

RNAV (GPS) PRM RWY 9R (SIMULTANEOUS CLOSE PARALLEL) HARTSFIELD-JACKSON ATLANTA INTL (ATL)

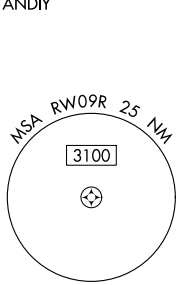
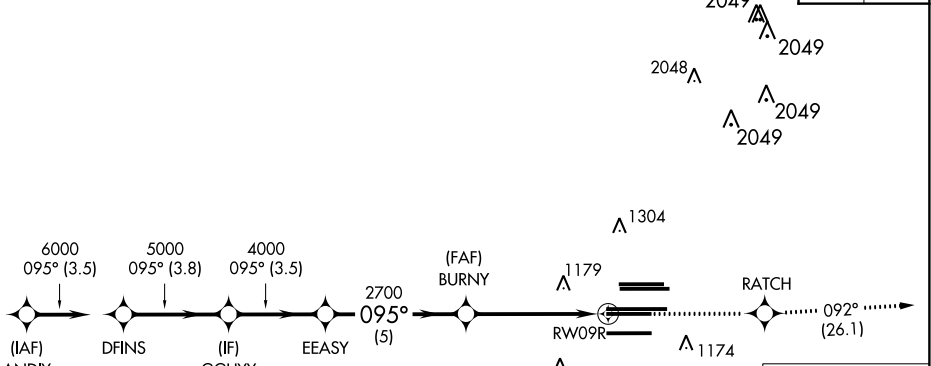
| | | |
|--|------------------------|---|
| WAAS CH 97400 W09B | APP CRS 095° | Rwy Idg 9000 TDZE 1026 Apt Elev 1026 |
|--|------------------------|---|

NA For uncompensated Baro-VNAV systems, LNAV/VNAV NA below -7°C (20°F) or above 54°C (130°F). DME/DME RNP-0.3 NA. Simultaneous close parallel approach authorized with ILS PRM and RNAV PRM Rwy 8L or 8R or 10, or Rwy 8L and 10, or Rwy 8R and 10. Dual VHF comm required. See additional requirements on AAUP. Use of FD or AP providing RNAV track guidance required during simultaneous operations.

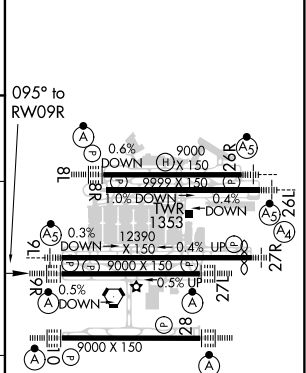
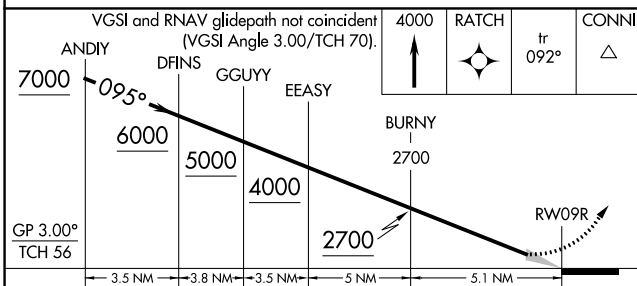
ALSf-2 MISSED APPROACH: Climb to 4000 direct RATCH and on track 092° to CONNI and hold.

| | | | |
|--|---------------------------------------|--|---|
| D-ATIS ARR 119.65 DEP 125.55 | ATLANTA APP CON 127.9 379.9 | ATLANTA TOWER 8L-26R 119.1 8R-26L 125.325 9L-27R 123.85 9R-27L 119.3 10-28 RWYS 119.5 254.4 PRM 132.55 | ALL RWYS (8L-26R,8R-26L) 121.9 (9L-27R,9R-27L) 121.75 10-28 RWYS 121.65 254.4 |
|--|---------------------------------------|--|---|

RADAR REQUIRED



| | |
|-----------|--------------------|
| ELEV 1026 | D TDZE 1026 |
|-----------|--------------------|



| CATEGORY | A | B | C | D |
|--------------|---|---------|-------------|---|
| LPV DA | | 1226/18 | 200 (200-½) | |
| LNAV/VNAV DA | | 1403/40 | 377 (400-¾) | |

HIRL all Rwy's
TDZ/CL Rwy's 8L, 9R, 10, 26R, 27L and 28

RNAV (GPS) PRM RWY 9R (SIMULTANEOUS CLOSE PARALLEL)

SE-4, 10 OCT 2019 to 07 NOV 2019

SE-4, 10 OCT 2019 to 07 NOV 2019