
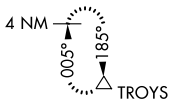


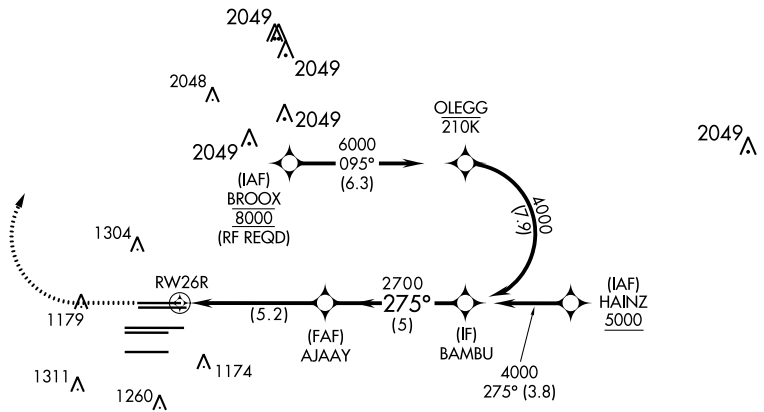
APP CRS	Rwy Idg	8800
275°	TDZE	990
	Apt Elev	1026

RNAV (RNP) Z RWY 26R
HARTSFIELD-JACKSON ATLANTA INTL (ATL)

<p>For uncompensated Baro-VNAV systems, procedure NA below -8°C (18°F) or above 54°C (130°F). GPS required. Simultaneous approach authorized. Arrival from BROOX NA during simultaneous triple approaches.</p>						<p>MALSR</p> 		<p>MISSED APPROACH: Climb to 1500 then climbing right turn to 3500 direct TROYS and hold.</p>	
D-ATIS	ATLANTA APP CON	ATLANTA TOWER				ALL RWYS	GND CON		ALL RWYS
ARR 119.65		8L-26R	8R-26L	9L-27R	9R-27L	10-28	(8L-26R,8R-26L)	(9L-27R,9R-27L)	10-28
DEP 125.55	127.9 379.9	119.1	125.325	123.85	119.3	119.5	254.4	121.9	121.75 121.65 254.4



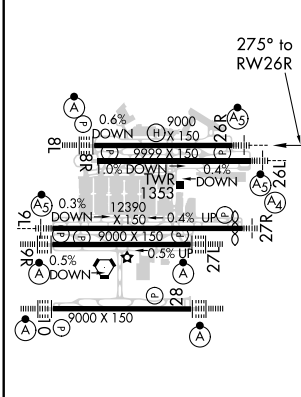
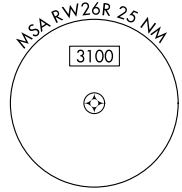
CLNC DEL	CPDLC
118.1	



SE-4, 10 OCT 2019 to 07 NOV 2019

SE-4, 10 OCT 2019 to 07 NOV 2019

ELEV 1026	D	TDZE 990
-----------	----------	----------



1500	3500	TROYS	VGSI and RNAV glidepath not coincident (VGSI Angle 3.00°/TCH 69°)	
RWY 26R		AJAAY 2700	BAMBU 4000	GP 3.00° TCH 55°
5.2 NM		5 NM		
CATEGORY	A	B	C	D
RNP 0.30 DA	1402/45		412 (400-1)	

HIRL all Rwy's
TDZ/ CL Rwy's 8L, 9R,
10, 26R, 27L and 28

ATLANTA, GEORGIA
Amdt 1 12OCT17

HARTSFIELD-JACKSON ATLANTA INTL (ATL)
33°38'N-84°26'W
RNAV (RNP) Z RWY 26R

AUTHORIZATION REQUIRED