

WAAS CH 61000 W26B	APP CRS 275°	Rwy Idg TDZE Apt Elev	8800 990 1026
--	------------------------	-----------------------------	--

RNAV (GPS) Y RWY 26R

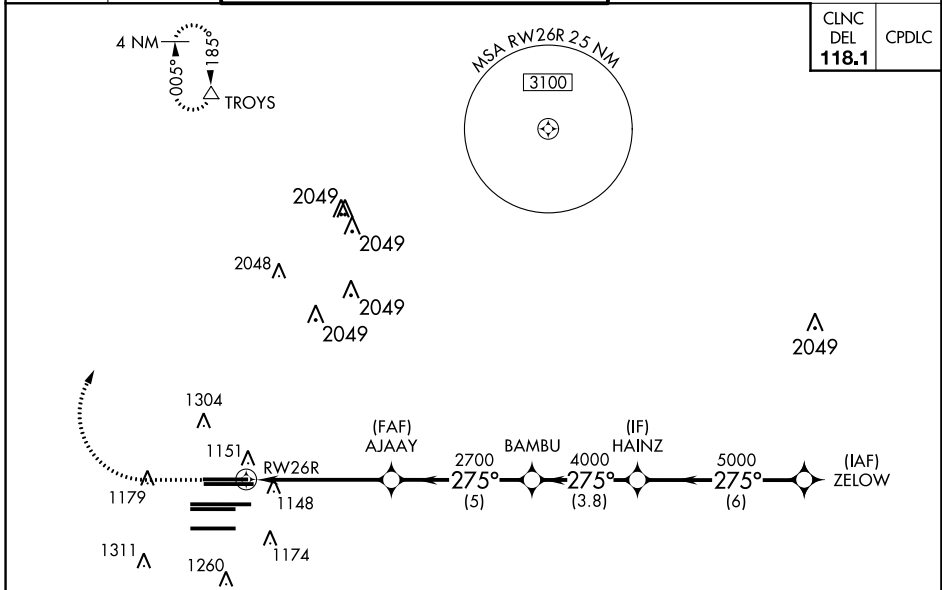
HARTSFIELD-JACKSON ATLANTA INTL (ATL)

▽ For uncompensated Baro-VNAV systems, LNAV/VNAV NA below -7°C (20°F) or above 54°C (130°F). DME/DME RNP-0.3 NA. Simultaneous approach authorized with Rwy 27R or 27L or 28, or Rwys 27R and 28. LNAV procedure NA during simultaneous operations. Use of FD or AP providing RNAV track guidance required during simultaneous operations.



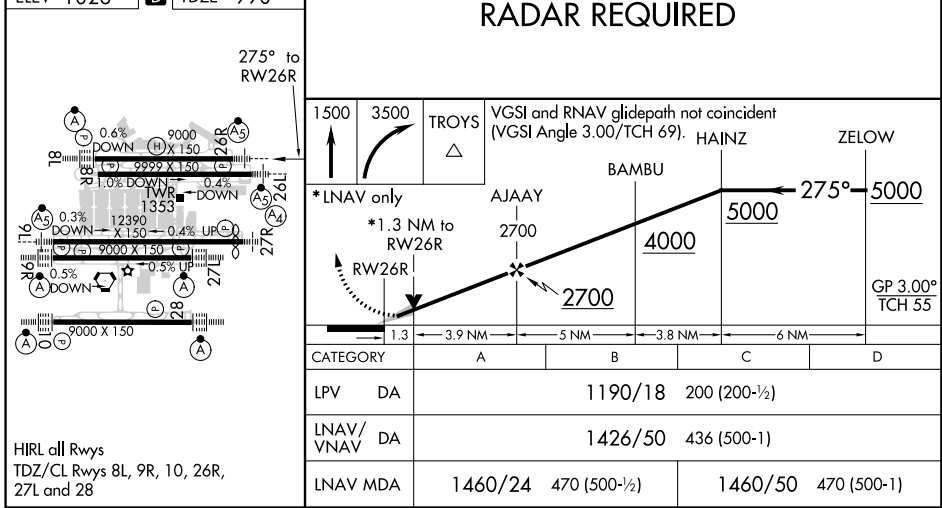
MISSED APPROACH:
Climb to 1500 then climbing right turn to 3500 direct TROYS and hold.

D-ATIS ARR 119.65	ATLANTA APP CON 127.9 379.9	ATLANTA TOWER 8L-26R 8R-26L 9L-27R 9R-27L 10-28 RWYS				ALL RWYS	GND CON (8L-26R,8R-26L) (9L-27R,9R-27L) 10-28 RWYS	ALL RWYS			
DEP 125.55	127.9 379.9	119.1	125.325	123.85	119.3	119.5	254.4	121.9	121.75	121.65	254.4



ELEV 1026	D	TDZE 990
-----------	----------	----------

RADAR REQUIRED



SE-4, 10 OCT 2019 to 07 NOV 2019

SE-4, 10 OCT 2019 to 07 NOV 2019