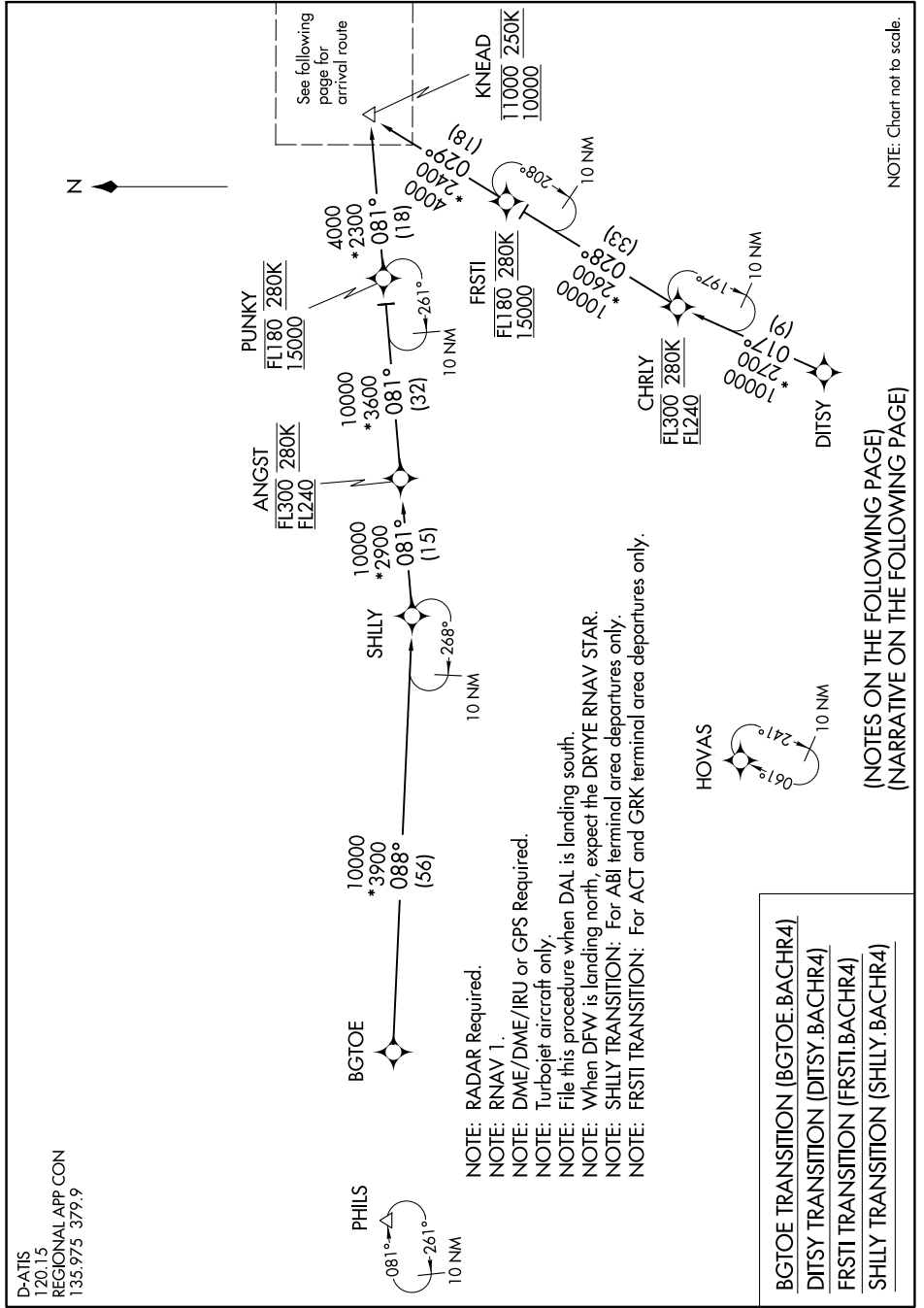


BACHR FOUR ARRIVAL (RNAV) Transition Routes

SC-2, 10 OCT 2019 to 07 NOV 2019

D-ATIS  
120.15  
REGIONAL APP CON  
135.975 379.9

BACHR FOUR ARRIVAL (RNAV) Transition Routes  
(KNEAD.BACHR4) 26MAY16



NOTE: Chart not to scale.

- NOTE: RADAR Required.
- NOTE: RNAV 1.
- NOTE: DME/DME/IRU or GPS Required.
- NOTE: Turboprop aircraft only.
- NOTE: File this procedure when DAL is landing south.
- NOTE: When DFW is landing north, expect the DRYE RNAV STAR.
- NOTE: SHILLY TRANSITION: For ABI terminal area departures only.
- NOTE: FRSTI TRANSITION: For ACT and GRK terminal area departures only.

- BGTOE TRANSITION (BGTOE.BACHR4)
- DITSY TRANSITION (DITSY.BACHR4)
- FRSTI TRANSITION (FRSTI.BACHR4)
- SHILLY TRANSITION (SHILLY.BACHR4)

(NOTES ON THE FOLLOWING PAGE)  
(NARRATIVE ON THE FOLLOWING PAGE)

SC-2, 10 OCT 2019 to 07 NOV 2019