

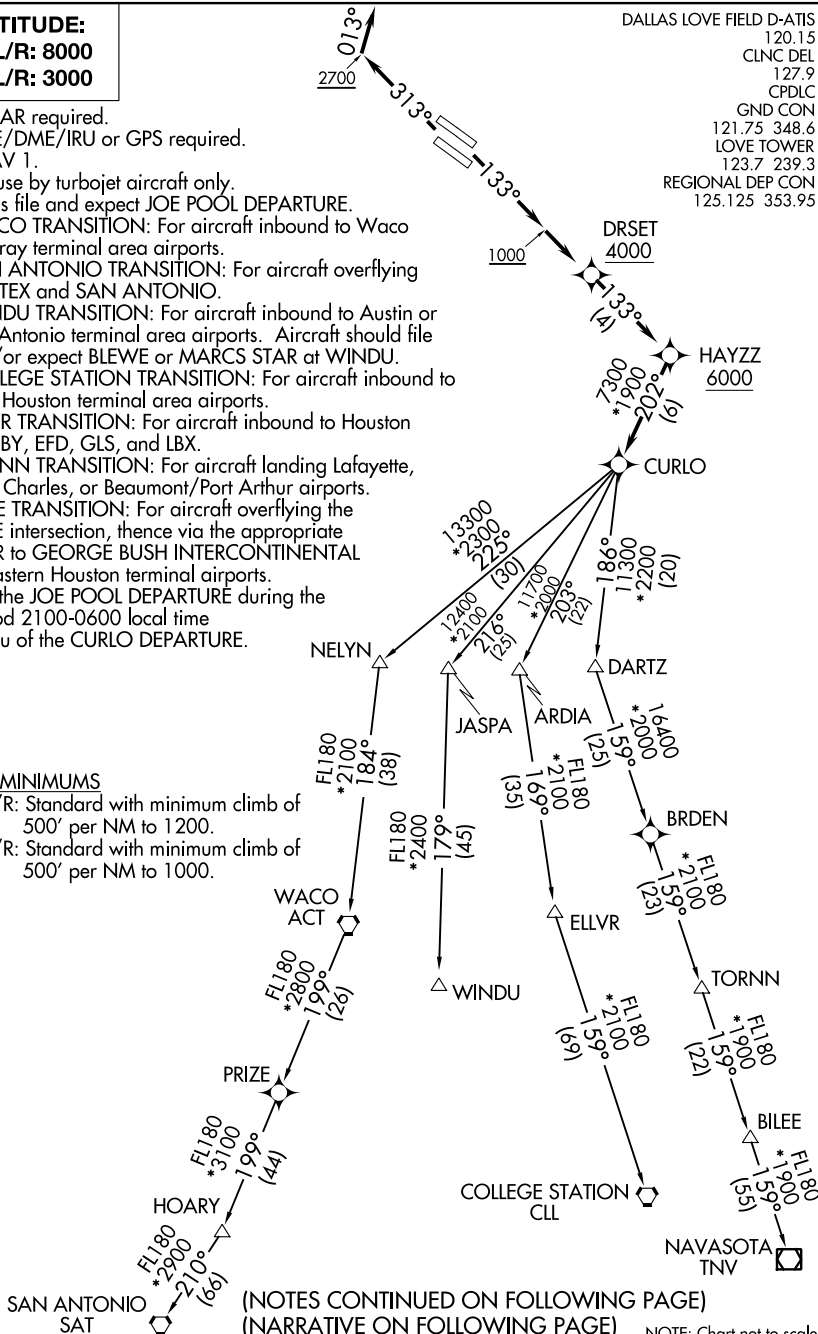
# CURLO FOUR DEPARTURE (RNAV)

DALLAS, TEXAS

**TOP ALTITUDE:**  
**RWY 13L/R: 8000**  
**RWY 31L/R: 3000**

- NOTE: RADAR required.
- NOTE: DME/DME/IRU or GPS required.
- NOTE: RNAV 1.
- NOTE: For use by turbojet aircraft only.
- NOTE: Props file and expect JOE POOL DEPARTURE.
- NOTE: WACO TRANSITION: For aircraft inbound to Waco or Gray terminal area airports.
- NOTE: SAN ANTONIO TRANSITION: For aircraft overflying CENTEX and SAN ANTONIO.
- NOTE: WINDU TRANSITION: For aircraft inbound to Austin or San Antonio terminal area airports. Aircraft should file and/or expect BLEWE or MARCS STAR at WINDU.
- NOTE: COLLEGE STATION TRANSITION: For aircraft inbound to west Houston terminal area airports.
- NOTE: ELLVR TRANSITION: For aircraft inbound to Houston HOBBY, EFD, GLS, and LBX.
- NOTE: TORNN TRANSITION: For aircraft landing Lafayette, Lake Charles, or Beaumont/Port Arthur airports.
- NOTE: BILEE TRANSITION: For aircraft overflying the BILEE intersection, thence via the appropriate STAR to GEORGE BUSH INTERCONTINENTAL or eastern Houston terminal airports.
- NOTE: Use the JOE POOL DEPARTURE during the period 2100-0600 local time in lieu of the CURLO DEPARTURE.

DALLAS LOVE FIELD D-ATIS  
 120.15  
 CLNC DEL  
 127.9  
 CPDLC  
 GND CON  
 121.75 348.6  
 LOVE TOWER  
 123.7 239.3  
 REGIONAL DEP CON  
 125.125 353.95



### TAKEOFF MINIMUMS

Rwys 13L/R: Standard with minimum climb of 500' per NM to 1200.  
 Rwys 31L/R: Standard with minimum climb of 500' per NM to 1000.

(NOTES CONTINUED ON FOLLOWING PAGE)  
 (NARRATIVE ON FOLLOWING PAGE)

NOTE: Chart not to scale.

SC-2, 10 OCT 2019 to 07 NOV 2019

SC-2, 10 OCT 2019 to 07 NOV 2019

# CURLO FOUR DEPARTURE (RNAV)

DALLAS, TEXAS

DALLAS LOVE FIELD (DAL)