

# ESNYE FOUR DEPARTURE (RNAV)

DALLAS, TEXAS

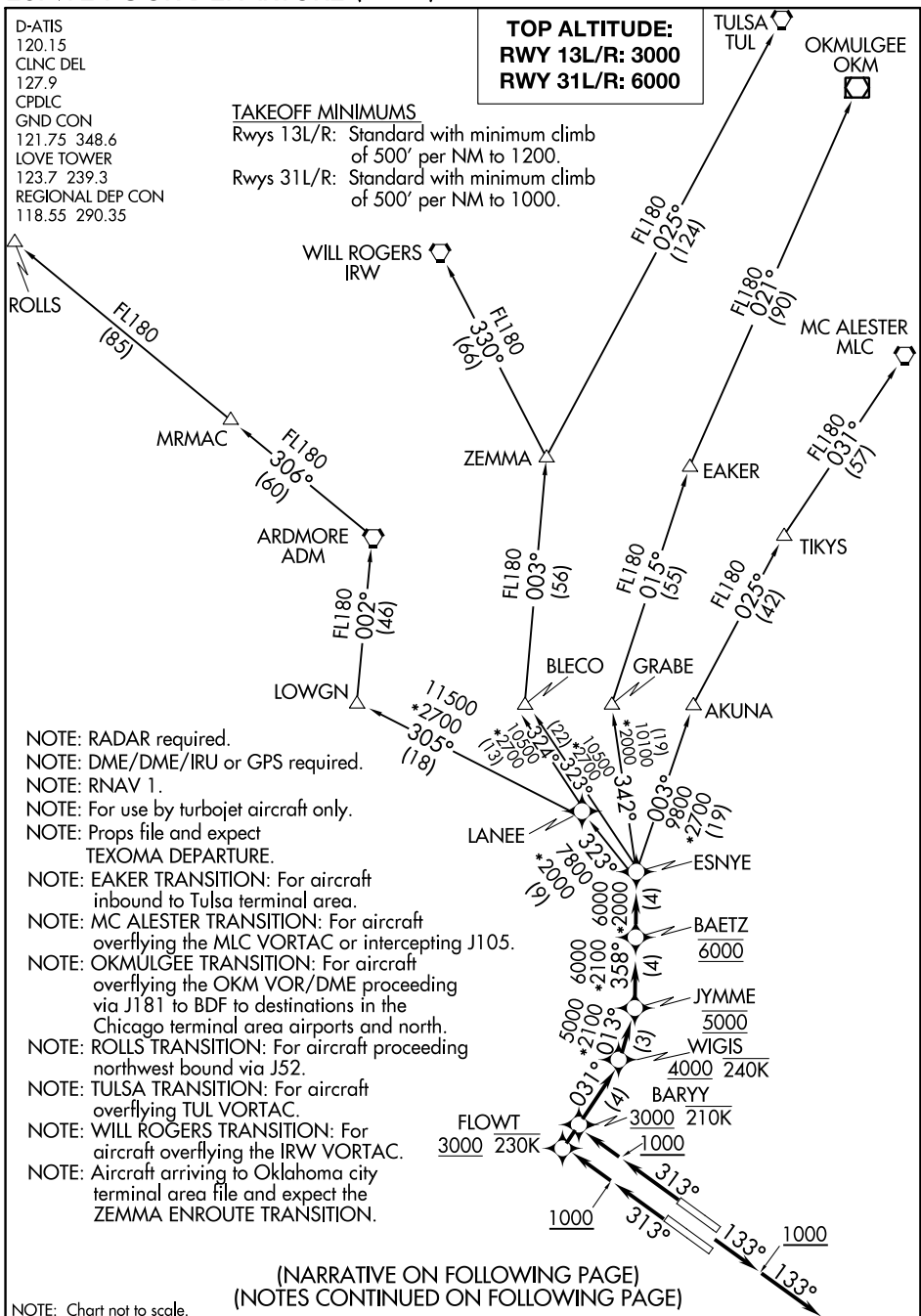
D-ATIS  
120.15  
CLNC DEL  
127.9  
CPDLC  
GND CON  
121.75 348.6  
LOVE TOWER  
123.7 239.3  
REGIONAL DEP CON  
118.55 290.35

**TOP ALTITUDE:**  
**RWY 13L/R: 3000**  
**RWY 31L/R: 6000**

### TAKEOFF MINIMUMS

Rwys 13L/R: Standard with minimum climb of 500' per NM to 1200.

Rwys 31L/R: Standard with minimum climb of 500' per NM to 1000.



- NOTE: RADAR required.
- NOTE: DME/DME/IRU or GPS required.
- NOTE: RNAV 1.
- NOTE: For use by turbojet aircraft only.
- NOTE: Props file and expect TEXOMA DEPARTURE.
- NOTE: EAKER TRANSITION: For aircraft inbound to Tulsa terminal area.
- NOTE: MC ALESTER TRANSITION: For aircraft overflying the MLC VORTAC or intercepting J105.
- NOTE: OKMULGEE TRANSITION: For aircraft overflying the OKM VOR/DME proceeding via J181 to BDF to destinations in the Chicago terminal area airports and north.
- NOTE: ROLLS TRANSITION: For aircraft proceeding northwest bound via J52.
- NOTE: TULSA TRANSITION: For aircraft overflying TUL VORTAC.
- NOTE: WILL ROGERS TRANSITION: For aircraft overflying the IRW VORTAC.
- NOTE: Aircraft arriving to Oklahoma city terminal area file and expect the ZEMMA ENROUTE TRANSITION.

(NARRATIVE ON FOLLOWING PAGE)  
(NOTES CONTINUED ON FOLLOWING PAGE)

NOTE: Chart not to scale.

SC-2, 10 OCT 2019 to 07 NOV 2019

SC-2, 10 OCT 2019 to 07 NOV 2019

# ESNYE FOUR DEPARTURE (RNAV)

(ESNYE4.ESNYE) 31MAR16

DALLAS, TEXAS

DALLAS LOVE FIELD (DAL)