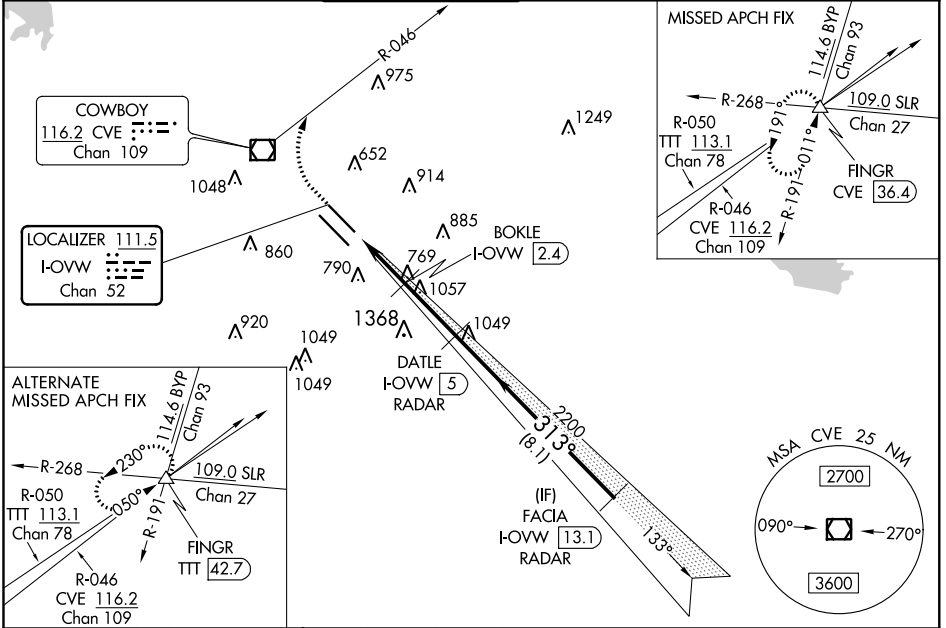


LOC/DME I-OVW 111.5 Chan 52	APP CRS 313°	Rwy Idg 6952 TDZE 487 Apt Elev 487
---	------------------------	---

ILS or LOC RWY 31R

DALLAS LOVE FIELD (DAL)

DME or RADAR required for LOC only. RADAR required for procedure entry.		MALSR	MISSED APPROACH: Climb to 1000 then climbing right turn to 5000 on heading 330° and CVE VOR/DME R-046 to FINGR INT/CVE 36.4 DME and hold.		
⚠ Simultaneous approach authorized. ** RVR 1800 authorized with use of FD or AP or HUD to DA.		AS			
D-ATIS 120.15	REGIONAL APP CON NORTH 124.3 282.275 SOUTH 125.2 343.65	LOVE TOWER 123.7 239.3	GND CON 121.75 348.6	CLNC DEL 127.9	CPDLC



ELEV 487	D	TDZE 487	1000	5000	CVE R-046	FINGR
			↑	hdg 330°	△	
			*LOC only.			
			BOKLE I-OVW (2.4) 2200 DATLE I-OVW (5) RADAR 2200 FACIA I-OVW (13.1) RADAR 2500 GS 3.00° TCH 55			
			I-OVW (0.2) 1.5 NM *I-OVW (1.3) 1.1 NM 1360* 2.6 NM 2200 8.1 NM			
			TDZE/CL Rwys 13L and 31L HIRL Rwys 13L-31R, and 13R-31L FAF to MAP 5.2 NM 313° 5.2 NM from FAF			
			CATEGORY A B C D S-ILS 31R ** 687/24 200 (200-½) S-LOC 31R 1360/24 873 (900-½) 1360-2 873 (900-2) CIRCLING 1360-1¼ 873 (900-1¼) 1360-2½ 873 (900-2½) 1520-3 1033 (1100-3) BOKLE FIX MINIMUMS (DME REQUIRED) S-LOC 31R 1020/24 533 (600-½) 1020/55 533 (600-1) CIRCLING 1020-1 533 (600-1) 1140-1 653 (700-1) 1220-2 733 (800-2) 1520-3 1033 (1100-3)			
			Knots 60 90 120 150 180 Min:Sec 5:12 3:28 2:36 2:05 1:44			

SC-2, 10 OCT 2019 to 07 NOV 2019

SC-2, 10 OCT 2019 to 07 NOV 2019