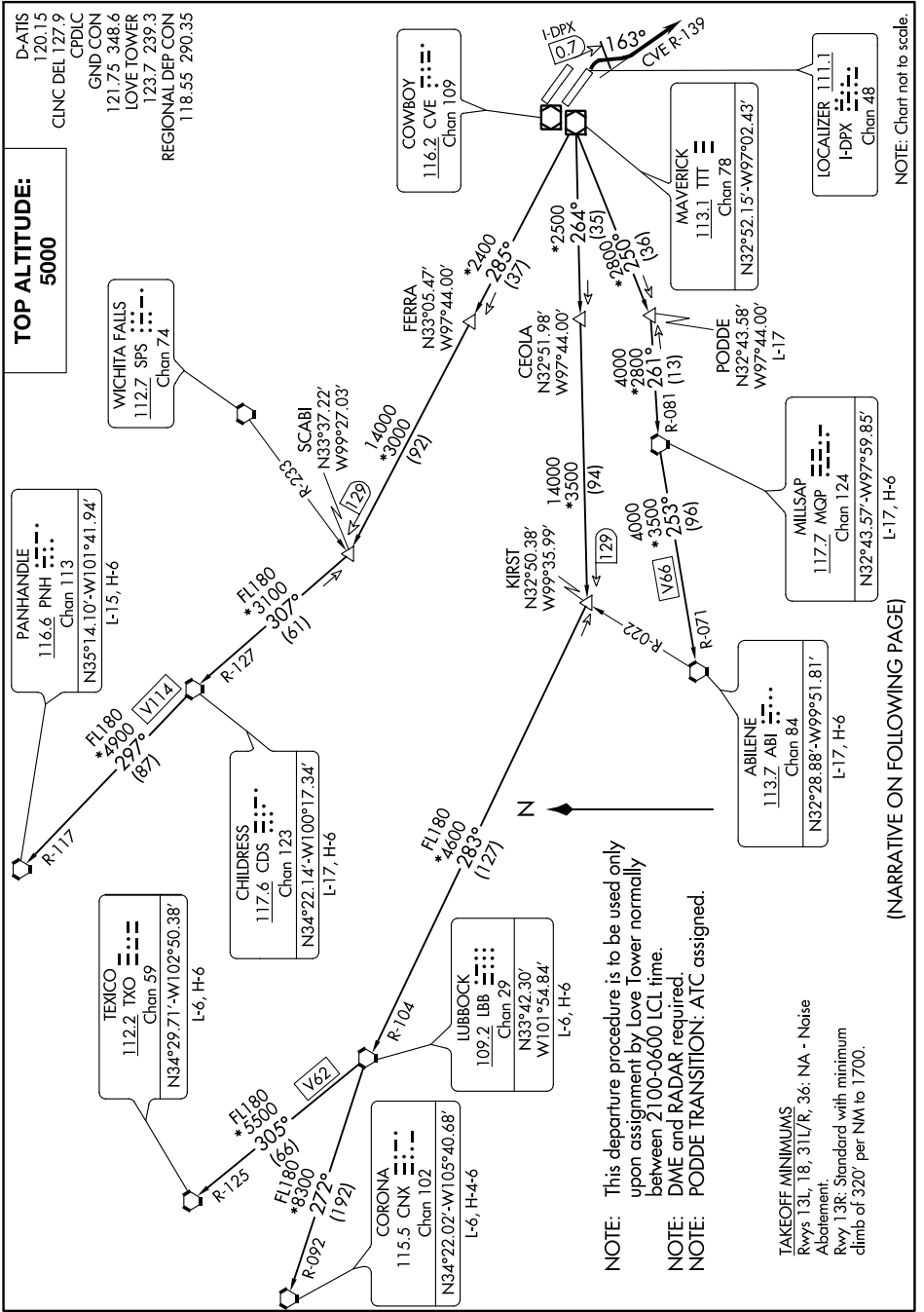


LOVE SIX DEPARTURE

SC-2. 10 OCT 2019 to 07 NOV 2019



NOTE: Chart not to scale.

(NARRATIVE ON FOLLOWING PAGE)

SC-2. 10 OCT 2019 to 07 NOV 2019

LOVE SIX DEPARTURE

**TAKEOFF MINIMUMS**  
 Rwy 13L, 18, 31L/R, 36: NA - Noise Abatement.  
 Rwy 13R: Standard with minimum climb of 320' per NM to 1700.

**NOTE:** This departure procedure is to be used only upon assignment by Love Tower normally between 2100-0600 LCL time.  
**NOTE:** DME and RADAR required.  
**NOTE:** PODDE TRANSITION: ATC assigned.