

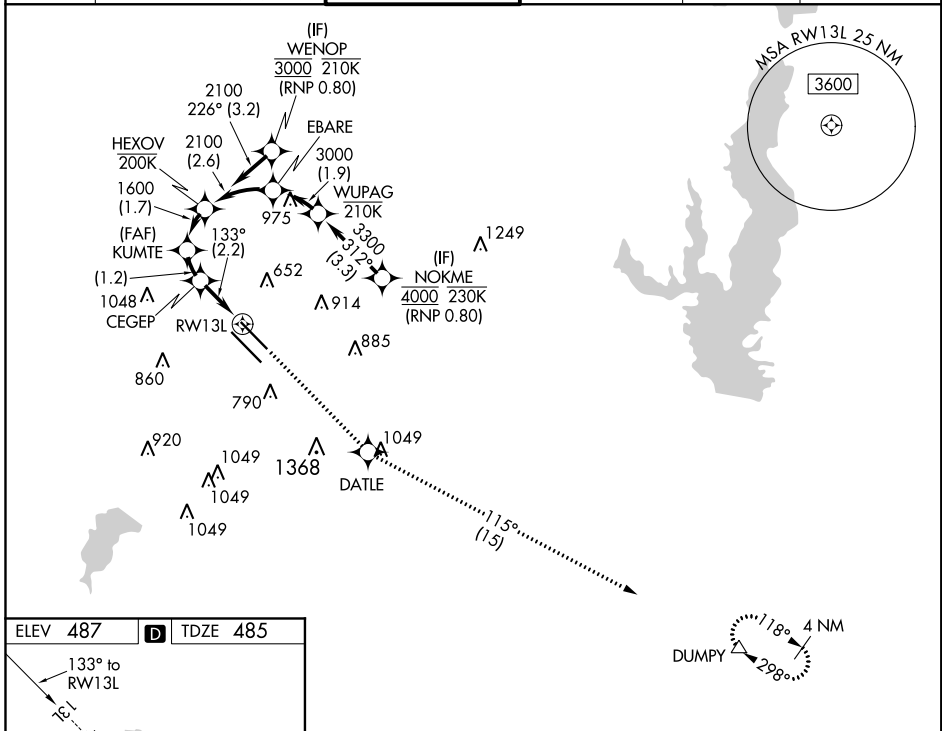
APP CRS	Rwly Idg	7352
133°	TDZE	485
	Apt Elev	487

RNAV (RNP) W RWY 13L

DALLAS LOVE FIELD (DAL)

RNP AR APCH. RF required.			MISSED APPROACH: Climb to 3000 direct DATLE and on track 115° to DUMPY and hold.
Simultaneous approach authorized. For uncompensated Baro-VNAV systems, procedure NA below -6°C or above 54°C. For inop ALS, increase RNP 0.11 all Cats visibility to RVR 4500.			

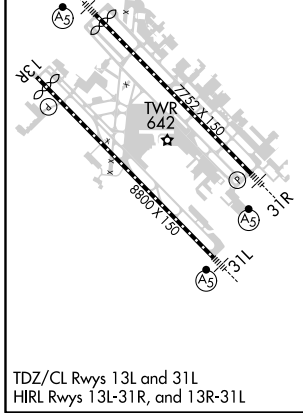
D-ATIS 120.15	REGIONAL APP CON NORTH 124.3 282.275 SOUTH 125.2 343.65	LOVE TOWER 123.7 239.3	GND CON 121.75 348.6	CLNC DEL 127.9	CPDLC
-------------------------	---	----------------------------------	--------------------------------	--------------------------	-------



SC-2, 10 OCT 2019 to 07 NOV 2019

SC-2, 10 OCT 2019 to 07 NOV 2019

ELEV 487	D	TDZE 485
-----------------	----------	-----------------



See planview for multiple IF locations.				3000	DATLE	tr 115°	DUMPY
HEXOV	KUMTE	CEGEP	RWY 13L	↑	✦	↖	△
2100	1600	1212					
GP 3.00°	1600	133°					
TCH 40	1.7 NM	1.2 NM	2.2 NM				
CATEGORY	A	B	C	D			
RNP 0.11 DA	754/24			269 (300-½)			
RNP 0.30 DA	846/40			361 (400-¾)			
AUTHORIZATION REQUIRED							

TDZ/CL Rwy 13L and 31L
HIRL Rwy 13L-31R, and 13R-31L

32°51'N-96°51'W

DALLAS LOVE FIELD (DAL) RNAV (RNP) W RWY 13L