

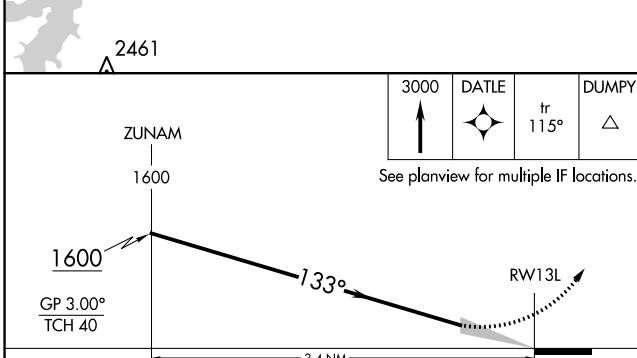
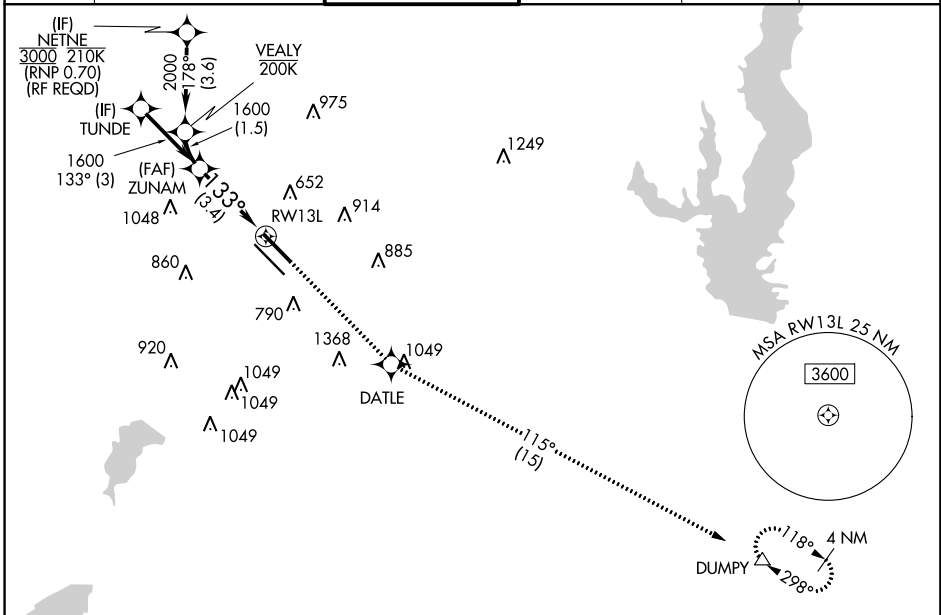
APP CRS 133°	Rwy Idg 7352 TDZE 485 Apt Elev 487
------------------------	---

RNAV (RNP) X RWY 13L

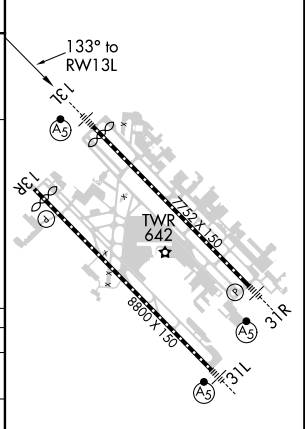
DALLAS LOVE FIELD (DAL)

RNP AR APCH.	MALS R 	MISSED APPROACH: Climb to 3000 direct DATLE and on track 115° to DUMPY and hold.
<p>▽ Simultaneous approach authorized. For uncompensated Baro-VNAV systems, procedure NA below -6°C or above 54°C. For inop ALS, increase RNP 0.11 all Cats visibility to RVR 4500.</p>		

D-ATIS 120.15	REGIONAL APP CON NORTH 124.3 282.275 SOUTH 125.2 343.65	LOVE TOWER 123.7 239.3	GND CON 121.75 348.6	CLNC DEL 127.9	CPDLC
-------------------------	---	----------------------------------	--------------------------------	--------------------------	-------



ELEV 487	D TDZE 485
----------	-------------------



CATEGORY	A	B	C	D
RNP 0.11 DA		754/24	269 (300-½)	
RNP 0.30 DA		846/40	361 (400-¾)	

AUTHORIZATION REQUIRED

TDZ/CL Rwys 13L and 31L
HIRL Rwys 13L-31R, and 13R-31L

SC-2, 10 OCT 2019 to 07 NOV 2019

SC-2, 10 OCT 2019 to 07 NOV 2019