

APP CRS	Rwy Idg	8310
133°	TDZE	478
	Apt Elev	487

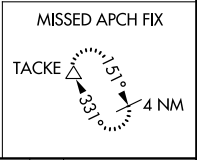
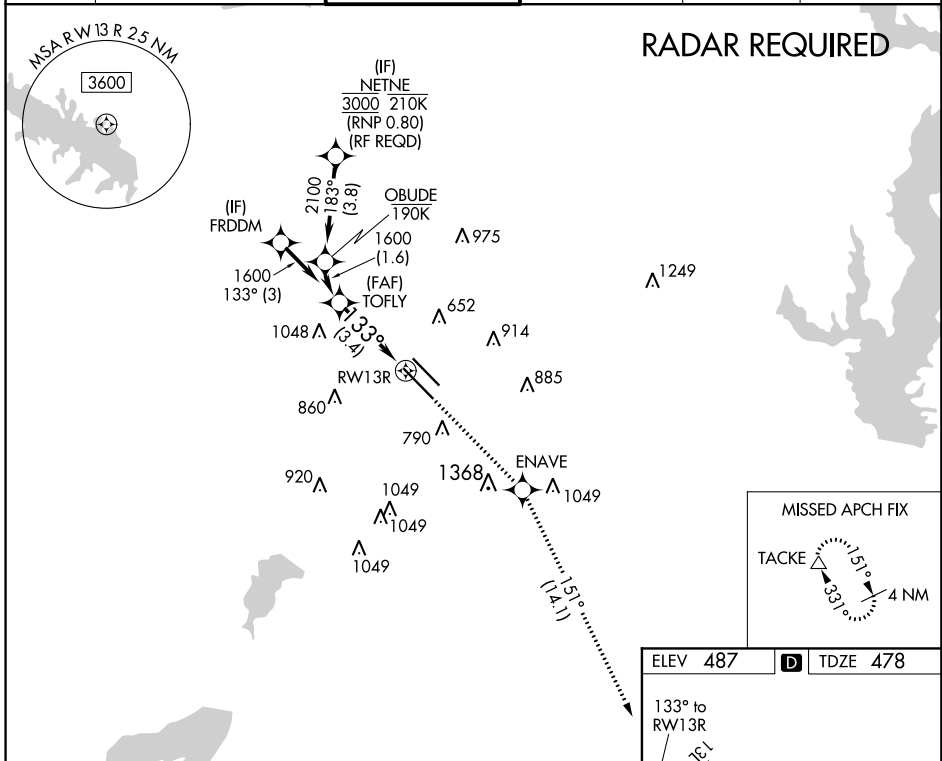
RNAV (RNP) X RWY 13R

DALLAS LOVE FIELD (DAL)

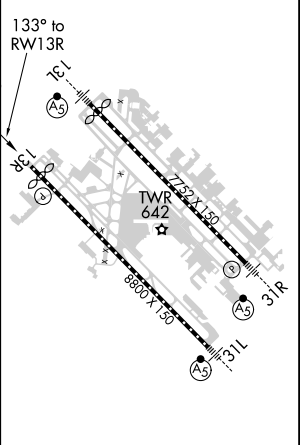
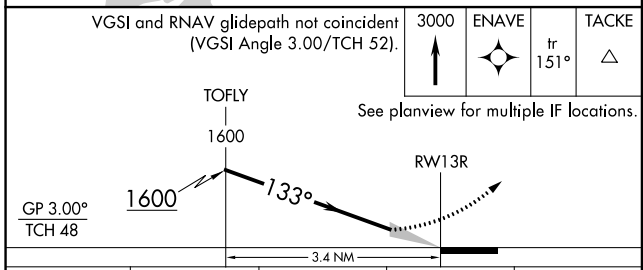
▼ For uncompensated Baro-VNAV systems, procedure NA below -5°C (23°F) or above 54°C (130°F). Simultaneous approach authorized. GPS required. Use of FD or AP providing RNAV track guidance required during simultaneous operations.

MISSED APPROACH: Climb to 3000 direct ENAVE and on track 151° to TACKE and hold.

D-ATIS 120.15	REGIONAL APP CON NORTH 124.3 282.275 SOUTH 125.2 343.65	LOVE TOWER 123.7 239.3	GND CON 121.75 348.6	CLNC DEL 127.9	CPDLC
-------------------------	---	----------------------------------	--------------------------------	--------------------------	-------



ELEV 487	D TDZE 478
----------	-------------------



CATEGORY	A	B	C	D
RNP 0.20 DA		781/50	303 (300-1)	
RNP 0.25 DA		833/60	355 (400-1½)	
RNP 0.30 DA		929-1½	451 (500-1½)	

AUTHORIZATION REQUIRED

TDZ/CL Rwy 13L and 31L
HIRL Rwy 13L-31R, and 13R-31L

SC-2, 10 OCT 2019 to 07 NOV 2019

SC-2, 10 OCT 2019 to 07 NOV 2019