

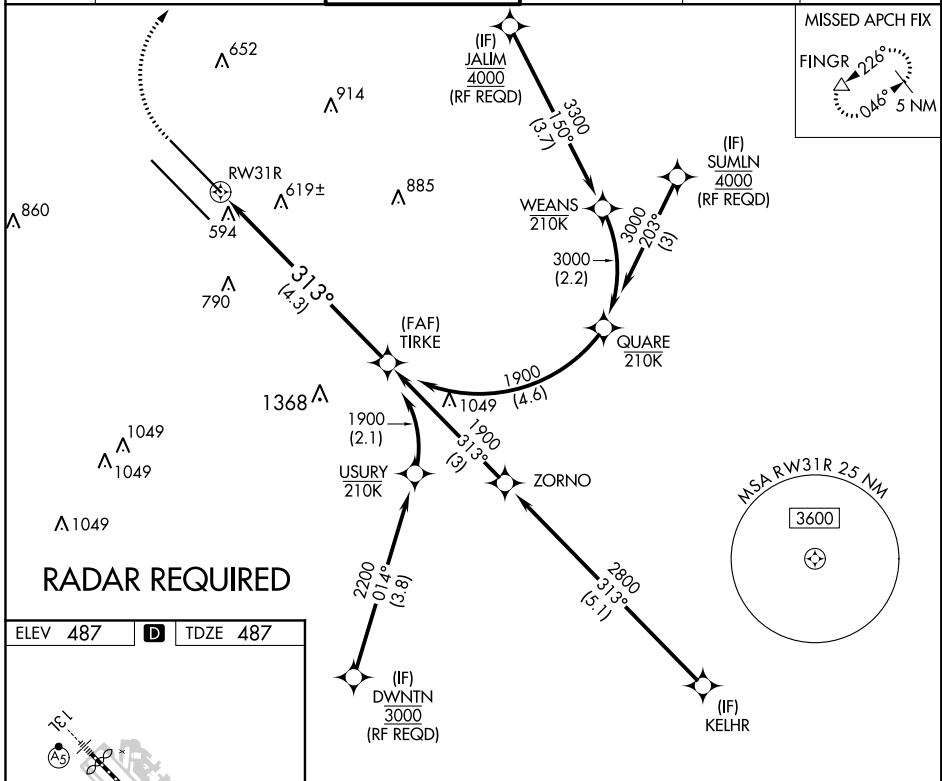
RNAV (RNP) Z RWY 31R

DALLAS LOVE FIELD (DAL)

APP CRS 313°	Rwy Idg 6952
	TDZE 487
	Apt Elev 487

RNP AR APCH.	MALSR 	MISSED APPROACH: Climb to 900 then climbing right turn to 5000 direct FINGR and hold.
<p>▼ For uncompensated Baro-VNAV systems, procedure NA below -5°C (23°F) or above 54°C (130°F). Use of FD or AP providing RNAV track guidance required during simultaneous operations. Simultaneous approach authorized.</p>		

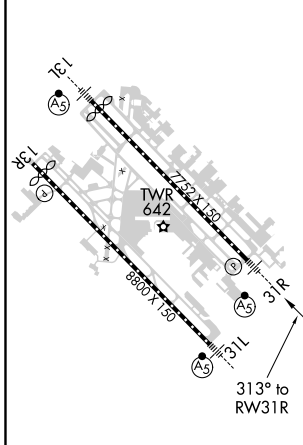
D-ATIS 120.15	REGIONAL APP CON NORTH 124.3 282.275 SOUTH 125.2 343.65	LOVE TOWER 123.7 239.3	GND CON 121.75 348.6	CLNC DEL 127.9	CPDLC
-------------------------	---	----------------------------------	--------------------------------	--------------------------	-------



SC-2, 10 OCT 2019 to 07 NOV 2019

SC-2, 10 OCT 2019 to 07 NOV 2019

ELEV 487	D	TDZE 487
----------	----------	----------



TDZ/CL Rwy 13L and 31L
HIRL Rwy 13L-31R, and 13R-31L

900	5000	FINGR	VGSI and RNAV glidepath not coincident (VGSI Angle 3.00/TCH 55).
See planview for multiple IF locations.			
RWY 31R		TIRKE 1900	
313°		1900	
4.3 NM		GP 3.00° TCH 49	

CATEGORY	A	B	C	D
RNP 0.16 DA		796/24	309 (400-½)	
RNP 0.30 DA		895/45	408 (500-¾)	

AUTHORIZATION REQUIRED