

# RNAV (GPS) Y RWY 31L

DALLAS LOVE FIELD (DAL)

WAAS CH <b>72808</b> W31A	APP CRS <b>313°</b>	Rwy Idg TDZE <b>477</b> Apt Elev <b>487</b>
---------------------------------	------------------------	---

**RNP APCH.**

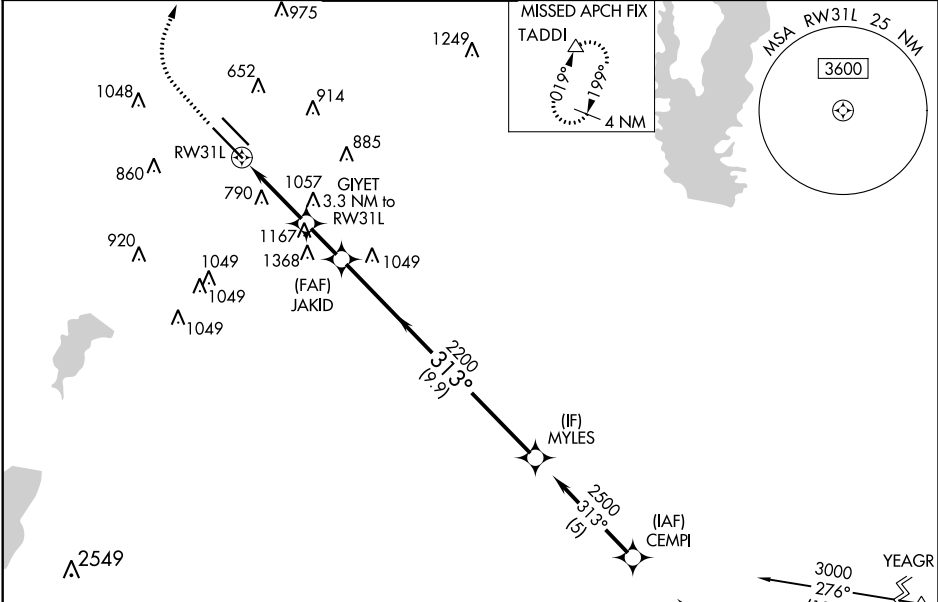
Simultaneous approach authorized. Use of FD or AP providing RNAV track guidance required during simultaneous operations. LNAV procedure NA during simultaneous operations. For inop ALS, increase LPV all Cats visibility to RVR 4500.

**MALSR**

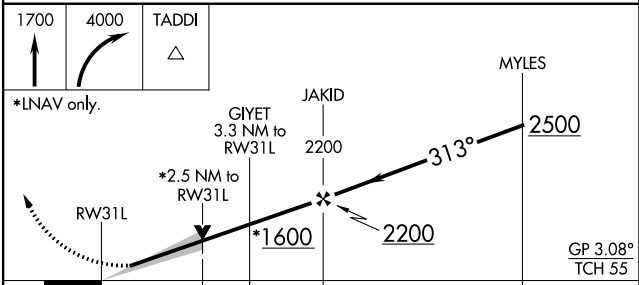
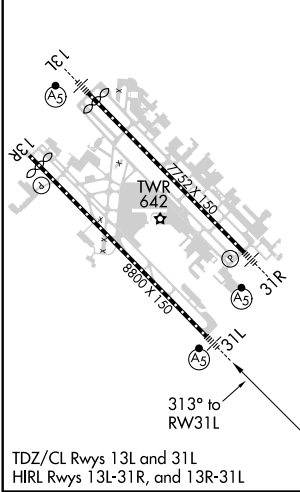


**MISSED APPROACH:** Climb to 1700 then climbing right turn to 4000 direct TADDI and hold.

D-ATIS <b>120.15</b>	REGIONAL APP CON NORTH <b>124.3 282.275</b> SOUTH <b>125.2 343.65</b>	LOVE TOWER <b>123.7 239.3</b>	GND CON <b>121.75 348.6</b>	CLNC DEL <b>127.9</b>	CPDLC
-------------------------	---	----------------------------------	--------------------------------	--------------------------	-------



ELEV 487	<b>D</b>	TDZE 477
----------	----------	----------



CATEGORY	A	B	C	D
LPV DA	770/22		293 (300-1/2)	
LNAV MDA	1360/40	883 (900-3/4)	1360-2	883 (900-2)
<b>C</b> CIRCLING	1360-1/4	873 (900-1/4)	1360-2 1/2 873 (900-2 1/2)	1520-3 1033 (1100-3)

SC-2, 10 OCT 2019 to 07 NOV 2019

SC-2, 10 OCT 2019 to 07 NOV 2019