

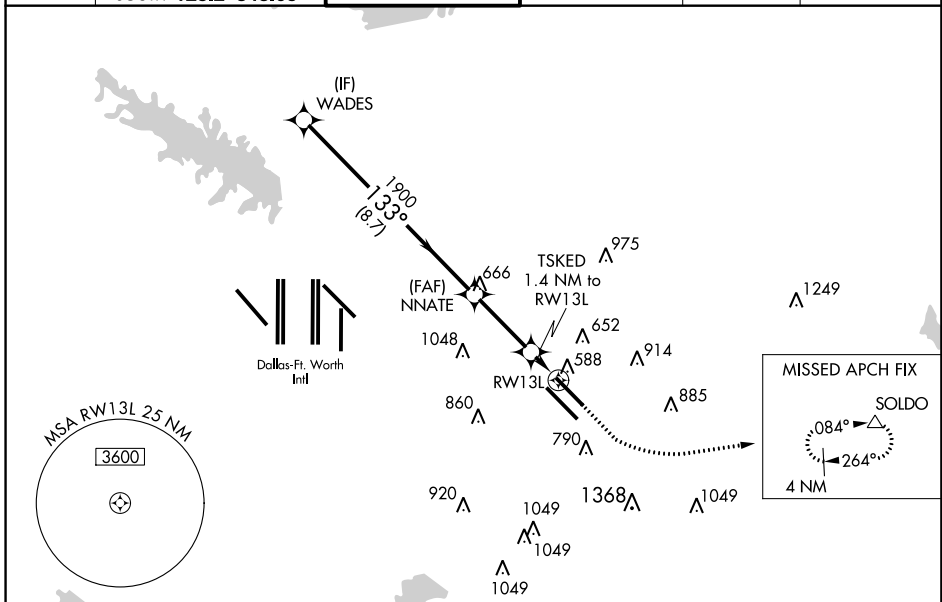
WAAS CH 99723 W13B	APP CRS 133°	Rwy ldg 7352 TDZE 485 Apt Elev 487
--	------------------------	---

RNAV (GPS) Z RWY 13L

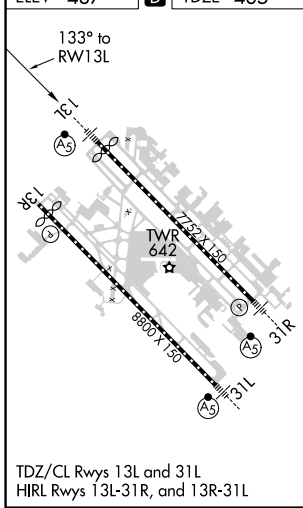
DALLAS LOVE FIELD (D.A.L.)

RNP APCH.	MALS R	MISSED APPROACH: Climb to 1000 then climbing left turn to 3000 direct SOLDO and hold.
<p>Simultaneous approach authorized. Use of FD or AP required during simultaneous operations.</p> <p>LNAV procedure NA during simultaneous operations. For uncompensated Baro-VNAV systems, procedure NA below -6°C or above 54°C. For inop ALS, increase LNAV/VNAV all Cats visibility to RVR 4500 and LNAV Cats C/D visibility to RVR 5500.</p>		

D-ATIS 120.15	REGIONAL APP CON NORTH 124.3 282.275 SOUTH 125.2 343.65	LOVE TOWER 123.7 239.3	GND CON 121.75 348.6	CLNC DEL 127.9	CPDLC
-------------------------	---	----------------------------------	--------------------------------	--------------------------	-------



ELEV 487	D	TDZE 485
-----------------	----------	-----------------



WADES 2500 GP 3.00° TCH 55	133°		1000	3000	SOLDO
	1900	1900	*980		*LNAV only.
	8.7 NM	2.9 NM	1.4 NM		
CATEGORY	A	B	C	D	
LPV DA		685/18	200 (200-½)		
LNAV/VNAV DA		764/24	279 (300-½)		
LNAV MDA	840/24	355 (400-½)	840/30	355 (400-¾)	
C CIRCLING	1000-1 513 (600-1)	1140-1 653 (700-1)	1220-2 733 (800-2)	1520-3 1033 (1100-3)	