

SNSSET FOUR DEPARTURE (RNAV)

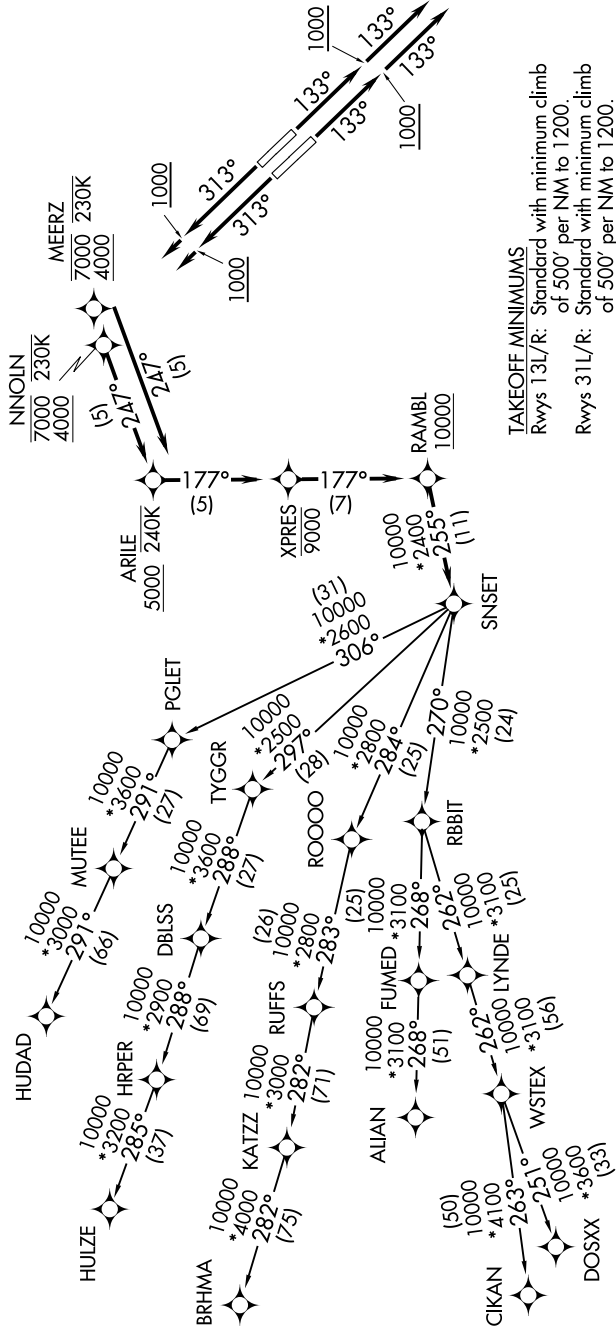
SC-2, 10 OCT 2019 to 07 NOV 2019

D-ATIS 120.15
 CLNC DEL 127.9
 CPDLC
 GND CON 121.75 348.6
 LOVE TOWER 123.7 239.3
 REGIONAL DEP CON 126.475 363.15



TOP ALTITUDE:
RWYS 13L/R: 3000
RWYS 31L/R: 10000

NOTE: RADAR required.
 NOTE: DME/DME/IRU or GPS required.
 NOTE: RNAV 1.
 NOTE: For use by turbojet aircraft only.
 NOTE: RNAV-capable props: File and expect the SWABR RNAV SID.
 NOTE: ALIAN TRANSITION: ATC assigned only.
 NOTE: Aircraft landing in Lubbock terminal area file the BRHMA enroute transition.



TAKEOFF MINIMUMS
 Rwy 13L/R: Standard with minimum climb of 500' per NM to 1200.
 Rwy 31L/R: Standard with minimum climb of 500' per NM to 1200.

(NARRATIVE ON FOLLOWING PAGE)
 (NOTES CONTINUED ON FOLLOWING PAGE)

NOTE: Chart not to scale.

SC-2, 10 OCT 2019 to 07 NOV 2019

SNSSET FOUR DEPARTURE (RNAV)