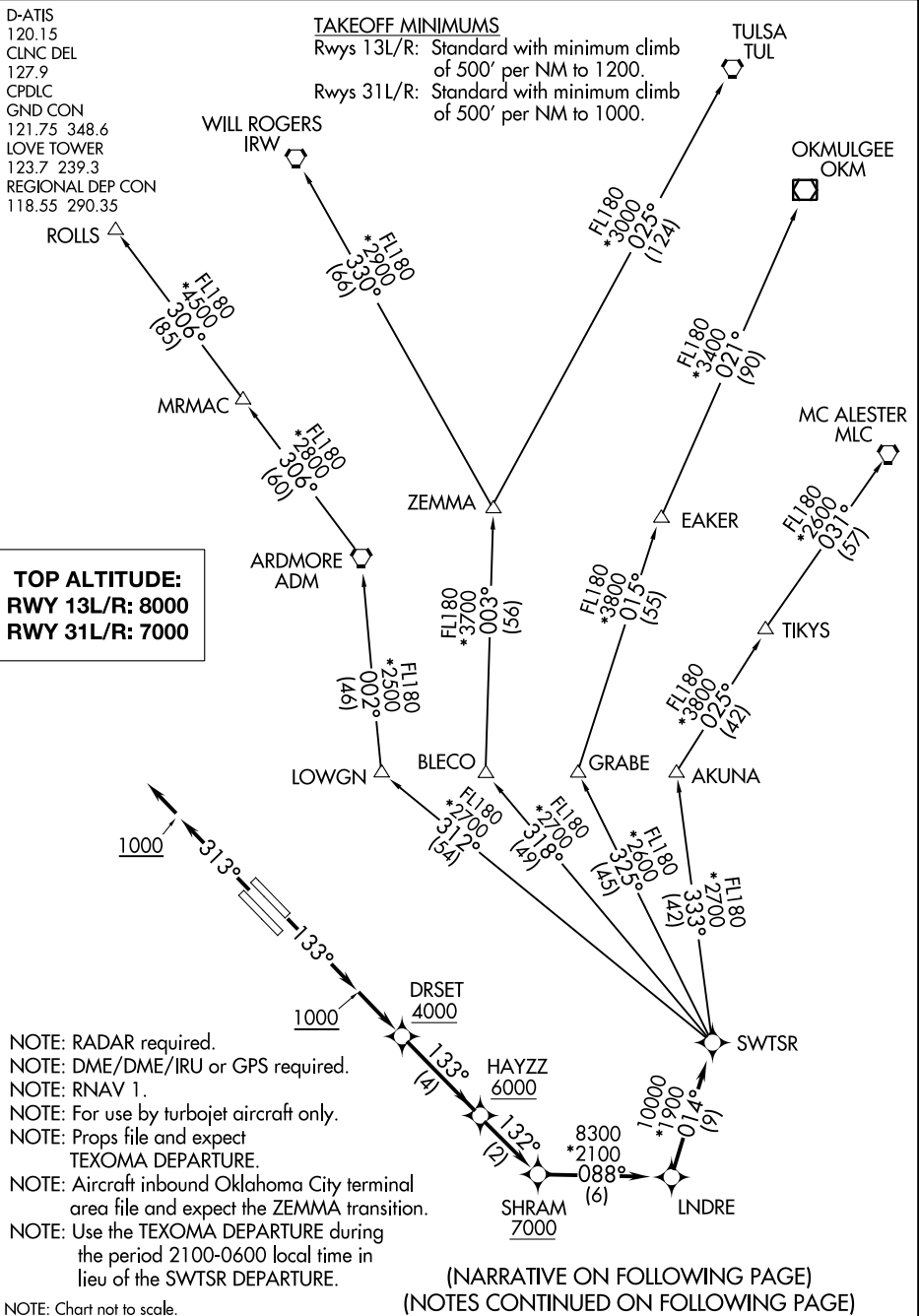


SWTSR THREE DEPARTURE (RNAV)

D-ATIS
120.15
CLNC DEL
127.9
CPDLC
GND CON
121.75 348.6
LOVE TOWER
123.7 239.3
REGIONAL DEP CON
118.55 290.35

TAKEOFF MINIMUMS

Rwys 13L/R: Standard with minimum climb of 500' per NM to 1200.
Rwys 31L/R: Standard with minimum climb of 500' per NM to 1000.



TOP ALTITUDE:
RWY 13L/R: 8000
RWY 31L/R: 7000

NOTE: RADAR required.
NOTE: DME/DME/IRU or GPS required.
NOTE: RNAV 1.
NOTE: For use by turbojet aircraft only.
NOTE: Props file and expect TEXOMA DEPARTURE.
NOTE: Aircraft inbound Oklahoma City terminal area file and expect the ZEMMA transition.
NOTE: Use the TEXOMA DEPARTURE during the period 2100-0600 local time in lieu of the SWTSR DEPARTURE.

(NARRATIVE ON FOLLOWING PAGE)
(NOTES CONTINUED ON FOLLOWING PAGE)

NOTE: Chart not to scale.

SC-2, 10 OCT 2019 to 07 NOV 2019

SC-2, 10 OCT 2019 to 07 NOV 2019

SWTSR THREE DEPARTURE (RNAV)