

# VENUS THREE DEPARTURE

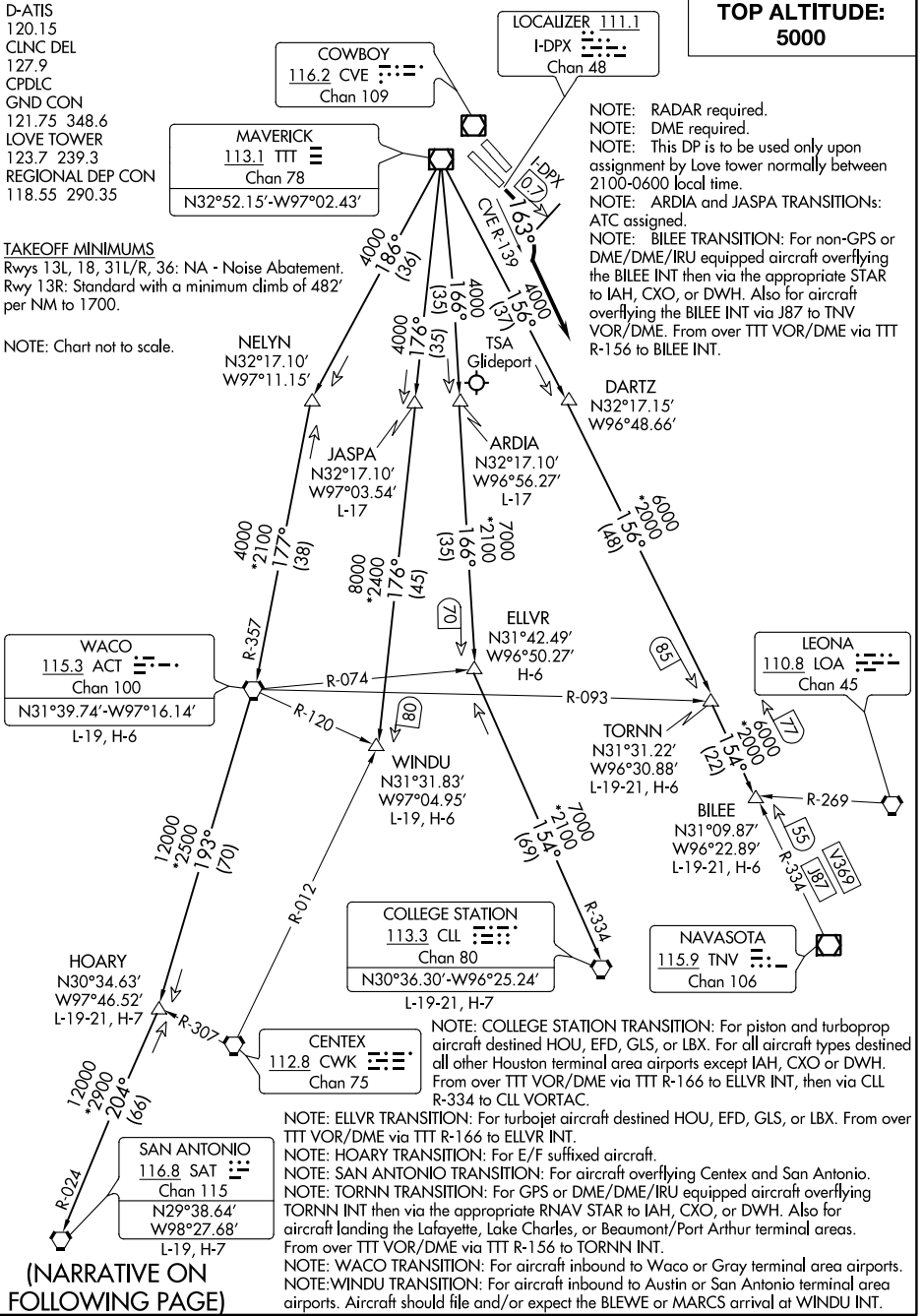
**TOP ALTITUDE:  
5000**

D-ATIS  
120.15  
CLNC DEL  
127.9  
CPDLC  
GND CON  
121.75 348.6  
LOVE TOWER  
123.7 239.3  
REGIONAL DEP CON  
118.55 290.35

### TAKEOFF MINIMUMS

Rwys 13L, 18, 31L/R, 36: NA - Noise Abatement.  
Rwy 13R: Standard with a minimum climb of 482' per NM to 1700.

NOTE: Chart not to scale.



SC-2, 10 OCT 2019 to 07 NOV 2019

SC-2, 10 OCT 2019 to 07 NOV 2019

# VENUS THREE DEPARTURE