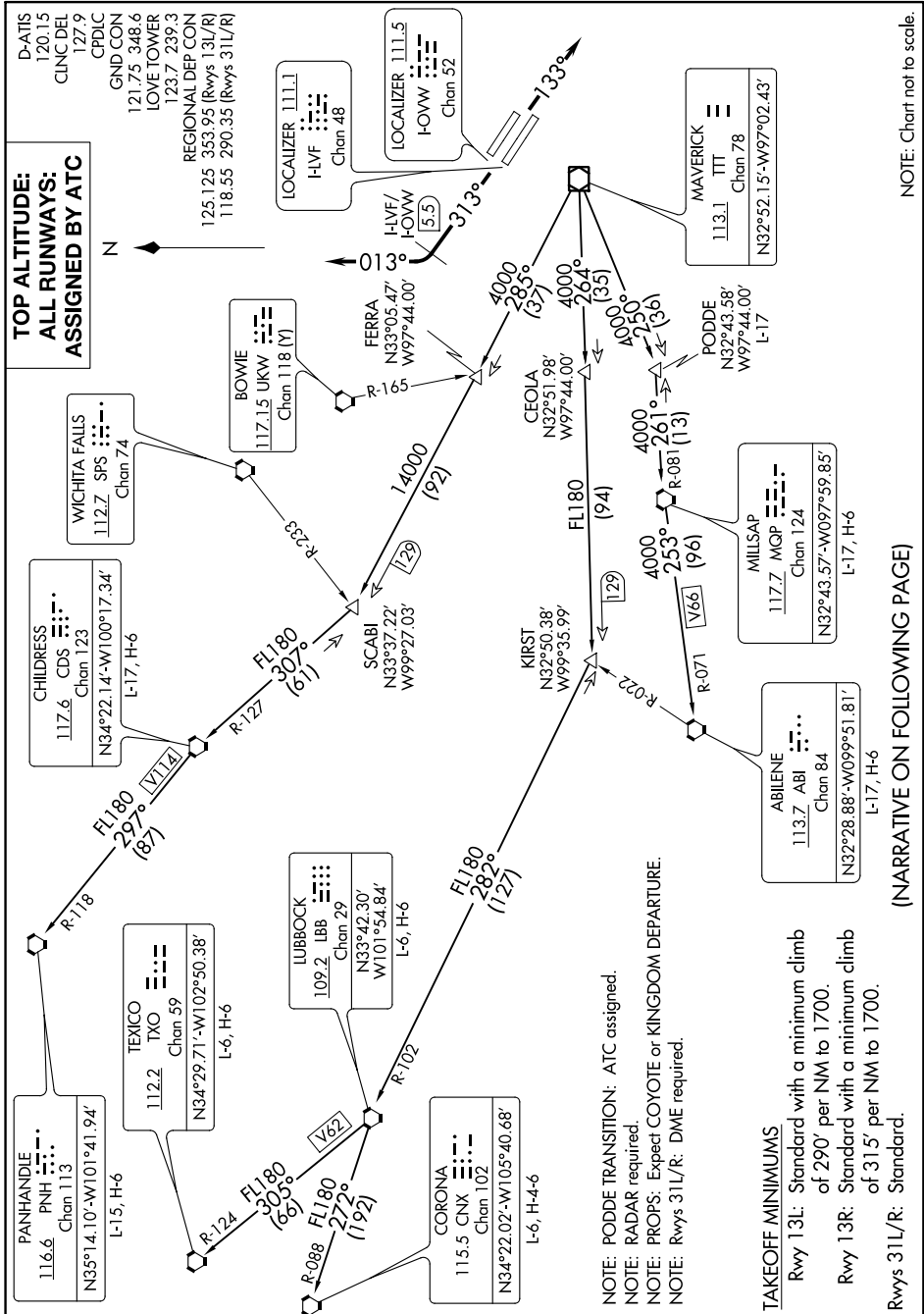


WORTH TWO DEPARTURE

SC-2, 10 OCT 2019 to 07 NOV 2019



NOTE: Chart not to scale.

(NARRATIVE ON FOLLOWING PAGE)

SC-2, 10 OCT 2019 to 07 NOV 2019

WORTH TWO DEPARTURE

NOTE: PODDE TRANSITION: ATC assigned.
 NOTE: RADAR required.
 NOTE: PROPS: Expect COYOTE or KINGDOM DEPARTURE.
 NOTE: Rwy 31L/R: DME required.

TAKEOFF MINIMUMS

- Rwy 13L: Standard with a minimum climb of 290' per NM to 1700.
- Rwy 13R: Standard with a minimum climb of 315' per NM to 1700.
- Rwys 31L/R: Standard.

NOTE: Chart not to scale.