

LOC/DME I-SXH 108.95 Chan 26(Y)	APP CRS 093°	Rwy Idg 10540 TDZE 669 Apt Elev 680
--	------------------------	--

ILS RWY 10C (CAT II & III)

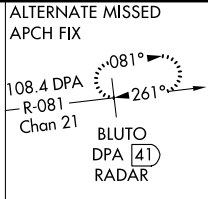
CHICAGO O'HARE INTL (ORD)

From GIBNS: RNAV-1 GPS required.
 RNAV 1-GPS or RADAR required for procedure entry. DME or RADAR required.
 Simultaneous approach authorized. CAT II: RVR 1000 authorized with specific OPSPEC, MSPEC, or LOA approval and use of autoland or HUD to touchdown.

ALSF-2
 MISSED APPROACH: Climb to 4000 on heading 093° and CGT VORTAC R-336 to CGT VORTAC and hold.

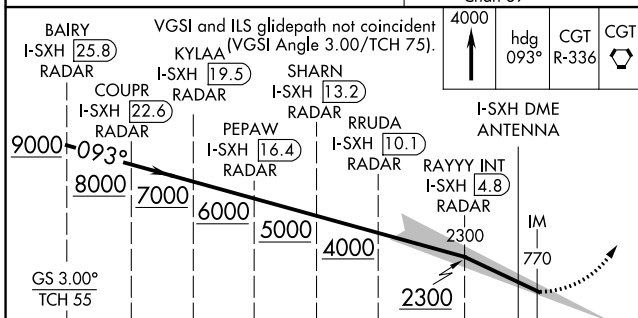
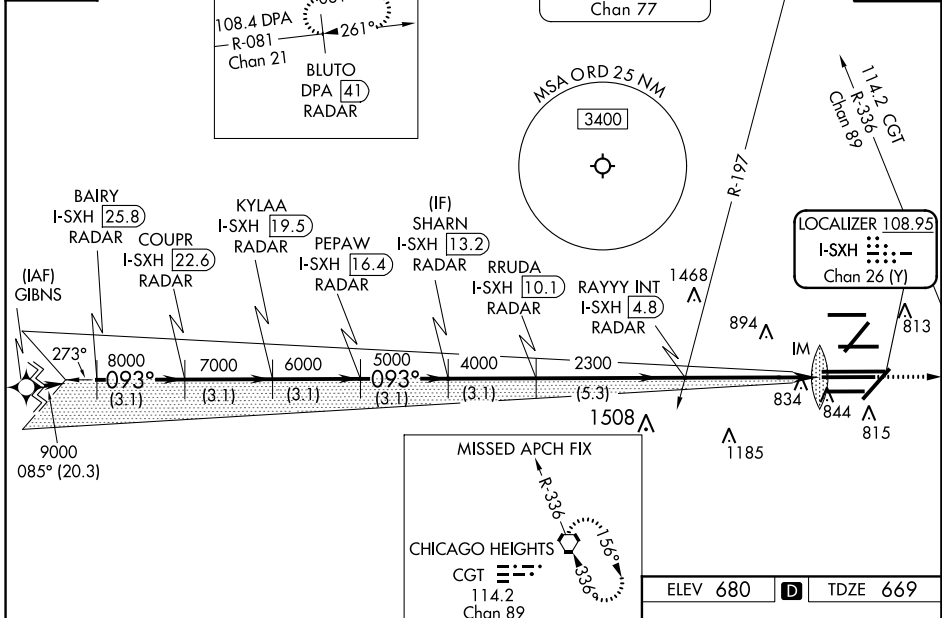
CHICAGO APP CON 119.0 292.125	O'HARE TOWERS 128.15 348.0 (Rwy 9L/27R) 133.0 348.0 (10R/28L) 120.75 121.15 126.9 132.7 348.0 (CENTER)	GND CON (TWR NORTH) 124.125 (TWR SOUTH) 118.05 (ALL TWRs) 226.675	(TWR CENTER) 121.75 (OBND) (IBND) 121.9	CLNC DEL 121.6
---	---	--	--	--------------------------

D-ATIS
135.4
282.225



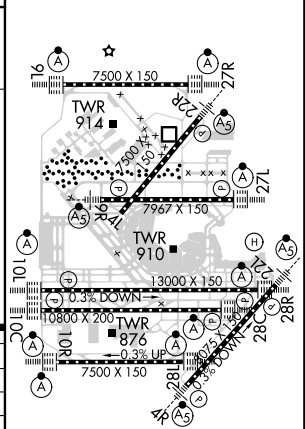
NORTHBROOK
113.0 OBK
Chan 77

CPDLC



ELEV 680	D	TDZE 669
----------	----------	----------

BAIRY I-SXH (25.8) RADAR	COUPR I-SXH (22.6) RADAR	KYLAA I-SXH (19.5) RADAR	PEPAW I-SXH (16.4) RADAR	SHARN I-SXH (13.2) RADAR	RRUDA I-SXH (10.1) RADAR	RAYYY INT I-SXH (4.8) RADAR	I-SXH DME ANTENNA
3.1 NM	3.1 NM	3.1 NM	3.1 NM	3.1 NM	5.3 NM	5 NM	1091'
CATEGORY A		CATEGORY B		CATEGORY C		CATEGORY D	
S-ILS 10C CAT II RA 102/12 100 DA 769				S-ILS 10C CAT III RVR 06			



CATEGORY II and III ILS - SPECIAL AIRCREW & AIRCRAFT CERTIFICATION REQUIRED

HIRL all Rwys
 TDZ/CL all Rwys except 4L

EC-3, 10 OCT 2019 to 07 NOV 2019

EC-3, 10 OCT 2019 to 07 NOV 2019