

LOC/DME I-MED <b>111.1</b> Chan <b>48</b>	APP CRS <b>093°</b>	Rwy Idg <b>12246</b> TDZE <b>672</b> Apt Elev <b>680</b>
---	------------------------	--

# ILS RWY 10L (SA CAT I)

CHICAGO O'HARE INTL (ORD)

From GIBNS: RNAV-1 GPS required.  
 RNAV 1-GPS or RADAR required for procedure entry. DME or RADAR required.  
 Simultaneous approach authorized. Requires specific OPSPEC, MSPEC, or LOA approval and use of HUD to DH.

ALSf-2  
 MISSED APPROACH: Climb to 4000 on heading 093° and CGT VORTAC R-336 to CGT VORTAC and hold.

CHICAGO APP CON <b>119.0 292.125</b>	O'HARE TOWERS <b>128.15 348.0</b> (Rwy 9L/27R) <b>133.0 348.0</b> (10R/28L) <b>120.75 121.15 126.9 132.7 348.0</b> (CENTER)	GND CON (TWR CENTER) <b>124.125</b> (TWR NORTH) <b>118.05</b> (TWR SOUTH) <b>226.675</b> (ALL TWR'S)	(TWR CENTER) <b>121.75</b> (OBND) <b>121.9</b> (IBND)	CLNC DEL <b>121.6</b>
---	--	---	---	--------------------------

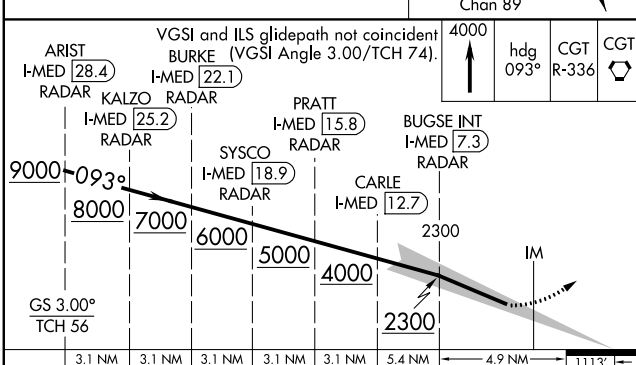
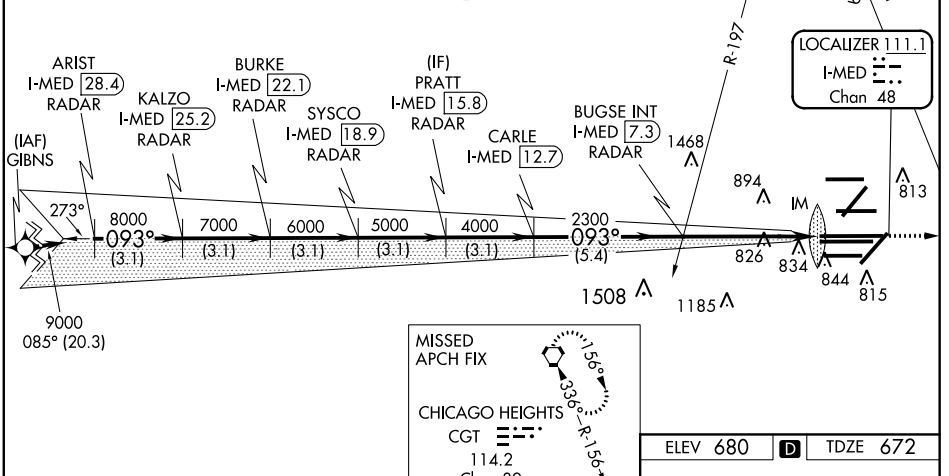
D-ATIS **135.4**  
**282.225**

ALTERNATE MISSED APCH FIX

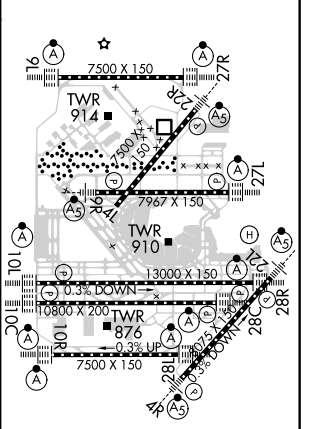
MSA ORD 25 NM  
3400

NORTHBROOK  
113.0 OBK  
Chan 77

CPDLC



ELEV 680	TDZE 672
----------	----------



3.1 NM	3.1 NM	3.1 NM	3.1 NM	3.1 NM	5.4 NM	4.9 NM	1113'
CATEGORY	A		B		C	D	
S-ILS 10L	RA 162/14		150 DA 822				

**SA CATEGORY I ILS - SPECIAL AIRCREW & AIRCRAFT CERTIFICATION REQUIRED**

HIRL all Rwy's  
 TDZ/CL all Rwy's except 4L

EC-3, 10 OCT 2019 to 07 NOV 2019

EC-3, 10 OCT 2019 to 07 NOV 2019