

LOC/DME I-IAC 110.5 Chan 42	APP CRS 273°	Rwy ldg 7782 TDZE 654 Apt Elev 680
---	------------------------	--

ILS RWY 27L (CAT II & III)

CHICAGO O'HARE INTL (ORD)

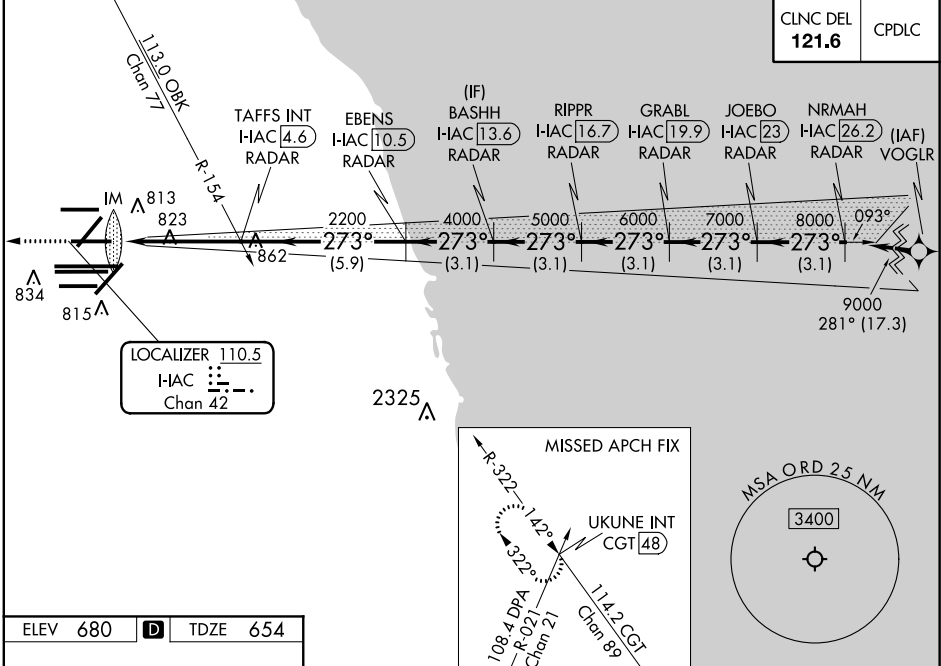
From VOGLR: RNAV 1-GPS required.
 Aircraft not GPS equipped - RADAR required for procedure entry.
 DME or RADAR required.

ALSF-2

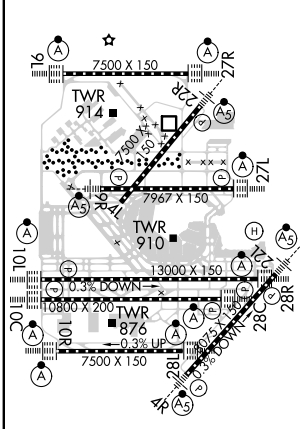
MISSED APPROACH: Climb to 1200 then climbing right turn to 4000 on heading 295° and on CGT VORTAC R-322 to UKUNE INT/CGT 48 DME and hold.

Simultaneous approach authorized.

D-ATIS 135.4	CHICAGO APP CON 119.0 292.125	O'HARE TOWERS 128.15 348.0 (Rwy 9L/27R) 133.0 348.0 (10R/28L) 120.75 121.15 126.9 132.7 348.0 (CENTER)	GND CON (TWR NORTH) 124.125 (TWR SOUTH) 118.05 (ALL TWR) 226.675	(TWR CENTER) 121.75 (OBND) (IBND) 121.9
------------------------	---	--	--	--



ELEV 680	D	TDZE 654
----------	----------	----------



HIRL all Rwys
 TDZ/CL all Rwys except 4L

1200	4000	CGT R-322	UKUNE INT	VGSIs and ILS glidepath not coincident (VGSi Angle 3.00/TCH 67).				
hdg 295°				BASHH I-HAC 13.6 RADAR	GRABL I-HAC 19.9 RADAR	JOEBO I-HAC 23 RADAR	NRMAH I-HAC 26.2 RADAR	
		TAFFS INT I-HAC 4.6 RADAR	EBENS I-HAC 10.5 RADAR	RIPPR I-HAC 16.7 RADAR				
		I-HAC DME ANTENNA	IM 750	9000				
		2200	4000	5000	6000	7000	8000	
		2200	273°					9000
		1040'	4.7 NM	5.9 NM	3.1 NM	3.1 NM	3.1 NM	
CATEGORY	A	B	C	D				
S-ILS 27L	CAT II RA 110/12			100 DA 754				
S-ILS 27L	CAT III RVR 06							

CATEGORY II & III ILS - SPECIAL AIRCREW & AIRCRAFT CERTIFICATION REQUIRED

EC-3, 10 OCT 2019 to 07 NOV 2019

EC-3, 10 OCT 2019 to 07 NOV 2019