

LOC/DME I-ABU <b>111.75</b> Chan 54 (Y)	APP CRS <b>273°</b>	Rwy Idg <b>7500</b> TDZE <b>664</b> Apt Elev <b>680</b>
---	------------------------	---

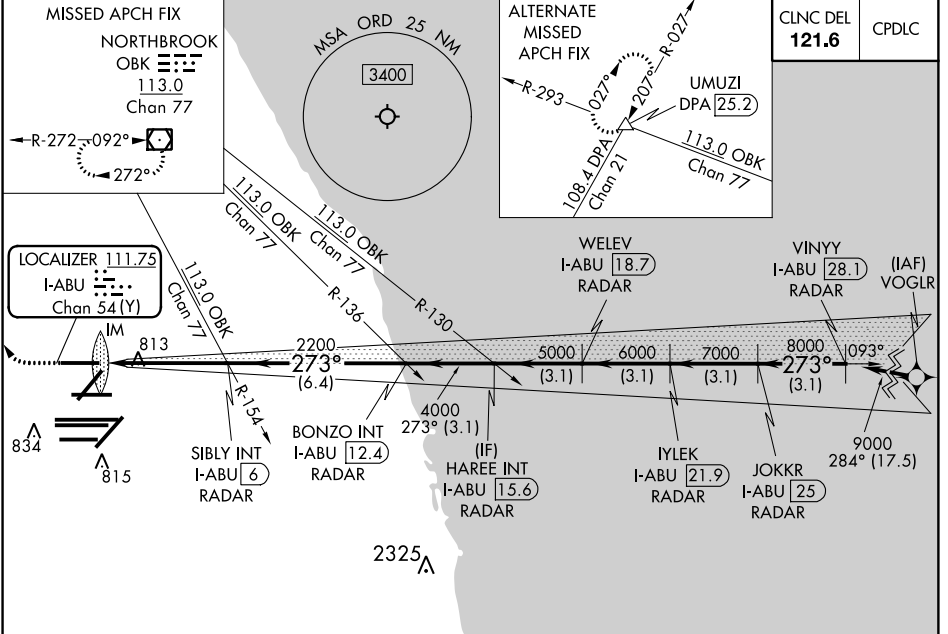
# ILS RWY 27R (CAT II & III)

CHICAGO O'HARE INTL (ORD)

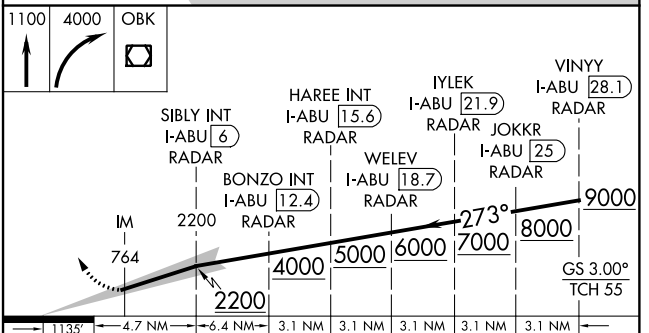
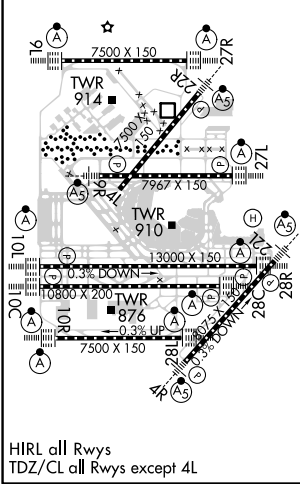
RNAV-1 GPS or RADAR required for procedure entry. RADAR or DME required. **ALSF-2** MISSED APPROACH: Climb to 1100 then climbing right turn to 4000 direct OBK VOR/DME and hold, continue climb-in-hold to 4000.

Simultaneous approach authorized.

D-ATIS <b>135.4</b>	CHICAGO APP CON <b>119.0 292.125</b>	O'HARE TOWERS <b>128.15 348.0 133.0 348.0</b> (10R/28L) <b>120.75 121.15 126.9 132.7 348.0</b> (CENTER)	GND CON (TWR NORTH) <b>124.125</b> (TWR SOUTH) <b>118.05</b> (ALL TWS) <b>226.675</b>	TWR CENTER <b>121.75</b> (OBND) TWR INBD <b>121.9</b>
------------------------	---	---	--	--



ELEV 680	<b>D</b>	TDZE 664
----------	----------	----------



CATEGORY	A	B	C	D
S-ILS-27R	CAT II RA 101/12 100 DA 764			
S-ILS-27R	CAT III RVR 06			

## CATEGORY II & III ILS - SPECIAL AIRCREW & AIRCRAFT CERTIFICATION REQUIRED

EC-3, 10 OCT 2019 to 07 NOV 2019

EC-3, 10 OCT 2019 to 07 NOV 2019