

|   |                        |                         |
|---|------------------------|-------------------------|
| LOC/DME I-VZE<br><b>108.95</b><br>Chan 26 (Y) | APP CRS<br><b>273°</b> | Rwy ldg<br><b>10800</b> |
|   |                        | TDZE<br><b>651</b>      |
|   |                        | Apt Elev<br><b>680</b>  |

# ILS RWY 28C (CAT II & III)

CHICAGO O'HARE INTL (ORD)

From VOGLR: RNAV 1-GPS required.  
Aircraft not GPS equipped - RADAR required for procedure entry.  
DME or RADAR required.

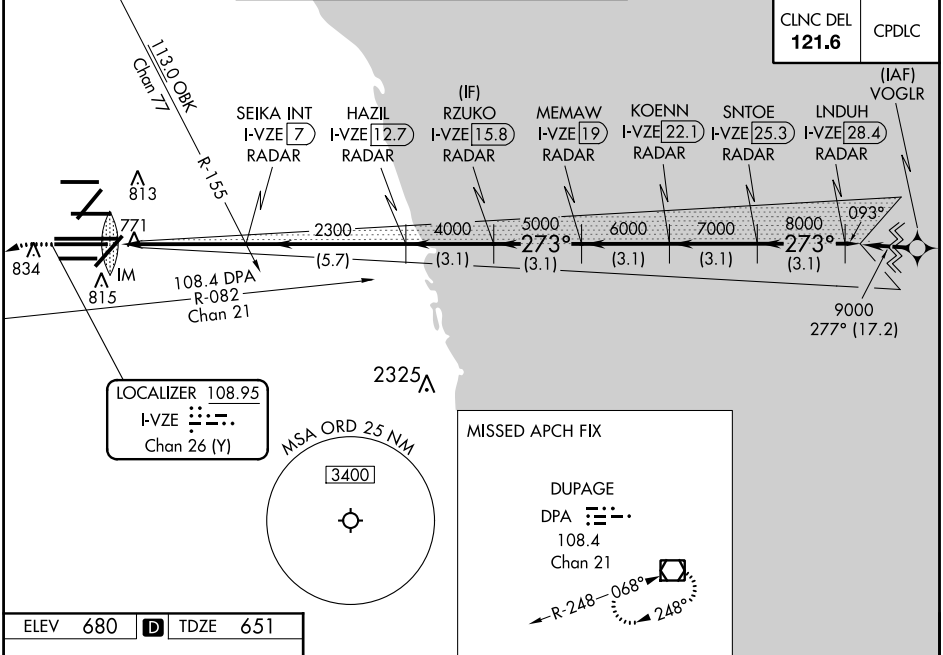


MISSED APPROACH: Climb to 1100 then climbing left turn to 4000 on heading 215° and DPA VOR/DME R-082 to DPA VOR/DME and hold.

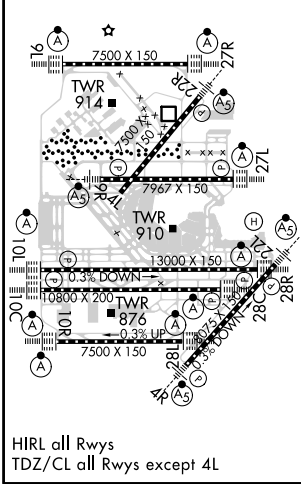
Simultaneous approach authorized. CAT II: RVR 1000 authorized with specific OPSPEC, MSPEC, or LOA approval and use of outland or HUD to touchdown.

|                        |   |  |   |   |
|------------------------|---|--|---|---|
| D-ATIS<br><b>135.4</b> | CHICAGO APP CON<br><b>119.0 292.125</b> | O'HARE TOWERS<br><b>128.15 348.0</b> (Rwy 9L/27R)<br><b>133.0 348.0</b> (10R/28L)<br><b>120.75 121.15 126.9 132.7 348.0</b> (CENTER) | CND CON<br><b>124.125</b> (TWR NORTH)<br><b>118.05</b> (TWR SOUTH)<br><b>226.675</b> (ALL TWRs) | (TWR CENTER)<br><b>121.75</b> (OBND)<br><b>121.9</b> (IBND) |
|------------------------|---|--|---|---|

|                          |       |
|--------------------------|-------|
| CNLC DEL<br><b>121.6</b> | CPDLC |
|--------------------------|-------|



|                 |          |                 |
|-----------------|----------|-----------------|
| ELEV <b>680</b> | <b>D</b> | TDZE <b>651</b> |
|-----------------|----------|-----------------|



|           |                             |           |     |   |                                    |
|-----------|-----------------------------|-----------|-----|---|------------------------------------|
| 1100      | 4000                        | DPA R-082 | DPA | VGSI and ILS glidepath not coincident (VGSI Angle 3.00/TCH 80). | LNDUH I-VZE [28.4] RADAR           |
| hdg 215°  |                             |           |     |   | RZUKO I-VZE [15.8] RADAR           |
|           |                             |           |     |   | KOENN I-VZE [22.1] RADAR           |
|           |                             |           |     |   | SNTOE I-VZE [25.3] RADAR           |
|           |                             |           |     |   | MEMAW I-VZE [19] RADAR             |
|           |                             |           |     |   | HAZIL I-VZE [12.7] RADAR           |
|           |                             |           |     |   | SEIKA INT I-VZE [7] RADAR          |
|           |                             |           |     |   | IM 2300                            |
|           |                             |           |     |   | 2300                               |
|           |                             |           |     |   | 4000                               |
|           |                             |           |     |   | 5000                               |
|           |                             |           |     |   | 6000                               |
|           |                             |           |     |   | 7000                               |
|           |                             |           |     |   | 8000                               |
|           |                             |           |     |   | 9000                               |
|           |                             |           |     |   | GS 3.00° TCH 55                    |
|           |                             |           |     |   | 3.1 NM 3.1 NM 3.1 NM 3.1 NM 3.1 NM |
| CATEGORY  | A                           | B         | C   | D   |                                    |
| S-ILS 28C | CAT II RA 105/12 100 DA 751 |           |     |   |                                    |
| S-ILS 28C | CAT III RVR 06              |           |     |   |                                    |

**CATEGORY II & III ILS - SPECIAL AIRCREW & AIRCRAFT CERTIFICATION REQUIRED**

EC-3, 10 OCT 2019 to 07 NOV 2019

EC-3, 10 OCT 2019 to 07 NOV 2019