

LOC/DME I-TSL <b>111.1</b> Chan 48	APP CRS <b>273°</b>	Rwy ldg TDZE Apt Elev	<b>13000</b> <b>651</b> <b>680</b>
--	------------------------	-----------------------------	--

# ILS RWY 28R (CAT II & III)

CHICAGO O'HARE INTL (ORD)

From VOGLR: RNAV 1-GPS required.  
Aircraft not GPS equipped - RADAR required for procedure entry.  
DME or RADAR required.

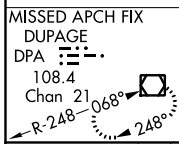
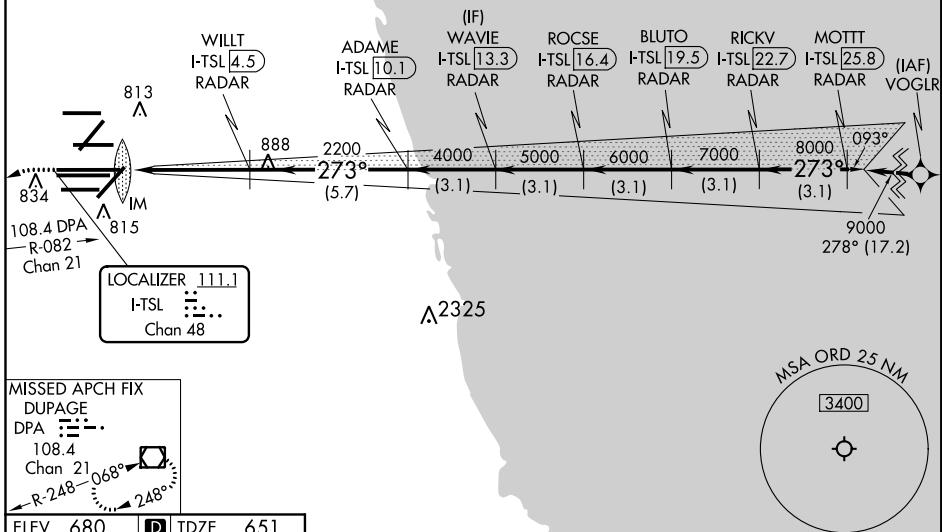


MISSED APPROACH: Climb to 1100 then climbing left turn to 4000 on heading 215° and DPA VOR/DME R-082 to DPA VOR/DME and hold.

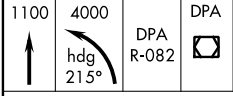
Simultaneous approach authorized.

D-ATIS <b>135.4</b>	CHICAGO APP CON <b>119.0 292.125</b>	O'HARE TOWERS <b>128.15 348.0</b> (Rwy 9L/27R) <b>133.0 348.0</b> (10R/28L)	GND CON (TWR CENTER) <b>124.125</b> (TWR NORTH) <b>121.75</b> (OBND)
<b>282.225</b>		<b>120.75 121.15 126.9 132.7 348.0</b> (CENTER)	<b>118.05</b> (TWR SOUTH) <b>121.9</b> (IBND)
			<b>226.675</b> (ALL TWRs)

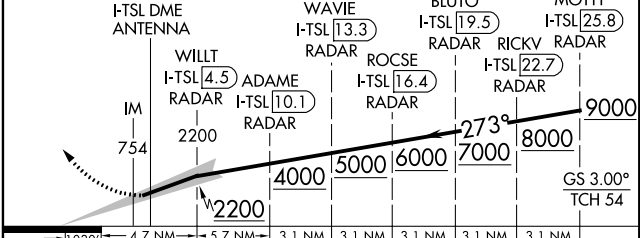
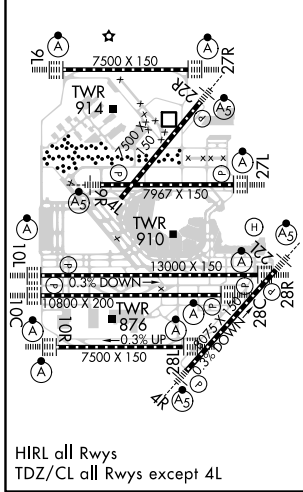
CLNC DEL <b>121.6</b>	CPDLC
--------------------------	-------



ELEV 680	TDZE 651
----------	----------



VGSI and ILS glidepath not coincident (VGSI Angle 3.00/TCH 70).



CATEGORY	A	B	C	D
S-ILS 28R	CAT II RA 97/12 100 DA 751			
S-ILS 28R	CAT III RVR 06			

## CATEGORY II & III ILS - SPECIAL AIRCREW & AIRCRAFT CERTIFICATION REQUIRED

EC-3, 10 OCT 2019 to 07 NOV 2019

EC-3, 10 OCT 2019 to 07 NOV 2019