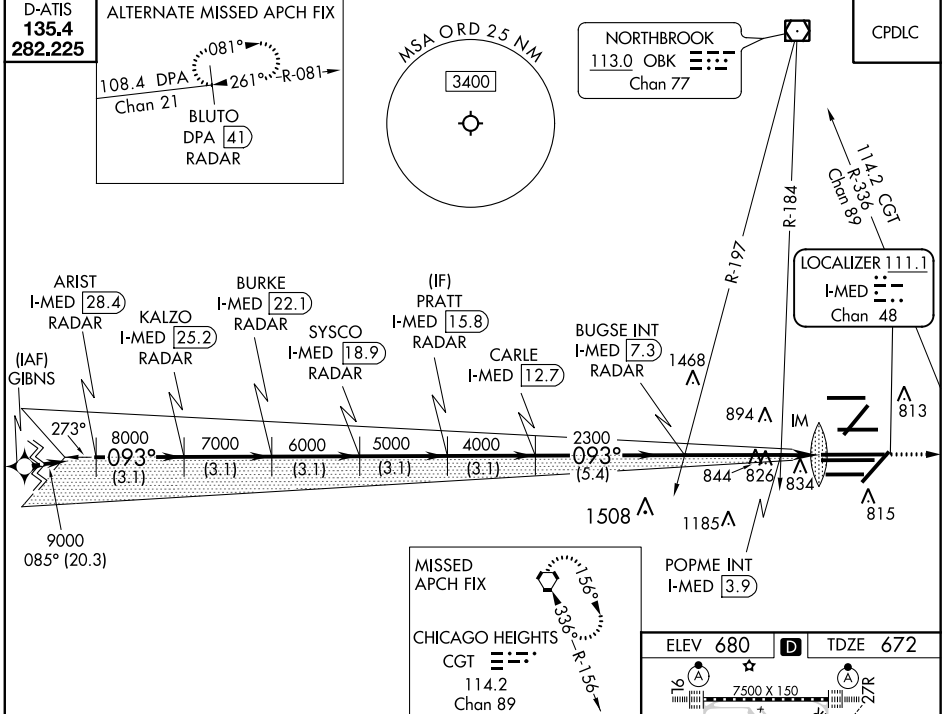


LOC/DME I-MED 111.1 Chan 48	APP CRS 093°	Rwy ldg 12246 TDZE 672 Apt Elev 680
---	------------------------	--

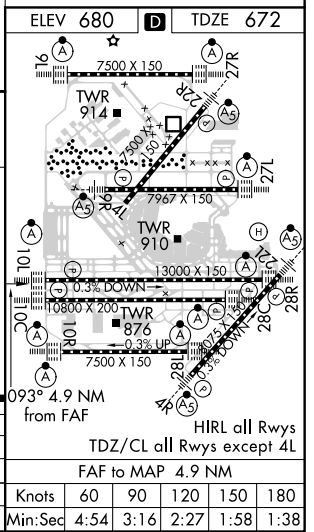
ILS or LOC RWY 10L

CHICAGO O'HARE INTL (ORD)

From GIBNS: RNAV-1 GPS required.		ALSF-2 	MISSED APPROACH: Climb to 4000 on heading 093° and CGT VORTAC R-336 to CGT VORTAC and hold.	
RNAV 1-GPS or RADAR required for procedure entry. DME or RADAR required.				
Simultaneous approach authorized.				
CHICAGO APP CON 119.0 292.125	O'HARE TOWERS 128.15 348.0 (Rwy 9L/27R) 133.0 348.0 (10R/28L) 120.75 121.5 126.9 132.7 348.0 (CENTER)	GND CON (TWR CENTER) 124.125 (TWR NORTH) 118.05 (TWR SOUTH) 226.675 (ALL TWRs)	121.75 (OBND) 121.9 (IBND)	CLNC DEL 121.6



ARIST I-MED [28.4] RADAR	BURKE I-MED [22.1] RADAR	PRATT I-MED [15.8] RADAR	BUGSE INT I-MED [7.3]	CGT 4000	hdg 093°	CGT R-336
KALZO I-MED [25.2] RADAR	SYSCO I-MED [18.9] RADAR	CARLE I-MED [12.7] RADAR	POPME INT I-MED [3.9]	4000		
9000 093°	8000	7000	6000	5000	4000	2300
GS 3.00° TCH 56	3.1 NM	3.1 NM	3.1 NM	3.1 NM	3.1 NM	5.4 NM
3.1 NM	3.1 NM	3.1 NM	3.1 NM	3.1 NM	3.4 NM	1.4 NM
CATEGORY A			CATEGORY B		CATEGORY C	
S-ILS 10L		872/18		200 (200-½)		
S-LOC 10L		1200/24 528 (600-½)		1200/55 528 (600-1)		
POPME FIX MINIMUMS (DUAL VOR RECEIVERS OR DME REQUIRED)						
S-LOC 10L		1080/24 408 (400-½)		1080/40 408 (400-¾)		



EC-3, 10 OCT 2019 to 07 NOV 2019

EC-3, 10 OCT 2019 to 07 NOV 2019