

LOC/DME I-AIC 110.5 Chan 42	APP CRS 273°	Rwy ldg TDZE Apt Elev	7782 654 680
---	------------------------	-----------------------------	---

ILS or LOC RWY 27L

CHICAGO O'HARE INTL (ORD)

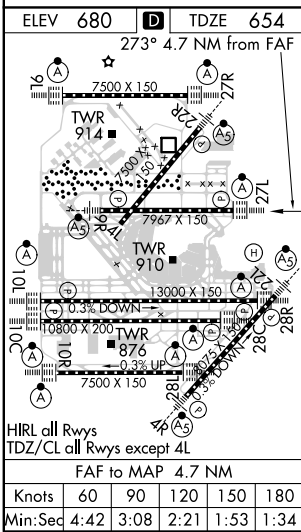
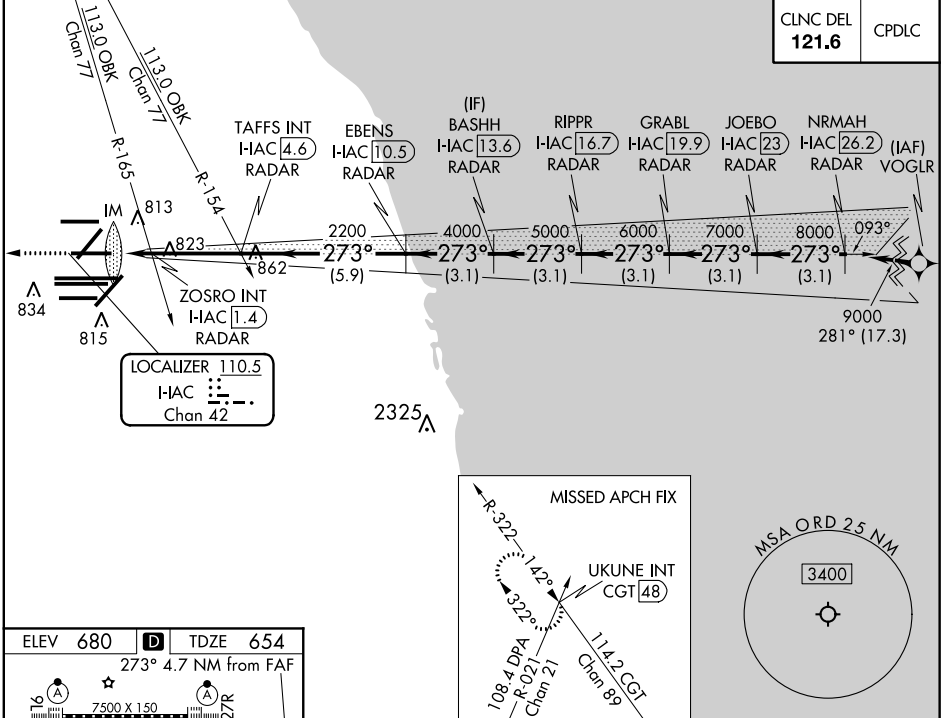
From VOGLR: RNAV 1-GPS required.
 Aircraft not GPS equipped - RADAR required for procedure entry.
 DME or RADAR required.

ALSF-2

MISSED APPROACH: Climb to 1200 then climbing right turn to 4000 on heading 295° and on CGT VORTAC R-322 to UKUNE INT/CGT 48 DME and hold.

Simultaneous approach authorized.

D-ATIS 135.4 282.225	CHICAGO APP CON 119.0 292.125	O'HARE TOWERS 128.15 348.0 (Rwy 9L/27R) 133.0 348.0 (10R/28L) 120.75 121.15 126.9 132.7 348.0 (CENTER)				GND CON (TWR CENTER) 124.125 (TWR NORTH) 121.75 (OBND) (TWR SOUTH) 121.9 (IBND) 226.675 (ALL TWSR)
--	---	--	--	--	--	--



ELEV 680	TDZE 654	273° 4.7 NM from FAF	
1200	4000	CGT R-322	UKUNE INT
VGSI and ILS glidepath not coincident (VGSI Angle 3.00/TCH 67).			
*LOC only		TAFSS INT I-HAC 4.6	GRABL I-HAC 19.9
I-HAC DME ANTENNA		EBENS I-HAC 10.5	JOEBO I-HAC 23
I-HAC 0.1		ZOSRO INT I-HAC 1.4	NRMAH I-HAC 26.2
IM		2200	9000
*1160		4000	8000
0.1		5000	7000
1.4		6000	6000
3.2 NM		7000	5000
-5.9 NM		8000	4000
		9000	3000
GS 3.00° TCH 55			
CATEGORY	A	B	C
S-ILS 27L	854/18 200 (200-½)		
S-LOC 27L	1160/24	506 (500-½)	1160/55 506 (500-1)
ZOSRO FIX MINIMUMS (DUAL VOR RECEIVERS OR DME REQUIRED)			
S-LOC 27L	1080/24	426 (400-½)	1080/40 426 (400-¾)

EC-3, 10 OCT 2019 to 07 NOV 2019

EC-3, 10 OCT 2019 to 07 NOV 2019