

LOC/DME I-VZE 108.95 Chan 26 (Y)	APP CRS 273°	Rwy Idg TDZE Apt Elev	10800 651 680
---	------------------------	-----------------------------	--

ILS or LOC RWY 28C

CHICAGO O'HARE INTL (ORD)

From VOGLR: RNAV 1-GPS required.
Aircraft not GPS equipped - RADAR required for procedure entry.
DME or RADAR required.

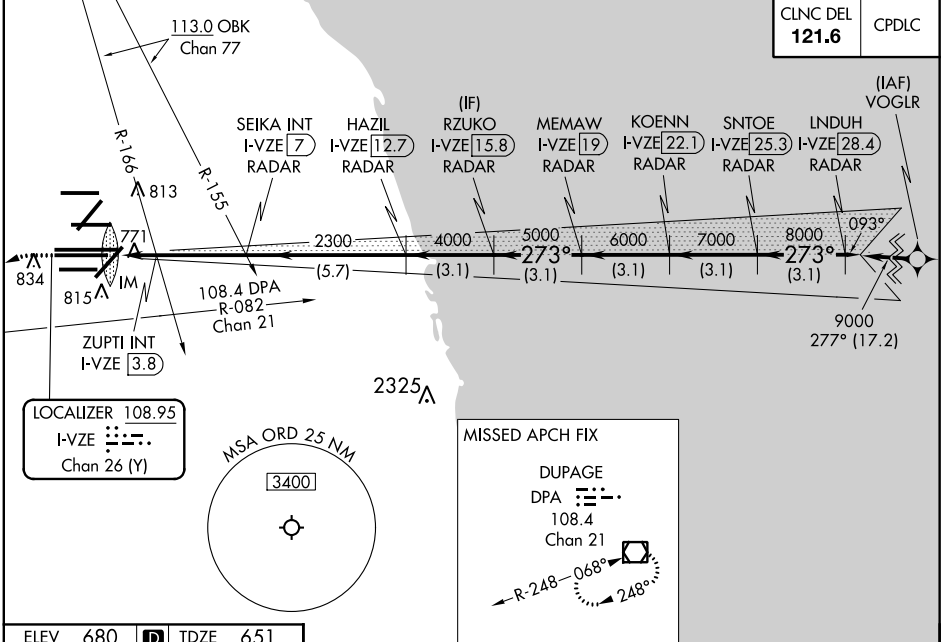
▼ Simultaneous approach authorized.

ALSf-2

MISSED APPROACH: Climb to 1100 then climbing left turn to 4000 on heading 215° and DPA VOR/DME R-082 to DPA VOR/DME and hold.

D-ATIS 135.4 282.225	CHICAGO APP CON 119.0 292.125	O'HARE TOWERS 128.15 348.0 (Rwy 9L/27R) 133.0 348.0 (10R/28L) 120.75 121.15 126.9 132.7 348.0 (CENTER)	GND CON (TWR CENTER) 124.125 (TWR NORTH) 121.75 (OBND) (TWR SOUTH) 121.9 (IBND) 226.675 (ALL TWRs)
--	--	--	--

CLNC DEL 121.6	CPDLC
--------------------------	-------

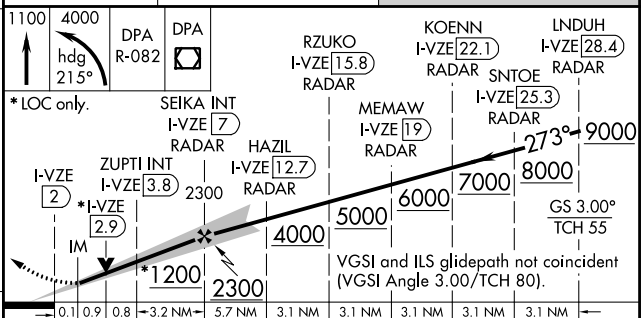


ELEV 680	D	TDZE 651
----------	---	----------

HIRL all Rwws TDZ/CL all Rwws except 4L

FAF to MAP 5 NM

Knots	60	90	120	150	180
Min:Sec	5:00	3:20	2:30	2:00	1:40



CATEGORY	A	B	C	D
S-ILS 28C	851/18 200 (200-½)			
S-LOC 28C	1200/24	549 (600-½)	1200/60	549 (600-1¼)
ZUPTI FIX MINIMUMS (DUAL VOR RECEIVERS OR DME REQUIRED)				
S-LOC 28C	1040/24	389 (400-½)	1040/35	389 (400-¾)

EC-3, 10 OCT 2019 to 07 NOV 2019

EC-3, 10 OCT 2019 to 07 NOV 2019