

LOC/DME I-VQX 110.75 Chan 44(Y)	APP CRS 274°	Rwy ldg TDZE Apt Elev	7500 667 680
---	------------------------	-----------------------------	---

ILS or LOC RWY 28L

CHICAGO O'HARE INTL (ORD)

Aircraft not GPS equipped - RADAR required for procedure entry. DME or RADAR required.
From VOGLR: RNAV 1-GPS required.

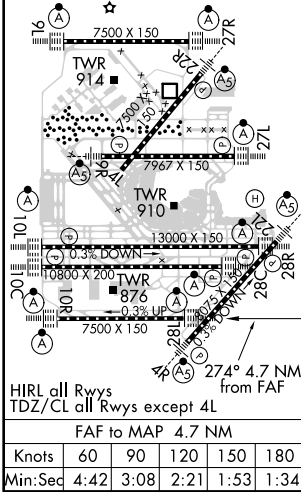
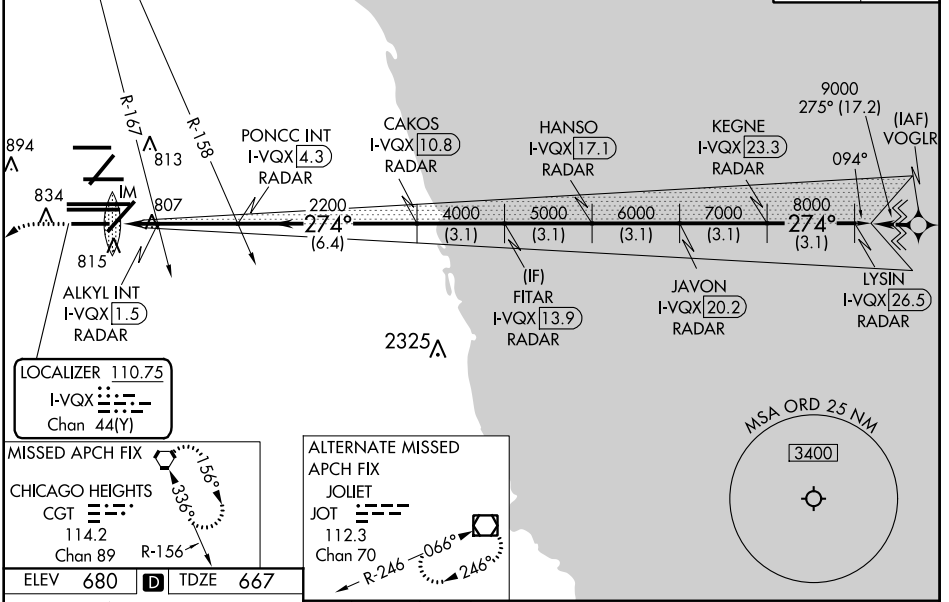
ALSF-2

MISSED APPROACH: Climb to 1200 then climbing left turn to 4000 direct CGT VORTAC and hold.

Simultaneous approach authorized.

D-ATIS 135.4 282.225	CHICAGO APP CON 119.0 292.125	O'HARE TOWERS 128.15 348.0 (Rwy 9L/27R) 133.0 348.0 (10R/28L) 226.675 (CENTER)	GND CON (TWR CENTER) 121.75 (OBND) (TWR NORTH) 121.90 (OBND) (TWR SOUTH) 121.9 (IBND) (ALL TWSR) 226.675
--	---	--	--

CLNC DEL 121.6	CPDLC
--------------------------	-------



1200	4000	CGT	*LOC only.						
I-VQX DME ANTENNA		ALSKY INT I-VQX [1.5] RADAR	PONCC INT I-VQX [4.3] RADAR	CAKOS I-VQX [10.8] RADAR	FITAR I-VQX [13.9] RADAR	JAVON I-VQX [20.2] RADAR	LYSIN I-VQX [26.5] RADAR	KEGNE I-VQX [23.3] RADAR	HANSO I-VQX [17.1] RADAR
I-VQX [0.3]		*I-VQX [0.8]	2200	4000	5000	6000	7000	8000	9000
0.2		0.9	0.7	2.9 NM	6.4 NM	3.1 NM	3.1 NM	3.1 NM	3.1 NM
CATEGORY	A		B		C		D		
S-LS 28L	867/18 200 (200-½)								
S-LOC 28L	1240/24 573 (600-½)			1240-1/4 573 (600-1¼)					
ALKYL FIX MINIMUMS (DUAL VOR RECEIVERS OR DME REQUIRED)									
S-LOC 28L	1060/24 393 (400-½)			1060/35 393 (400-5/8)					

EC-3, 10 OCT 2019 to 07 NOV 2019

EC-3, 10 OCT 2019 to 07 NOV 2019