

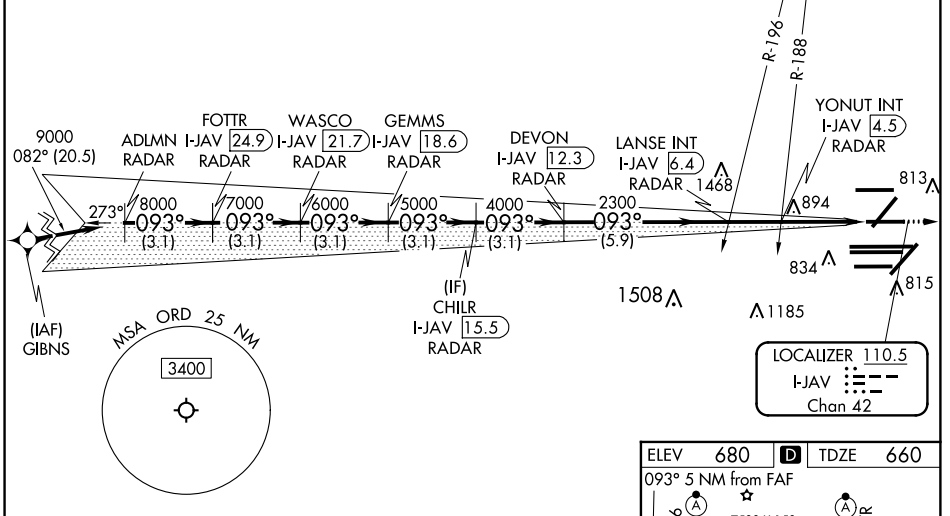
|  |                        |  |
|--|------------------------|--|
| LOC/DME I-JAV<br><b>110.5</b><br>Chan 42 | APP CRS<br><b>093°</b> | Rwy Idg<br>TDZE<br>Apt Elev<br><b>7709</b><br><b>660</b><br><b>680</b> |
|--|------------------------|--|

# ILS or LOC RWY 9R

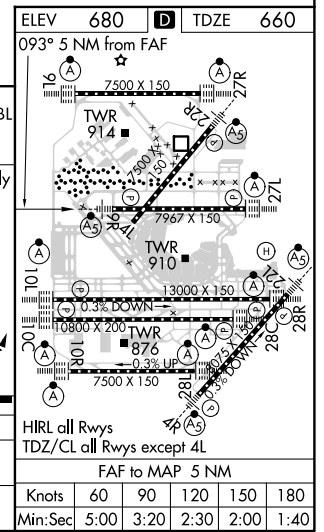
CHICAGO O'HARE INTL (ORD)

|   |           |   |
|---|-----------|---|
| From GIBNS: RNAV 1-GPS required. RADAR or DME required.<br>Aircraft not GPS equipped: RADAR required for procedure entry. | MALSR<br> | MISSED APPROACH: Climb to 4000 on OBK VOR/DME R-124 to GRABL INT/OBK 26.9 DME/RADAR and hold. |
| Simultaneous approach authorized.<br>For inop ALS, increase S-LOC 9R Cat C/D visibility to 1 1/2 SM.                      |           |   |

|   |  |  |   |                          |
|---|--|--|---|--------------------------|
| CHICAGO APP CON<br><b>119.0 292.125</b> | O'HARE TOWERS<br><b>128.15 348.0</b> (Rwy 9L/27R)<br><b>126.9 132.7 348.0</b> (10R/28L)<br><b>126.9 132.7 348.0</b> (CENTER) | <b>124.125</b> (TWR NORTH)<br><b>118.05</b> (TWR SOUTH)<br><b>226.675</b> (ALL TWRs) | GND CON (TWR CENTER)<br><b>121.75</b> (OBND)<br><b>121.9</b> (IBND) | CLNC DEL<br><b>121.6</b> |
|---|--|--|---|--------------------------|



|   |                          |                          |                             |           |         |        |             |        |        |
|---|--------------------------|--------------------------|-----------------------------|-----------|---------|--------|-------------|--------|--------|
| VGS and ILS glidepath not coincident (VGS Angle 3.00/TCH 74). |                          | 4000                     | OBK R-124                   | GRABL INT |         |        |             |        |        |
| ADLMN RADAR   | WASCO I-JAV [21.7] RADAR | CHILR I-JAV [15.5] RADAR | LANSE INT I-JAV [6.4] RADAR | *LOC only |         |        |             |        |        |
| FOTTR I-JAV [24.9] RADAR                                      | GEMMS I-JAV [18.6] RADAR | DEVON I-JAV [12.3] RADAR | YONUT INT I-JAV [4.5] RADAR |           |         |        |             |        |        |
| 9000  | 8000                     | 7000                     | 6000                        | 5000      | 4000    | 2300   | *1700       |        |        |
| GS 3.00° TCH 57   | 3.1 NM                   | 3.1 NM                   | 3.1 NM                      | 3.1 NM    | 3.1 NM  | 5.9 NM | 1.9 NM      | 1.8 NM | 1.3 NM |
| CATEGORY  | A                        |                          | B                           |           | C       |        | D           |        |        |
| S-ILS 9R  | 860/18                   |                          | 200 (200-1/2)               |           |         |        |             |        |        |
| S-LOC 9R  | 1160/24                  |                          | 500 (500-1/2)               |           | 1160/50 |        | 500 (500-1) |        |        |



EC-3, 10 OCT 2019 to 07 NOV 2019

EC-3, 10 OCT 2019 to 07 NOV 2019