

CHICAGO, ILLINOIS

AL-166 (FAA)

19283

ILS PRM RWY 28C

(CLOSE PARALLEL)

CHICAGO O'HARE INTL (ORD)

LOC/DME I-VZE 108.95 Chan 26 (Y)	APP CRS 273°	Rwy Idg 10800 TDZE 651 Apt Elev 680
--	------------------------	--

Aircraft not GPS equipped - RADAR required for procedure entry. DME or RADAR required. From VOGLR: RNAV 1-GPS required.

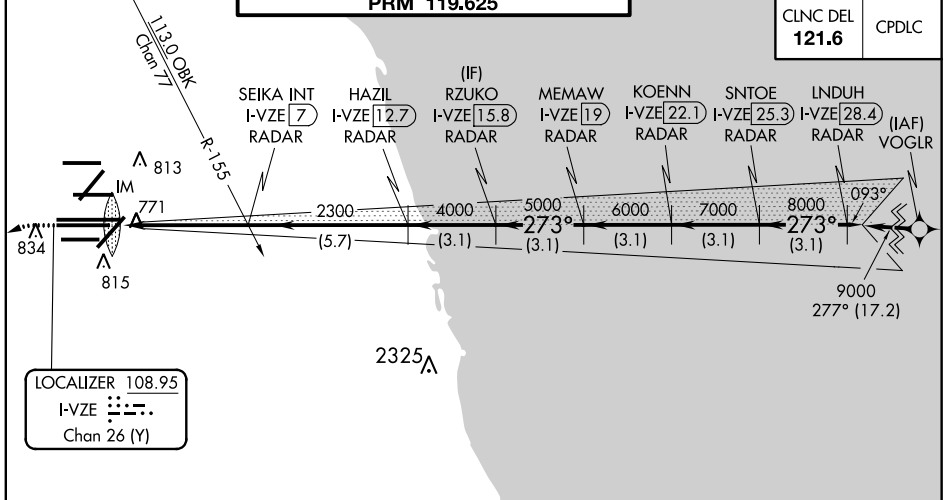
ALSIF-2

MISSED APPROACH: Climb to 1100 then climbing left turn to 4000 on heading 215° and DPA VOR/DME R-082 to DPA VOR/DME and hold.

Simultaneous approach authorized. Use of FD or AP required during simultaneous operations. Dual VHF comm required. See additional requirements on AAUP.

D-ATIS 135.4 282.225	CHICAGO APP CON 119.0 292.125	O'HARE TOWERS 128.15 348.0 (Rwy 9L/27R) 133.0 348.0 (10R/28L) 120.75 121.15 126.9 132.7 348.0 (CENTER) PRM 119.625	GND CON (TWR CENTER) 121.75 (OBND) 121.9 (IBND) (TWR NORTH) 124.125 (TWR SOUTH) 118.05 (ALL TWRS) 226.675
--	---	---	---

CLNC DEL 121.6	CPDLC
--------------------------	-------



EC-3, 10 OCT 2019 to 07 NOV 2019

EC-3, 10 OCT 2019 to 07 NOV 2019

LOCALIZER 108.95
I-VZE
Chan 26 (Y)

MISSED APCH FIX
DUPAGE
DPA
108.4
Chan 21
R-248-068°
248°

MSA ORD 25 NM
3400

ELEV 680	TDZE 651	DPA R-082		RZUKO I-VZE 15.8 RADAR	KOENN I-VZE 22.1 RADAR	LNDUH I-VZE 28.4 RADAR						
		1100	4000	2300	4000	5000	6000	7000	8000	9000		
		hdg 215°		SEIKA INT I-VZE 7 RADAR	HAZIL I-VZE 12.7 RADAR	MEMAW I-VZE 19 RADAR	273° 9000 GS 3.00° TCH 55					
				0.1	4.9 NM	5.7 NM	3.1 NM	3.1 NM	3.1 NM	3.1 NM		
				CATEGORY A	B	C	D					
				S-ILS 28C							851/18 200 (200-1/2)	

CHICAGO, ILLINOIS
Amdt 1A 03JAN19

41°58'N-87°54'W

CHICAGO O'HARE INTL (ORD)

ILS PRM RWY 28C (CLOSE PARALLEL)