

LOC/DME I-VZE 108.95 Chan 26 (Y)	APP CRS 273°	Rwy ldg 10800 TDZE 651 Apt Elev 680
--	------------------------	--

(CLOSE PARALLEL)

CHICAGO O'HARE INTL (ORD)

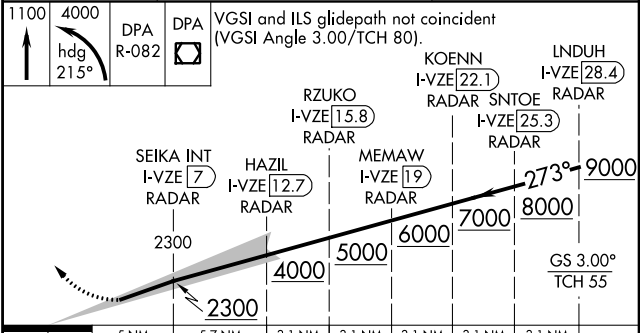
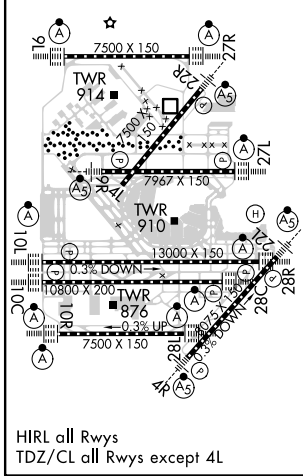
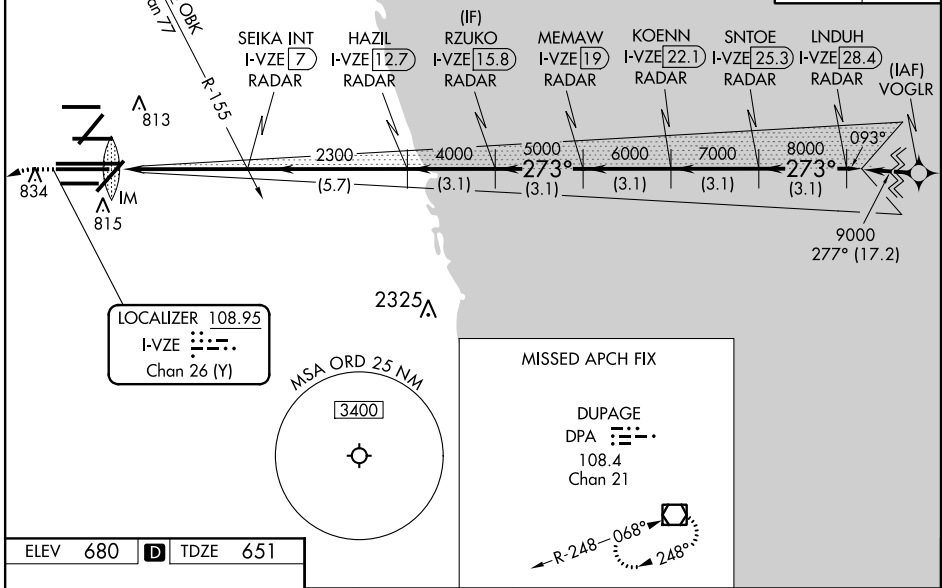
Aircraft not GPS equipped - RADAR required for procedure entry. DME or RADAR required. From VOGLR: RNAV 1-GPS required.

ALSF-2

MISSED APPROACH: Climb to 1100 then climbing left turn to 4000 on heading 215° and DPA VOR/DME R-082 to DPA VOR/DME and hold.

Simultaneous approach authorized. Use of FD or AP required during simultaneous operations. Dual VHF comm required. See additional requirements on AAUP. Requires specific OPSPEC, MSPEC, or LOA approval and use of HUD to DH.

D-ATIS 135.4 282.225	CHICAGO APP CON 119.0 292.125	O'HARE TOWERS 128.15 348.0 (Rwy 9L/27R) 133.0 348.0 (10R/28L) 120.75 121.15 126.9 132.7 348.0 (CENTER) PRM 119.625	GND CON (TWR CENTER) 121.75 (OBND) (TWR NORTH) 121.75 (TWR SOUTH) 121.9 (IBND) 226.675 (ALL TWRs)
CLNC DEL 121.6			CPDLC



1100	4000	DPA	DPA	VGSI and ILS glidepath not coincident (VGSI Angle 3.00/TCH 80)														
↑	hdg 215°	R-082	☐															
<table border="1"> <tr> <td>SEIKA INT I-VZE (7) RADAR</td> <td>HAZIL I-VZE (12.7) RADAR</td> <td>MEMAW I-VZE (19) RADAR</td> <td>KOENN I-VZE (22.1) RADAR</td> <td>LINDUH I-VZE (28.4) RADAR</td> </tr> <tr> <td>RZUKO I-VZE (15.8) RADAR</td> <td>SNTOE I-VZE (25.3) RADAR</td> <td colspan="3"></td> </tr> </table>					SEIKA INT I-VZE (7) RADAR	HAZIL I-VZE (12.7) RADAR	MEMAW I-VZE (19) RADAR	KOENN I-VZE (22.1) RADAR	LINDUH I-VZE (28.4) RADAR	RZUKO I-VZE (15.8) RADAR	SNTOE I-VZE (25.3) RADAR							
SEIKA INT I-VZE (7) RADAR	HAZIL I-VZE (12.7) RADAR	MEMAW I-VZE (19) RADAR	KOENN I-VZE (22.1) RADAR	LINDUH I-VZE (28.4) RADAR														
RZUKO I-VZE (15.8) RADAR	SNTOE I-VZE (25.3) RADAR																	
<table border="1"> <tr> <td>2300</td> <td>4000</td> <td>5000</td> <td>6000</td> <td>7000</td> <td>8000</td> <td>9000</td> </tr> <tr> <td>1044'</td> <td>5 NM</td> <td>5.7 NM</td> <td>3.1 NM</td> <td>3.1 NM</td> <td>3.1 NM</td> <td>3.1 NM</td> </tr> </table>					2300	4000	5000	6000	7000	8000	9000	1044'	5 NM	5.7 NM	3.1 NM	3.1 NM	3.1 NM	3.1 NM
2300	4000	5000	6000	7000	8000	9000												
1044'	5 NM	5.7 NM	3.1 NM	3.1 NM	3.1 NM	3.1 NM												
<table border="1"> <tr> <td>CATEGORY</td> <td>A</td> <td>B</td> <td>C</td> <td>D</td> </tr> <tr> <td>S-ILS 28C</td> <td colspan="4">RA 155/14 150 DA 801</td> </tr> </table>					CATEGORY	A	B	C	D	S-ILS 28C	RA 155/14 150 DA 801							
CATEGORY	A	B	C	D														
S-ILS 28C	RA 155/14 150 DA 801																	
<p>SA CATEGORY I ILS - SPECIAL AIRCREW & AIRCRAFT CERTIFICATION REQUIRED</p>																		

EC-3, 10 OCT 2019 to 07 NOV 2019

EC-3, 10 OCT 2019 to 07 NOV 2019