

LOC/DME I-BYW <b>110.9</b> Chan 46	APP CRS <b>091°</b>	Rwy Idg 7500 TDZE 680 Apt Elev 680
--	------------------------	---

# ILS Y or LOC Y RWY 10R

CHICAGO O'HARE INTL (ORD)

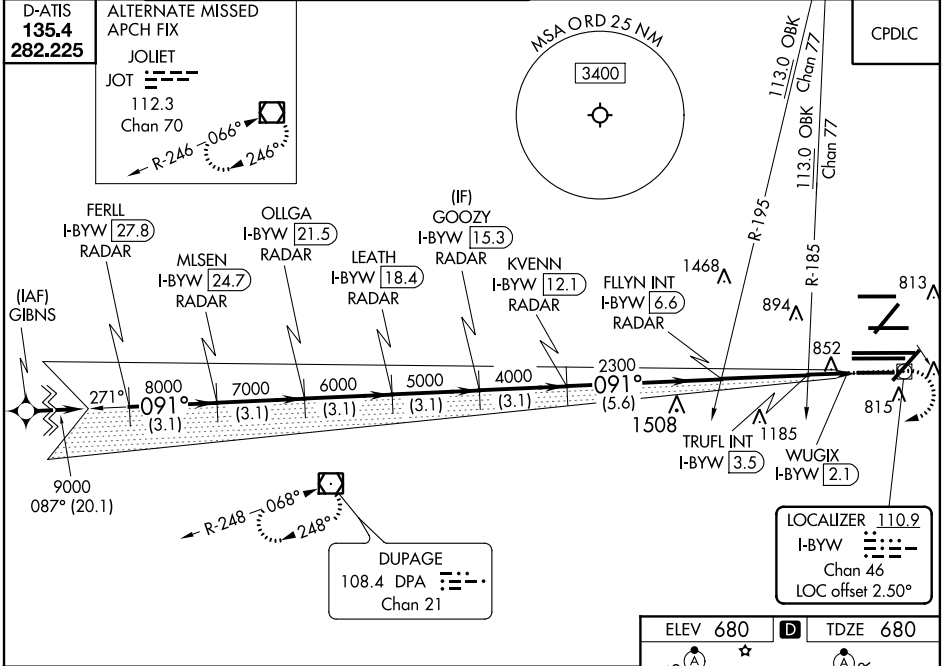
RNAV 1-GPS or RADAR required for procedure entry. DME or RADAR required.  
 From GIBNS: RNAV-1 GPS required.

ALSF-2 (A)

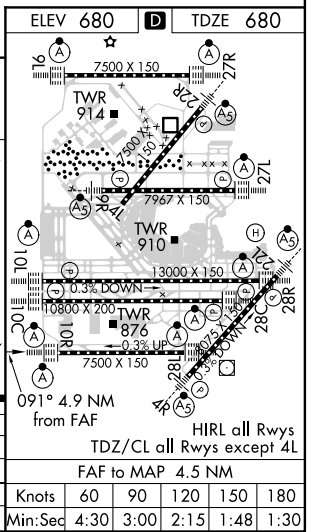
MISSED APPROACH: Climb to 1200 then climbing right turn to 4000 direct DPA VOR/DME and hold.

Simultaneous approach authorized. Inop table does not apply to S-ILS 10R all Cts. For inop ALS, increase S-LOC 10R Cat A and B visibility to 1 SM. Rwy 10R helicopter visibility reduction below 3/4 SM NA.

CHICAGO APP CON <b>119.0 292.125</b>	O'HARE TOWERS <b>128.15 348.0</b> (Rwy 9L/27R) <b>133.0 348.0</b> (10R/28L) <b>126.9 132.7 348.0</b> (CENTER)	GND CON (TWR NORTH) <b>124.125</b> (TWR SOUTH) <b>118.05</b> (ALL TWS) <b>226.675</b>	(TWR CENTER) <b>121.75</b> (OBND) <b>121.9</b> (IBND)	CLNC DEL <b>121.6</b>
---	--	--	---	--------------------------



FERLL I-BYW RADAR [27.8]	OLLGA I-BYW RADAR [21.5]	GOOZY I-BYW RADAR [15.3]	FLYIN INT I-BYW RADAR [6.6]	TRUFL INT I-BYW RADAR [3.5]	WUGIX I-BYW RADAR [2.1]
MLSN I-BYW RADAR [24.7]	LEATH I-BYW RADAR [18.4]	KVENN I-BYW RADAR [12.1]			
9000 091° 8000 7000 6000 5000 4000 2300 1200 4000 DPA GS 3.00° TCH 55 *LOC only.					
3.1 NM	3.1 NM	3.1 NM	3.1 NM	3.1 NM	0.6 0.8 0.4
CATEGORY	A		B		D
S-ILS 10R	930-3/4		250 (300-3/4)		
S-LOC 10R	1220-3/4 540 (600-3/4)		1220-1 540 (600-1)		
TRUFL FIX MINIMUMS (DUAL VOR RECEIVERS OR DME REQUIRED)					
S-LOC 10R	1120-3/4 440 (500-3/4)				



EC-3, 10 OCT 2019 to 07 NOV 2019

EC-3, 10 OCT 2019 to 07 NOV 2019