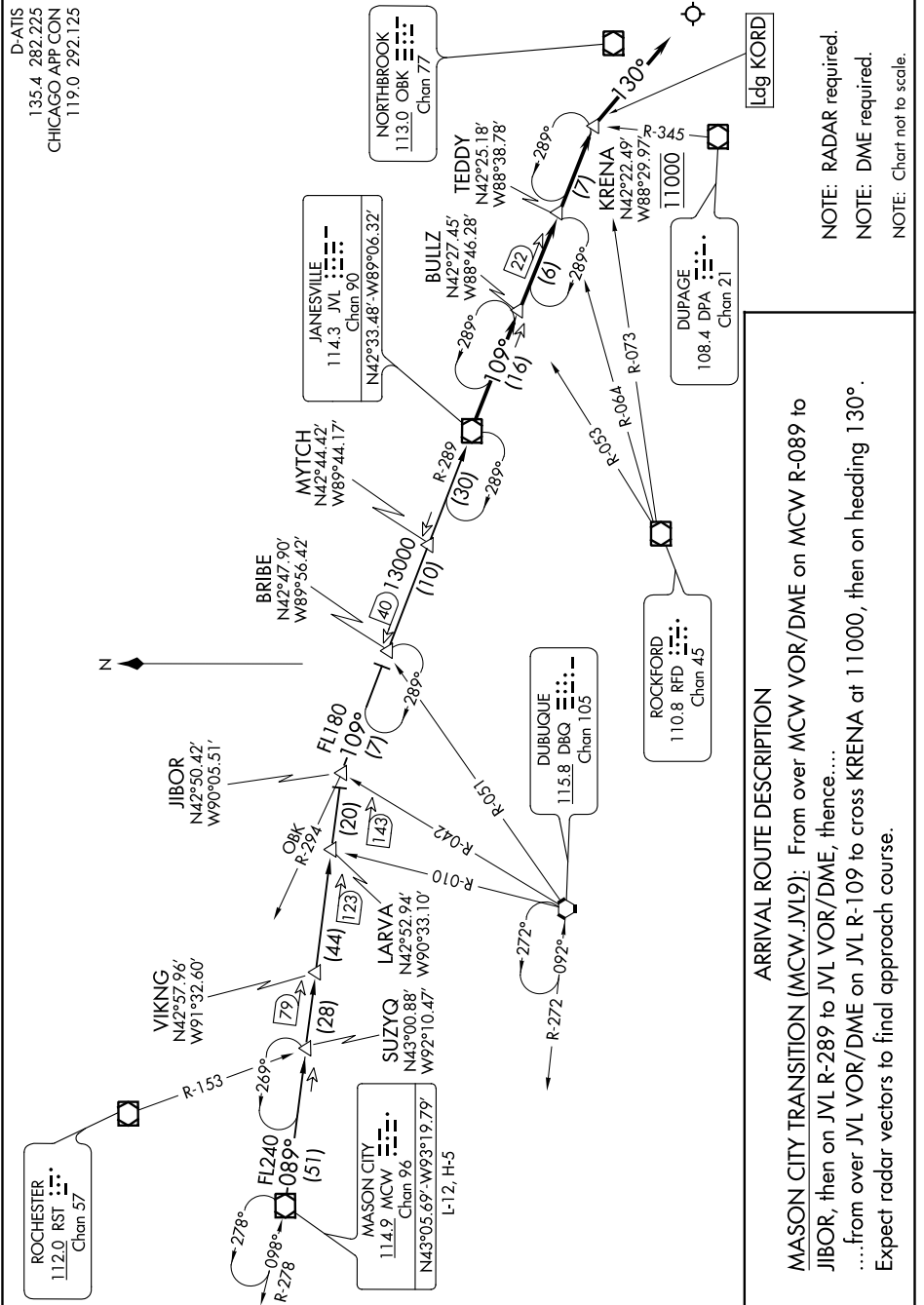


EC-3, 10 OCT 2019 to 07 NOV 2019



D-ATIS  
135.4 282.223  
CHICAGO APP CON  
119.0 292.125

NORTHBROOK  
113.0 OBK  
Chan 77

JANESVILLE  
114.3 JVL  
Chan 90  
N42°33.48'-W89°06.32'

DUPAGE  
108.4 DPA  
Chan 21

ROCKFORD  
110.8 RFD  
Chan 45

DUBUQUE  
115.8 DBQ  
Chan 105

ARRIVAL ROUTE DESCRIPTION

MASON CITY TRANSITION [MCW,JVL9]: From over MCW VOR/DME on MCW R-089 to JIBOR, then on JVL R-289 to JVL VOR/DME, thence...  
...from over JVL VOR/DME on JVL R-109 to cross KRENA at 11000, then on heading 130°. Expect radar vectors to final approach course.

NOTE: RADAR required.  
NOTE: DME required.  
NOTE: Chart not to scale.

EC-3, 10 OCT 2019 to 07 NOV 2019