

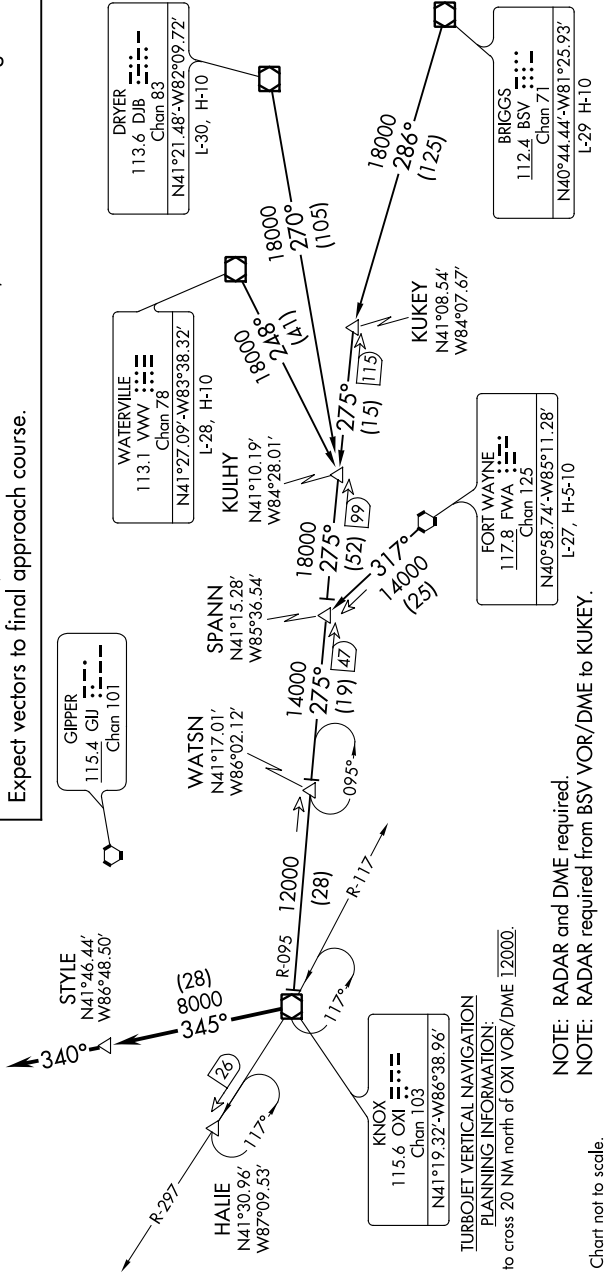
EC-3, 10 OCT 2019 to 07 NOV 2019

D-ATIS  
135.4 282.225  
CHICAGO APP CON  
119.0 292.125

### ARRIVAL ROUTE DESCRIPTION

**BRIGGS TRANSITION (BSV.OX17)**: From over BSV VOR/DME on BSV R-286 to KUKEY, then on OXI R-095 to OXI VOR/DME. Thence....  
**DRYER TRANSITION (DJB.OX17)**: From over DJB VOR/DME on DJB R-270 to KULHY, then on OXI R-095 to OXI VOR/DME. Thence....  
**FORT WAYNE TRANSITION (FWA.OX17)**: From over FWA VORTAC on FWA R-317 to SPANN, then on OXI R-095 to OXI VOR/DME. Thence....  
**WATERVILLE TRANSITION (VWV.OX17)**: From over VWV VOR/DME on VWV R-248 to KULHY, then on OXI R-095 to OXI VOR/DME. Thence....

...from over OXI VOR/DME on OXI R-345 to STYLE, then on 340° heading. Expect vectors to final approach course.



TURBOJET VERTICAL NAVIGATION  
PLANNING INFORMATION:

Expect to cross 20 NM north of OXI VOR/DME 12000.

NOTE: RADAR and DME required.  
NOTE: RADAR required from BSV VOR/DME to KUIKEY.

NOTE: Chart not to scale.

EC-3, 10 OCT 2019 to 07 NOV 2019