

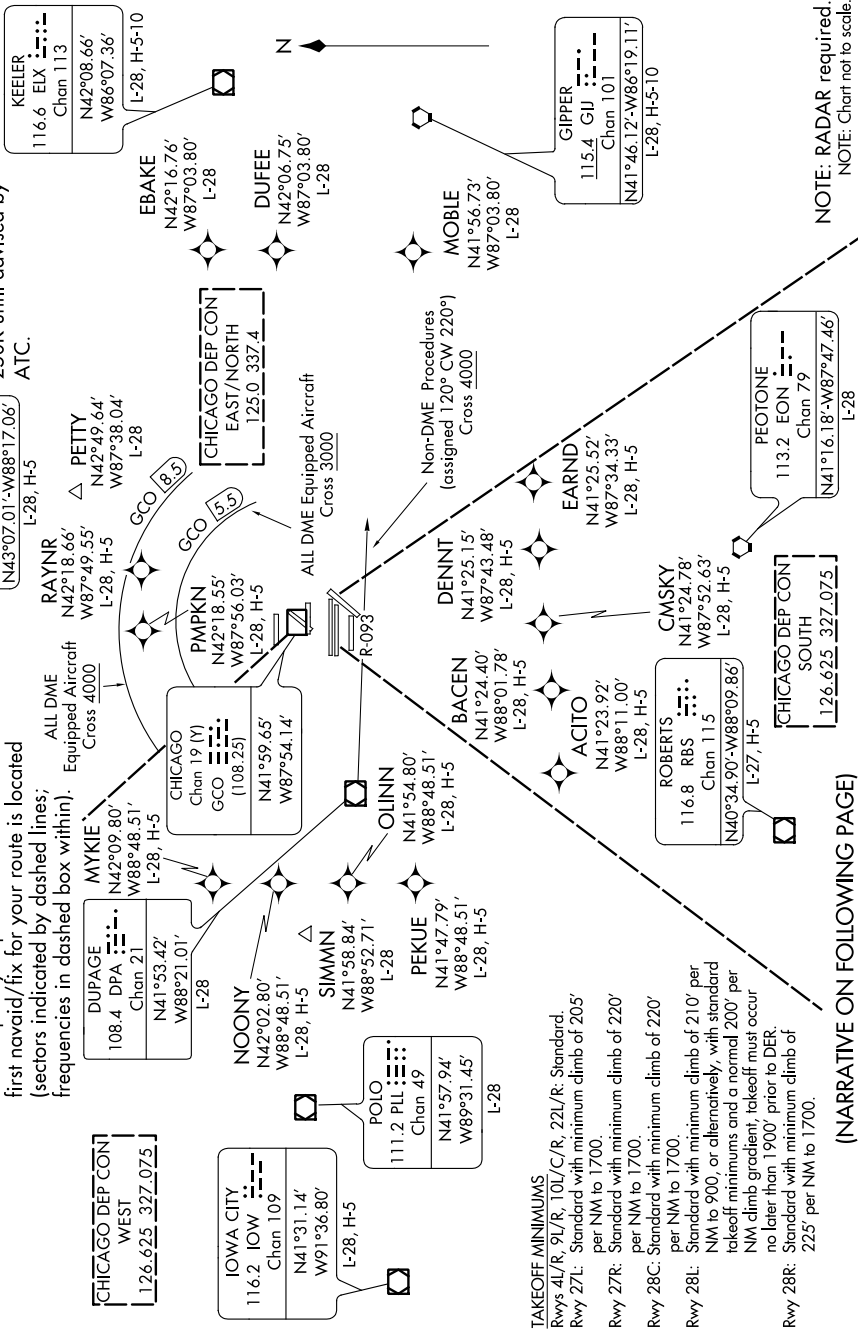
O'HARE FIVE DEPARTURE

EC-3, 10 OCT 2019 to 07 NOV 2019

TOP ALTITUDE:
5000

SPECIAL INSTRUCTIONS: For appropriate departure control frequency, see graphic. Use frequency depicted within the sector where first navaid/fix for your route is located (sectors indicated by dashed lines; frequencies in dashed box within).

NOTE: All turbo-jet departures in all directions, maintain 250K until advised by ATC.



NOTE: RADAR required.
NOTE: Chart not to scale.

EC-3, 10 OCT 2019 to 07 NOV 2019

O'HARE FIVE DEPARTURE

(NARRATIVE ON FOLLOWING PAGE)