

WAAS CH 48904 W10A	APP CRS 093°	Rwy Idg TDZE Apt Elev	12246 672 680
----------------------------------------	------------------------	-----------------------------	------------------------------------------

RNAV (GPS) RWY 10L

CHICAGO O'HARE INTL (ORD)

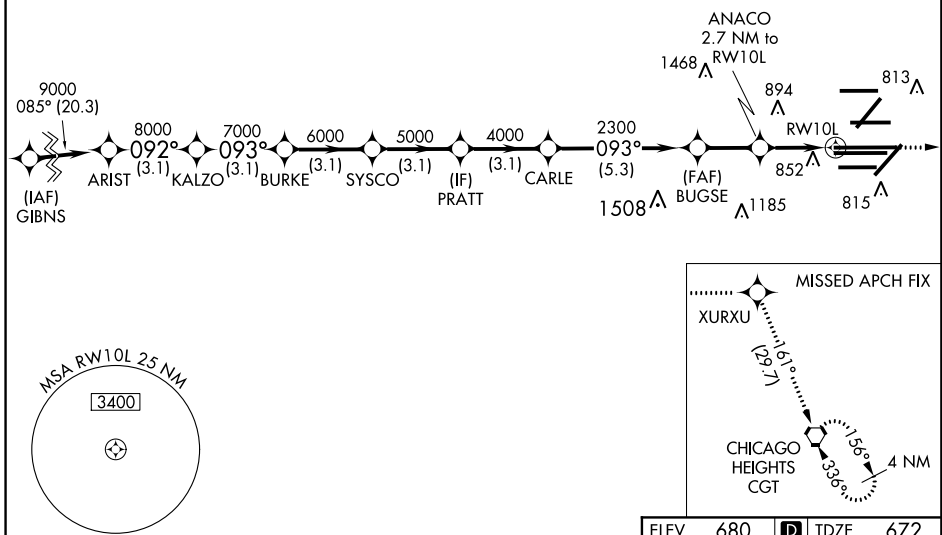
▼ For uncompensated Baro-VNAV systems, LNAV/VNAV NA below -19°C (-2°F) or above 54°C (130°F). DME/DME RNP-0.3 NA. Simultaneous approach authorized. LNAV procedure NA during simultaneous operations. Use of FD or AP providing RNAV track guidance required during simultaneous operations.

ALSF-2
MISSED APPROACH: Climb to 4000 direct XURXU and on track 161° to CGT VORTAC and hold.

D-ATIS 135.4 282.225	CHICAGO APP CON 119.0 292.125	O'HARE TOWERS 128.15 348.0 (Rwy 9L/27R) 133.0 348.0 (10R/28L) 120.75 121.15 126.9 132.7 348.0 (CENTER)				GND CON (TWR NORTH) 124.125 (TWR SOUTH) 118.05 (ALL TWRs) 226.675	(TWR CENTER) (OBND) 121.75 (IBND) 121.9
------------------------------------------	-----------------------------------------	--------------------------------------------------------------------------------------------------------------------------------	--	--	--	-------------------------------------------------------------------------------------------------------	----------------------------------------------------------------

RADAR REQUIRED

CLNC DEL 121.6	CPDLC
--------------------------	-------



EC-3, 10 OCT 2019 to 07 NOV 2019

EC-3, 10 OCT 2019 to 07 NOV 2019

VGSIs and RNAV glidepath not coincident (VGSIs Angle 3.00/TCH 74).		4000	XURXU	tr 161°	CGT
ARIST		KALZO	BURKE	SYSCO	PRATT
9000	8000	7000	6000	5000	4000
GP 3.00°					
TCH 56					
	3.1 NM	3.1 NM	3.1 NM	3.1 NM	5.3 NM
	A	B	C	D	
LPV DA	872/18		200 (200-½)		
LNAV/VNAV DA	1056/40		384 (400-¾)		
LNAV MDA	1120/24	448 (500-½)	1120/45	448 (500-¾)	

