

WAAS CH 99508 W09B	APP CRS 093°	Rwy Idg TDZE Apt Elev	7500 668 680
--	------------------------	-----------------------------	---

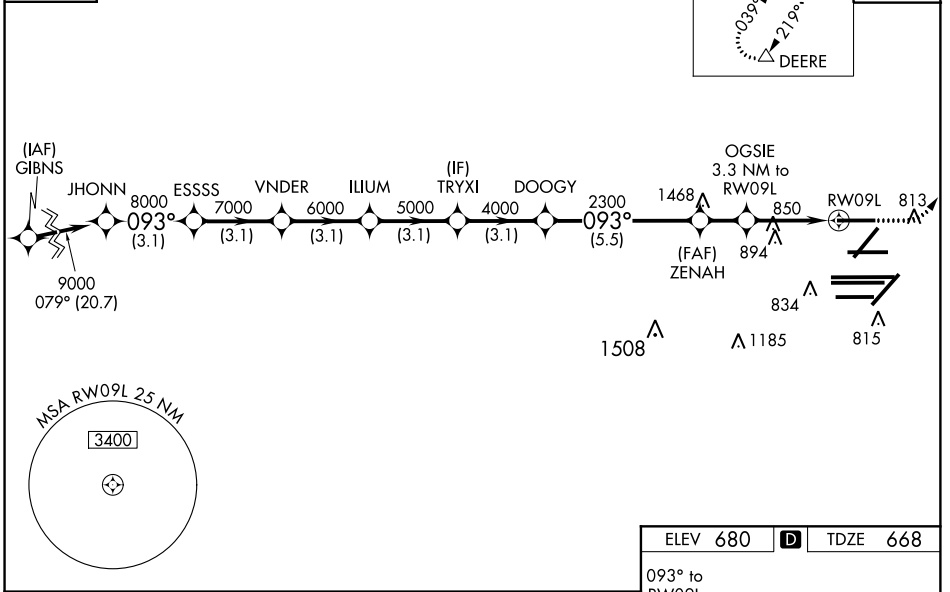
RNAV (GPS) RWY 9L

CHICAGO O'HARE INTL (ORD)

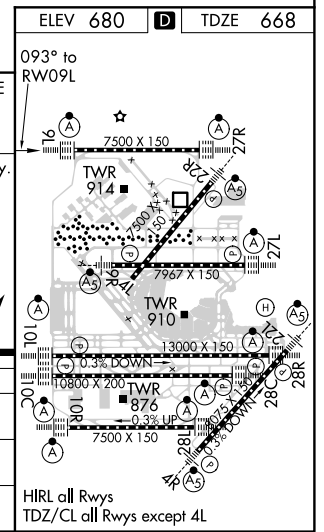
PBN APCH. RADAR required for procedure entry.		ALSIF-2 	MISSED APPROACH: Climb to 1100 then climbing left turn to 4000 direct DEERE and hold.
<p>▼ For uncompensated Baro-VNAV systems, procedure NA below -19°C or above 54°C. Simultaneous approach authorized. LNAV procedure NA during simultaneous operations. Use of FD or AP providing RNAV track guidance required during simultaneous operations. For inop ALS, increase LNAV/VNAV visibility to RVR 5500.</p>			

CHICAGO APP CON	O'HARE TOWERS				GND CON		(TWR CENTER)	CLNC DEL
119.0 292.125	128.15 348.0 (Rwy 9L/27R)	133.0 348.0 (10R/28L)	124.125 (TWR NORTH)	118.05 (TWR SOUTH)	121.75 (OBND)	121.9 (IBND)	121.6	
	120.75 121.15 126.9 132.7 348.0 (CENTER)		226.675 (ALL TWRS)					

D-ATIS 135.4 282.225	MISSED APCH FIX 4 NM 	CPDLC
--	-----------------------------	-------



JHONN	ESSSS	VNDER	ILIUM	TRYXI	ZENAH	OGSIE	RW09L
9000	8000	7000	6000	5000	4000	2300	1760
GP 3.00° TCH 55						3.3 NM to RW09L	1.2 NM to RW09L
3.1 NM	3.1 NM	3.1 NM	3.1 NM	3.1 NM	5.5 NM	1.7 NM	2.1 NM
CATEGORY	A		B		C	D	
LPV DA	868/18		200 (200-½)				
LNAV/VNAV DA	1034/35		366 (400-¾)				
LNAV MDA	1100/24	432 (500-½)		1100/40	432 (500-¾)		



EC-3, 10 OCT 2019 to 07 NOV 2019

EC-3, 10 OCT 2019 to 07 NOV 2019