

WAAS CH <b>78204</b> <b>W09A</b>	APP CRS <b>093°</b>	Rwy ldg <b>7709</b> TDZE <b>660</b> Apt Elev <b>680</b>
--	------------------------	---

# RNAV (GPS) RWY 9R

CHICAGO O'HARE INTL (ORD)

**▽** For uncompensated Baro-VNAV systems, LNAV/VNAV NA below -19°C (-2°F) or above 54°C (130°F). Simultaneous approach authorized. DME/DME RNP-0.3 NA. LNAV procedure NA during simultaneous operations. Use of FD or AP providing RNAV track guidance required during simultaneous operations. For inop MALS, increase LNAV Cat C/D visibility to 1½ mile.

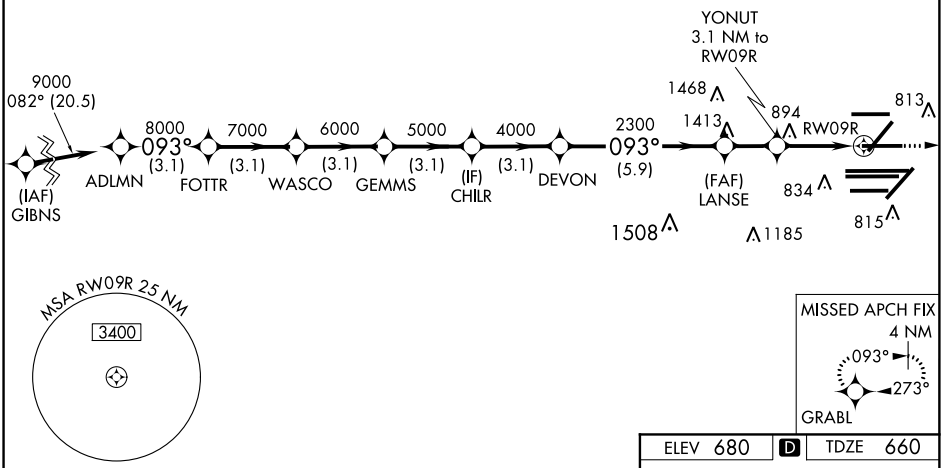


**MISSED APPROACH:**  
Climb to 4000 direct GRABL and hold.

D-ATIS <b>135.4</b> <b>282.225</b>	CHICAGO APP CON <b>119.0 292.125</b>	O'HARE TOWERS <b>128.15 348.0</b> (Rwy 9L/27R) <b>133.0 348.0</b> (10R/28L) <b>120.75 121.15 126.9 132.7 348.0</b> (CENTER)	GND CON (TWR CENTER) <b>124.125</b> (TWR NORTH) <b>118.05</b> (TWR SOUTH) <b>226.675</b> (ALL TWRs)	<b>121.75</b> (OBND) <b>121.9</b> (IBND)
--	---	--	--	---

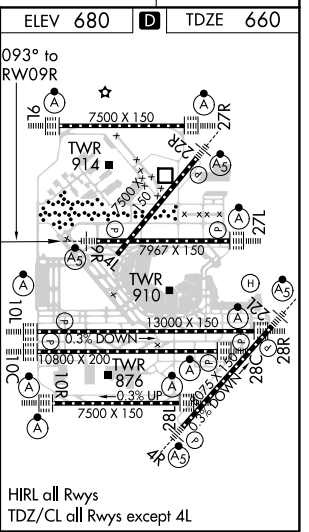
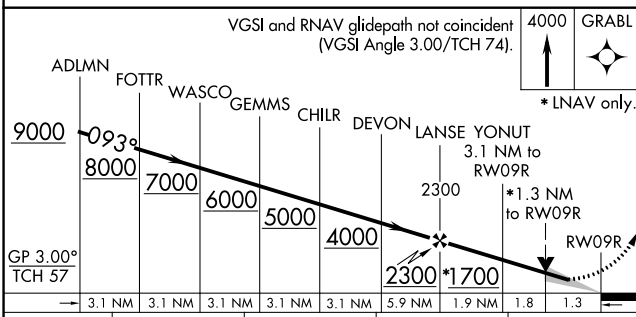
## RADAR REQUIRED

CLNC DEL <b>121.6</b>	CPDLC
--------------------------	-------



EC-3, 10 OCT 2019 to 07 NOV 2019

EC-3, 10 OCT 2019 to 07 NOV 2019



GP 3.00° TCH 57	3.1 NM	3.1 NM	3.1 NM	3.1 NM	3.1 NM	5.9 NM	1.9 NM	1.8	1.3
CATEGORY	A		B		C		D		
LPV DA	860/18		200 (200-½)						
LNAV/VNAV DA	1047/40		387 (400-¾)						
LNAV MDA	1160/24		500 (500-½)		1160/50		500 (500-1)		