

# RNAV (GPS) PRM Y RWY 10R

(CLOSE PARALLEL)

CHICAGO O'HARE INTL (ORD)

|  |                        |                             |   |
|--|------------------------|-----------------------------|---|
| WAAS<br>CH <b>77937</b><br><b>W10D</b> | APP CRS<br><b>090°</b> | Rwy Idg<br>TDZE<br>Apt Elev | <b>7500</b><br><b>680</b><br><b>680</b> |
|--|------------------------|-----------------------------|---|

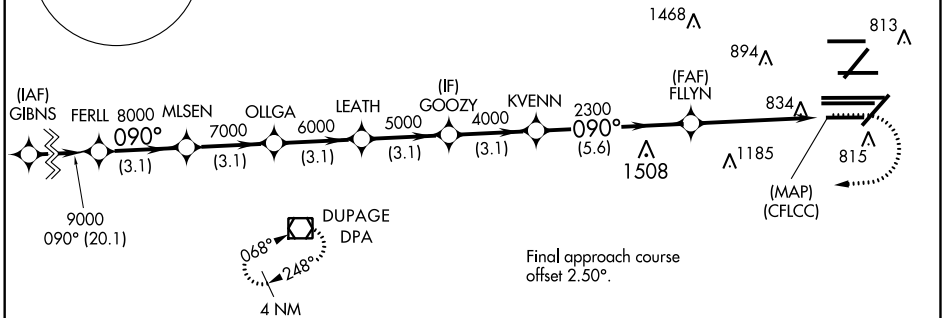
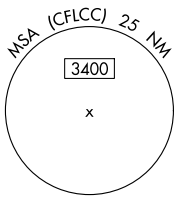
**⚠** DME/DME RNP-0.3 NA. Simultaneous approach authorized. Dual VHF comm required. See additional requirements on AAUP. For uncompensated Baro-VNAV systems, LNAV/VNAV NA below -19°C (-2°F) or above 54°C (130°F). Use of FD or AP providing RNAV track guidance required during simultaneous operations. Inop table does not apply to LPV all Cats. Rwy 10R helicopter visibility reduction below 3/4 SM NA.

ALSF-2

MISSED APPROACH: Climb to 1200 then climbing right turn to 4000 direct DPA VOR/DME and hold.

|  |   |  |   |
|--|---|--|---|
| D-ATIS<br><b>135.4</b><br><b>282.225</b> | CHICAGO APP CON<br><b>119.0 292.125</b> | O'HARE TOWERS<br><b>128.15 348.0</b> (Rwy 9L/27R) <b>133.0 348.0</b> (10R/28L) <b>120.75 121.15 126.9 132.7 348.0</b> (CENTER) <b>PRM 128.05</b> | GND CON (TWR CENTER) <b>124.125</b> (TWR NORTH) <b>121.75</b> (OBND) (TWR SOUTH) <b>121.9</b> (IBND) <b>226.675</b> (ALL TWR) |
|--|---|--|---|

|                          |       |
|--------------------------|-------|
| CLNC DEL<br><b>121.6</b> | CPDLC |
|--------------------------|-------|

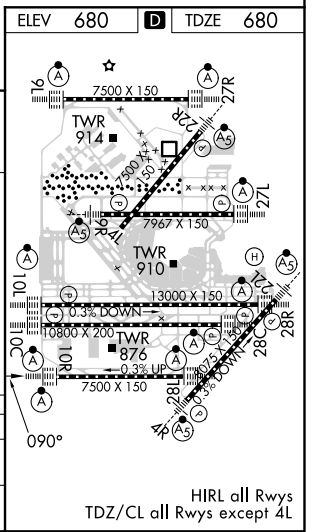


EC-3, 10 OCT 2019 to 07 NOV 2019

EC-3, 10 OCT 2019 to 07 NOV 2019

## RADAR REQUIRED

|           |        |        |            |        |                 |        |         |
|-----------|--------|--------|------------|--------|-----------------|--------|---------|
|           |        | 1200   | 4000       | DPA    |                 |        |         |
|           |        |        |            |        |                 |        |         |
| FERLL     | MLSEN  | OLLGA  | LEATH      | GOOZY  | KVENN           | FLYN   | (CFLCC) |
| 9000      | 8000   | 7000   | 6000       | 5000   | 4000            | 2300   |         |
| GP 3.00   |        |        |            |        |                 |        |         |
| TCH 55    |        |        |            |        |                 |        |         |
|           | 3.1 NM | 3.1 NM | 3.1 NM     | 3.1 NM | 3.1 NM          | 5.6 NM | 4.9 NM  |
| CATEGORY  | A      |        | B          |        | C               |        | D       |
| LPV       | DA     |        | 930-3/4    |        | 250 (300-3/4)   |        |         |
| LNAV/VNAV | DA     |        | 1157-1 1/8 |        | 477 (500-1 1/8) |        |         |



# RNAV (GPS) PRM Y RWY 10R (CLOSE PARALLEL)