

WAAS CH <b>77937</b> <b>W10D</b>	APP CRS <b>090°</b>	Rwy Idg TDZE Apt Elev	<b>7500</b> <b>680</b> <b>680</b>
--	------------------------	-----------------------------	---

# RNAV (GPS) Y RWY 10R

CHICAGO O'HARE INTL (ORD)

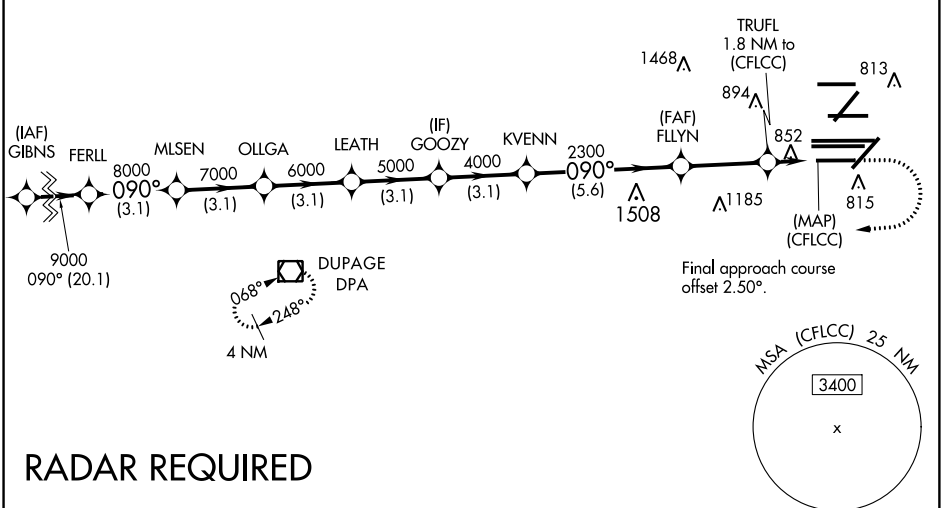
**▼** DME/DME RNP-0.3 NA. Simultaneous approach authorized. For uncompensated Baro-VNAV systems, LNAV/VNAV NA below -19°C (-2°F) or above 54°C (130°F). LNAV procedure NA during simultaneous operations. Use of FD or AP providing RNAV track guidance required during simultaneous operations. Inop table does not apply to LPV all Cats. For inop ALS, increase LNAV Cat A and B visibility to 1 SM. Rwy 10R helicopter visibility reduction below ¾ SM NA.

ALSF-2

MISSED APPROACH: Climb to 1200 then climbing right turn to 4000 direct DPA VOR/DME and hold.

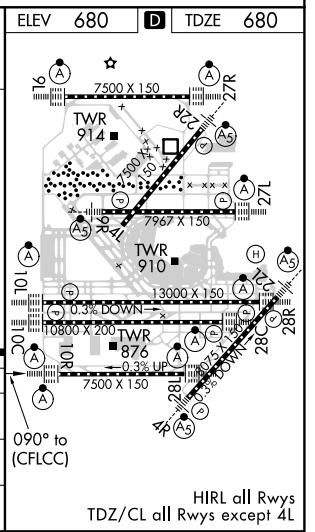
D-ATIS <b>135.4</b> <b>282.225</b>	CHICAGO APP CON <b>119.0 292.125</b>	O'HARE TOWERS <b>128.15 348.0</b> (Rwy 9L/27R) <b>133.0 348.0</b> (10R/28L) <b>120.75 121.15 126.9 132.7 348.0</b> (CENTER)				GND CON (TWR NORTH) <b>121.75</b> (TWR SOUTH) <b>118.05</b> (ALL TWRs) <b>226.675</b>	(TWR CENTER) <b>121.75</b> (IBND) <b>121.9</b> (IBND)
--	---	--	--	--	--	---	---

CLNC DEL <b>121.6</b>	CPDLC
--------------------------	-------



**RADAR REQUIRED**

	1200	4000	DPA					
	*LNAV only.							
GP 3.00 TCH 55	9000	8000	7000	6000	5000	4000	2300	*1300
	3.1 NM	3.1 NM	3.1 NM	3.1 NM	3.1 NM	5.6 NM	3.1 NM	0.6
CATEGORY	A		B		C		D	
LPV DA	930-¾		250 (300-¾)					
LNAV/VNAV DA	1157-1½		477 (500-1½)					
LNAV MDA	1120-¾		440 (500-¾)					



EC-3, 10 OCT 2019 to 07 NOV 2019

EC-3, 10 OCT 2019 to 07 NOV 2019