

WAAS CH <b>77804</b> <b>W27A</b>	APP CRS <b>273°</b>	Rwy Idg TDZE Apt Elev	<b>7782</b> <b>654</b> <b>680</b>
--	------------------------	-----------------------------	---

# RNAV (GPS) Z RWY 27L

CHICAGO O'HARE INTL (ORD)

**▼** For uncompensated Baro-VNAV systems, LNAV/VNAV NA below -19°C (-2°F) or above 54°C (130°F). Simultaneous approach authorized. DME/DME RNP-0.3 NA. LNAV procedure NA during simultaneous operations. Use of FD or AP providing RNAV track guidance required during simultaneous operations. For inop ALSF-2, increase LNAV Cat C/D visibility to 1½ mile.

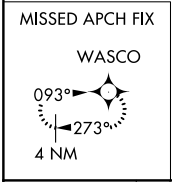
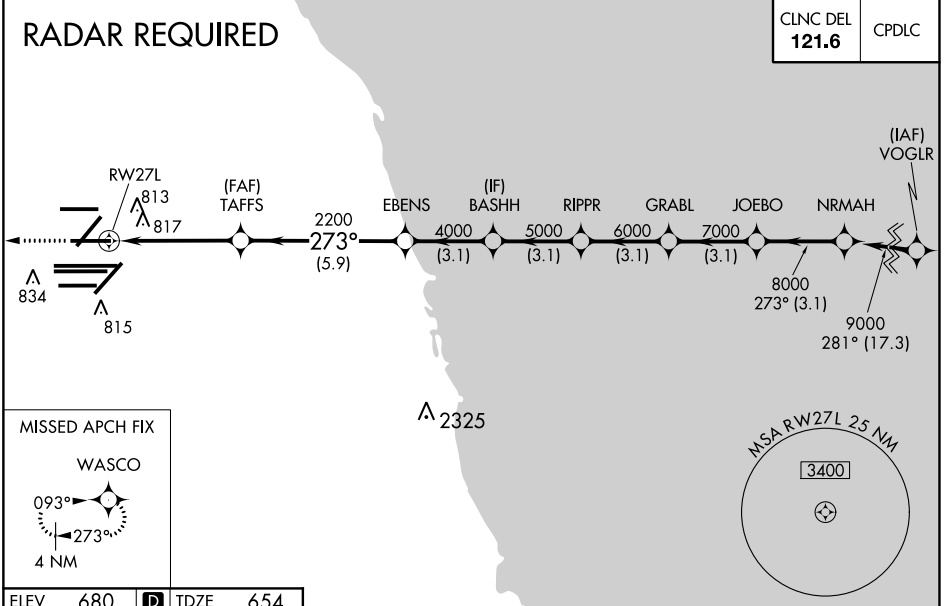


**MISSED APPROACH:**  
Climb to 4000 direct WASCO and hold.

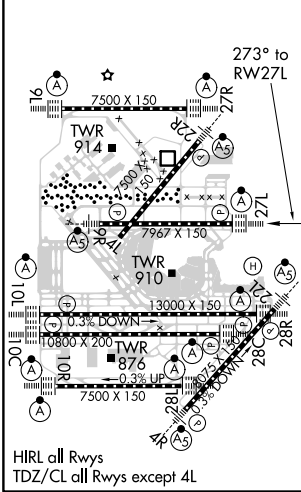
D-ATIS <b>135.4</b>	CHICAGO APP CON <b>119.0 292-125</b>	O'HARE TOWERS <b>128.15 348.0</b> (Rwy 9L/27R) <b>133.0 348.0</b> (10R/28L) <b>120.75 121.15 126.9 132.7 348.0</b> (CENTER)	GND CON (TWR NORTH) <b>124.125</b> (TWR SOUTH) <b>118.05</b> (ALL TWSRS) <b>226.675</b>	(TWR CENTER) <b>121.75</b> (OBND) (IBND) <b>121.9</b>
------------------------	---	--	---	--

## RADAR REQUIRED

CLNC DEL <b>121.6</b>	CPDLC
--------------------------	-------



ELEV 680	<b>D</b>	TDZE 654
----------	----------	----------



4000	WASCO	VGSI and RNAV glidepath not coincident (VGSI Angle 3.00/TCH 67).					
*LNAV only.							
	TAFSS	EBENS	BASHH	RIPPR	GRABL	JOEBO	NRMAH
	2200	4000	5000	6000	7000	8000	9000
	1.3	3.4	5.9	3.1	3.1	3.1	3.1
CATEGORY	A	B	C	D			
LPV DA	854/18		200 (200-½)				
LNAV/VNAV DA	1125/60		471 (500-1¼)				
LNAV MDA	1120/24	466 (500-½)		1120/50	466 (500-1)		

EC-3, 10 OCT 2019 to 07 NOV 2019

EC-3, 10 OCT 2019 to 07 NOV 2019