

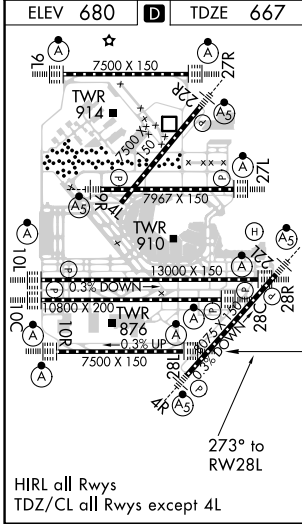
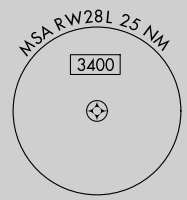
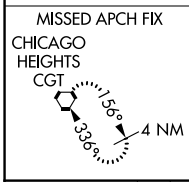
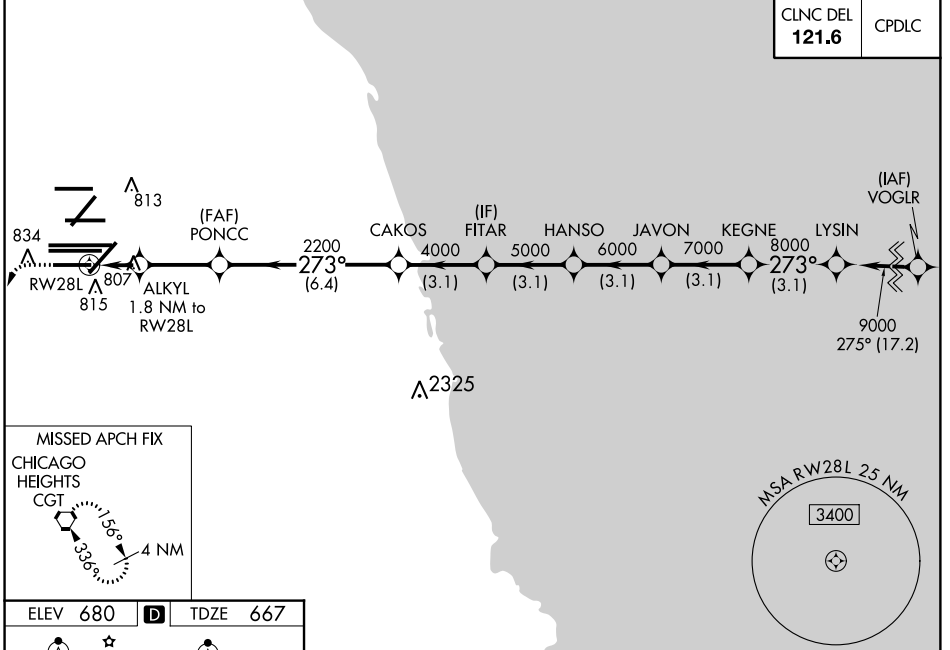
WAAS CH 65837 W28D	APP CRS 273°	Rwy Idg TDZE Apt Elev	7500 667 680
--	------------------------	-----------------------------	---

RNAV (GPS) Z RWY 28L

CHICAGO O'HARE INTL (ORD)

RNP APCH.		ALSF-2		MISSED APPROACH: Climb 1200 then climbing left turn to 4000 direct CGT VORTAC and hold.	
▽ Simultaneous approach authorized. LNAV procedure NA during simultaneous operations. For uncompensated Baro-VNAV systems, LNAV/VNAV NA below -19C or above 54C. Use of FD or AP required during simultaneous operations.		O'HARE TOWERS 128.15 348.0 (Rwy 9L/27R) 133.0 348.0 (10R/28L)		GND CON (TWR CENTER) 124.125 (TWR NORTH) 121.75 (OBND) 118.05 (TWR SOUTH) 121.9 (IBND) 226.675 (ALL TWRs)	
D-ATIS 135.4	CHICAGO APP CON 119.0 292.125				

CLNC DEL 121.6	CPDLC
--------------------------	-------



ELEV 680	TDZE 667
1200 4000 CGT *LNAV only. ALKYL 1.8 NM to RW28L *1.1 NM to RW28L RW28L *1280 2200 CATEGORIES: A, B, C, D LPV DA: 867/18, 200 (200-1/2) LNAV/VNAV DA: 1090/40, 423 (500-3/4) LNAV MDA: 1060/24, 393 (400-1/2), 1060/35, 393 (400-5/8)	

EC-3, 10 OCT 2019 to 07 NOV 2019

EC-3, 10 OCT 2019 to 07 NOV 2019