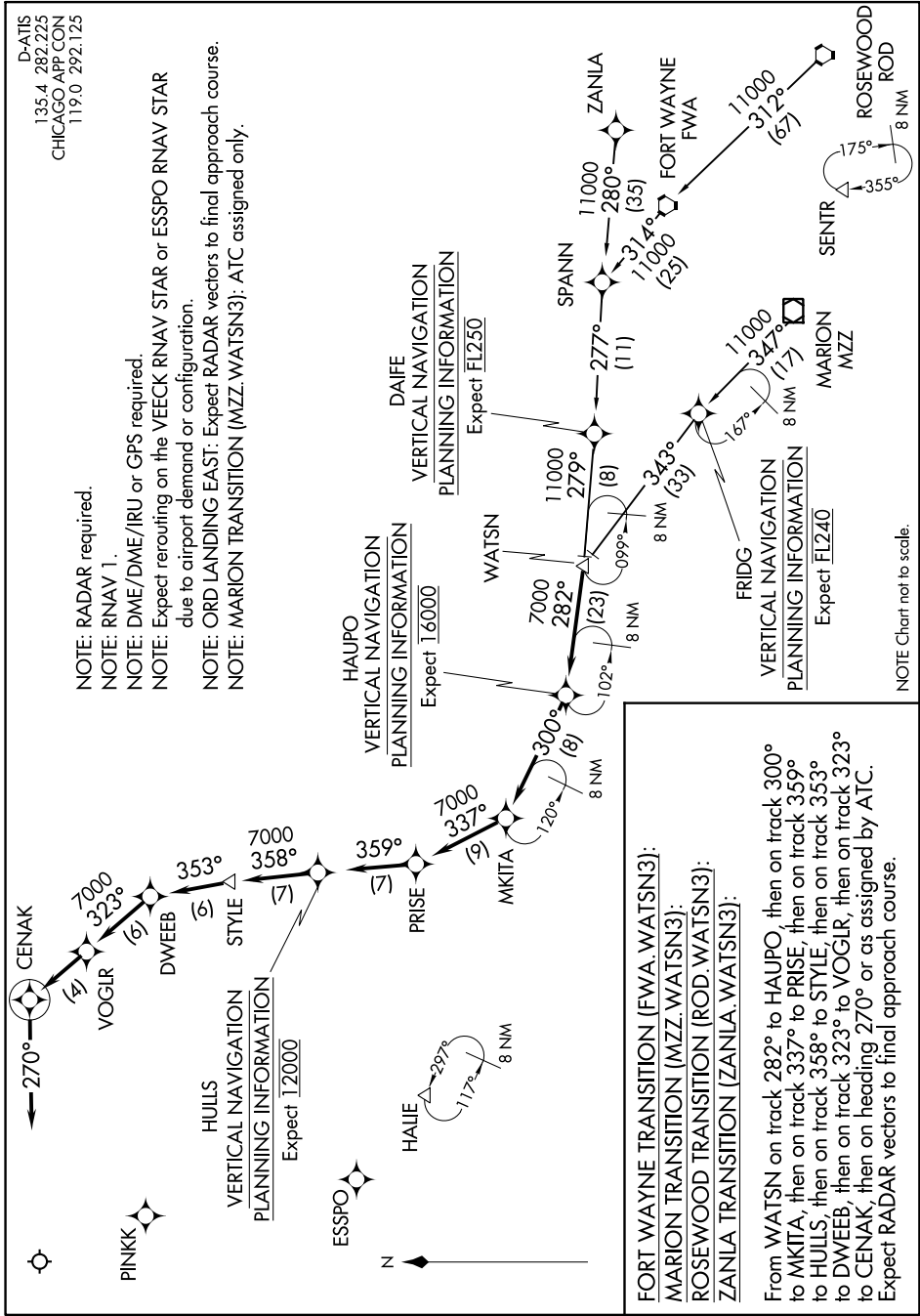


WATSN THREE ARRIVAL (RNAV)

D-ATIS
135.4 282.225
CHICAGO APP CON
119.0 292.125

- NOTE: RADAR required.
- NOTE: RNAV 1.
- NOTE: DME/DME/IRU or GPS required.
- NOTE: Expect rerouting on the VEECK RNAV STAR or ESSPO RNAV STAR due to airport demand or configuration.
- NOTE: ORD LANDING EAST: Expect RADAR vectors to final approach course.
- NOTE: MARION TRANSITION (MZZ.WATSN3): ATC assigned only.



FORT WAYNE TRANSITION (FWA.WATSN3):
MARION TRANSITION (MZZ.WATSN3):
ROSEWOOD TRANSITION (ROD.WATSN3):
ZANLIA TRANSITION (ZANLIA.WATSN3):

From WATSN on track 282° to HAUPO, then on track 300° to MKITA, then on track 337° to PRISE, then on track 359° to HUILL, then on track 358° to STYLE, then on track 353° to DWEEEB, then on track 323° to VOGILR, then on track 323° to CENAK, then on heading 270° or as assigned by ATC. Expect RADAR vectors to final approach course.

NOTE: Chart not to scale.

WATSN THREE ARRIVAL (RNAV)