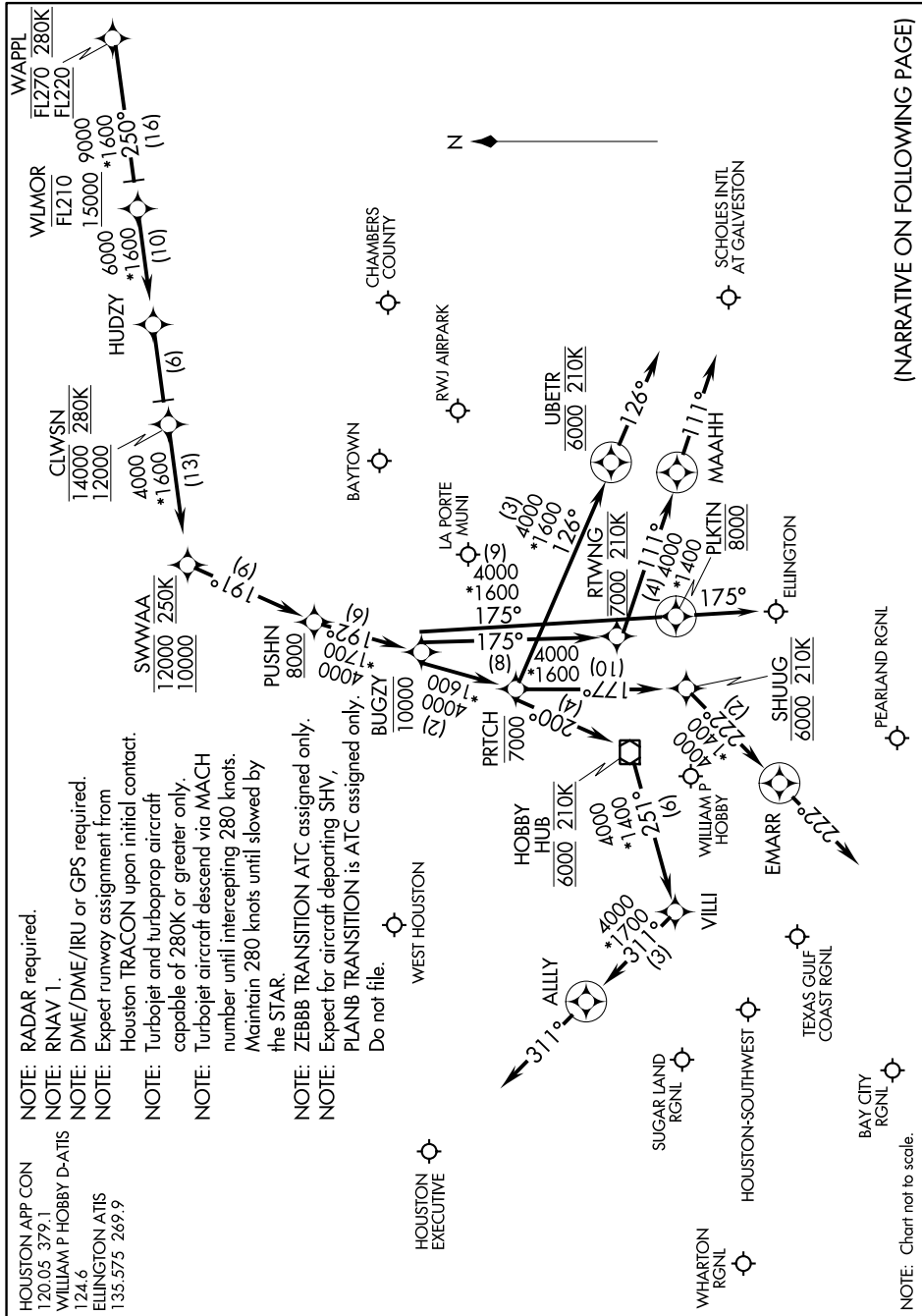


WAPPL FOUR ARRIVAL (RNAV) Arrival Routes

SC-5, 10 OCT 2019 to 07 NOV 2019



- NOTE: RADAR required.
- NOTE: RNAV 1.
- NOTE: DME/DME/IRU or GPS required.
- NOTE: Expect runway assignment from Houston TRACON upon initial contact.
- NOTE: Turbojet and turboprop aircraft capable of 280K or greater only.
- NOTE: Turbojet aircraft descend via MACH number until intercepting 280 knots. Maintain 280 knots until slowed by the STAR.
- NOTE: ZEBBB TRANSITION ATC assigned only.
- NOTE: Expect for aircraft departing SHV, PLANB TRANSITION is ATC assigned only. Do not file.

(NARRATIVE ON FOLLOWING PAGE)

SC-5, 10 OCT 2019 to 07 NOV 2019

WAPPL FOUR ARRIVAL (RNAV) Arrival Routes

NOTE: Chart not to scale.