

(DIRBY.DIRBY1) 17173

DIRBY ONE ARRIVAL (RNAV)

LOS ANGELES INTL (LAX)
LOS ANGELES, CALIFORNIA

AL-237 (FAA)

SW-3, 10 OCT 2019 to 07 NOV 2019

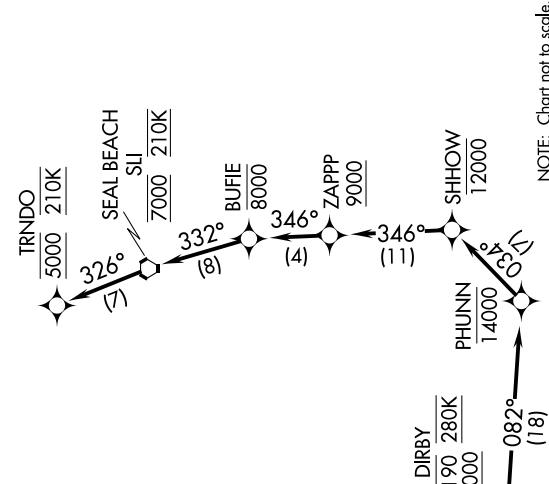
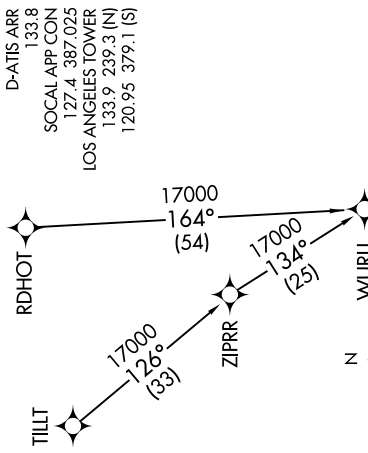
ARRIVAL ROUTE DESCRIPTION

RDHOT TRANSITION (RDHOT.DIRBY1)
TILLT TRANSITION (TILLT.DIRBY1)

From DIRBY on track 082° to cross PHUNN at or below 14000, then on track 034° to cross SHHOW at or below 12000, then on track 346° to cross ZAPPP at or above 9000, then on track 346° to cross BUFILE at or below 8000, then on track 332° to cross SIJ VORTAC at 7000 and at 210K, then on track 326° to cross TRNDO at 5000 and at 210K. Expect RADAR vectors to ILS or RNAV (RNP) Z RWY 25L final approach course.

LOST COMMUNICATIONS

In the event of lost communications: RNP arrivals proceed on the RNAV (RNP) Z RWY 25L approach. All other aircraft proceed on the ILS or LOC RWY 25L.



NOTE: RADAR required.
 NOTE: RNAV 1.
 NOTE: DME/DME/IRU or GPS required.
 NOTE: Turbojet aircraft only.
 NOTE: ATC assigned only, do not file.
 NOTE: Expect runway 25L unless otherwise assigned by ATC.
 NOTE: Non RNP AR aircraft expect RADAR vector to final approach course after SIJ VORTAC.

NOTE: Chart not to scale.

DIRBY ONE ARRIVAL (RNAV)

(DIRBY.DIRBY1) 22JUN17

LOS ANGELES, CALIFORNIA
LOS ANGELES INTL (LAX)

SW-3, 10 OCT 2019 to 07 NOV 2019