

# DOTSS TWO DEPARTURE (RNAV)

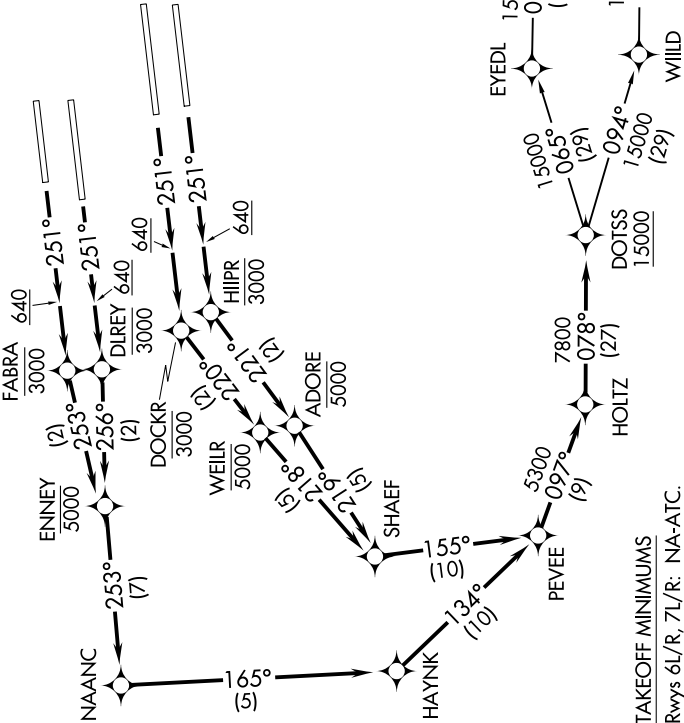
AL-237 (FAA)

LOS ANGELES INTL (LAX)  
LOS ANGELES, CALIFORNIA

610Z MON 01 1610Z 2019 to 07 NOV 2019

**TOP ALTITUDE:  
17000**

D-ATIS DEP 135.65  
 CLNC DEL 120.35 327.0  
 CPDLC  
 GND CON (N) 121.65 327.0  
 (S) 121.75 327.0  
 (W) 121.4 327.0  
 LOS ANGELES TOWER (N) 133.9 239.3  
 (S) 120.95 379.1  
 SOCIAL DEP CON 124.3 363.2 (045°-224°)  
 125.2 263.025 (225°-044°)



**TAKEOFF MINIMUMS**

Rwys 6L/R, 7L/R: NA-ATC.  
 Rwys 24L/R, 25L/R: Standard with minimum climb of 500' per NM to 640.

- NOTE: DME/DME/IRU or GPS required.
- NOTE: RADAR required.
- NOTE: RNAV 1.
- NOTE: Turbojet aircraft only.
- NOTE: Turn at HIIPR and DOCKR are required for ATC separation.

NOTE: Chart not to scale.

(NARRATIVE ON FOLLOWING PAGE)

# DOTSS TWO DEPARTURE (RNAV)