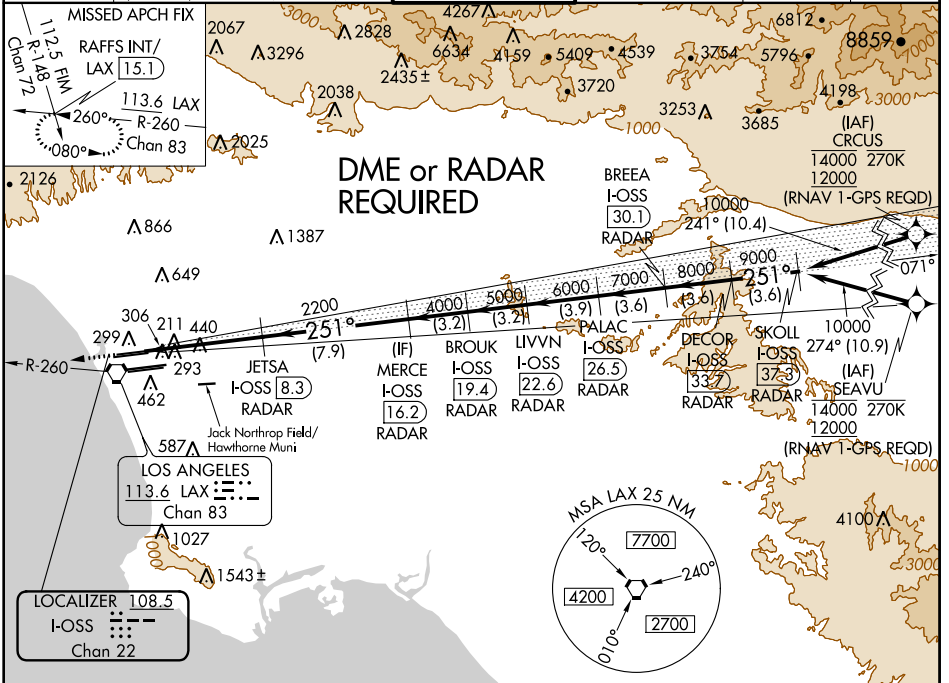


LOC/DME I-OSS <b>108.5</b> Chan 22	APP CRS <b>251°</b>	Rwy Idg TDZE Apt Elev	<b>8925</b> <b>122</b> <b>128</b>
--	------------------------	-----------------------------	---

# ILS RWY 24R (CAT II & III)

LOS ANGELES INTL (LAX)

D-ATIS ARR <b>133.8</b> DEP <b>135.65</b>	SOCAL APP CON (APCH FM WEST) <b>124.3 363.2</b> <b>124.5 235.975</b> (225°-044°)	LOS ANGELES TOWER <b>N 133.9 239.3</b> <b>S 120.95 379.1</b>	GND CON <b>N 121.65 327.0</b> <b>S 121.75 327.0</b> <b>W 121.4 327.0</b>	CLNC DEL <b>120.35</b> <b>327.0</b>	CPDLC



SW-3, 10 OCT 2019 to 07 NOV 2019

SW-3, 10 OCT 2019 to 07 NOV 2019

ELEV 128	TDZE 122	2000	LAX R-260	RAFFS INT	VGSI and ILS glidepath not coincident (VGSI Angle 3.00/TCH 73).	SKOLL I-OSS 37.3				
		hdg 251°								
		1025'	6.4 NM	7.9 NM	3.2 NM	3.2 NM	3.9 NM	3.6 NM	3.6 NM	3.6 NM
S-ILS 24R		CAT II RA 118/12 100 DA 222								
S-ILS 24R		CAT III RVR 06								
<b>CATEGORY II &amp; III ILS - SPECIAL AIRCREW &amp; AIRCRAFT CERTIFICATION REQUIRED</b>										

LOS ANGELES, CALIFORNIA  
Amdt 26 12OCT17

33°57'N-118°24'W

## LOS ANGELES INTL (LAX) ILS RWY 24R (CAT II & III)