

LOC/DME I-LAX <b>109.9</b> Chan 36	APP CRS <b>251°</b>	Rwy Idg <b>11095</b> TDZE <b>104</b> Apt Elev <b>128</b>
--	------------------------	--

# ILS RWY 25L (CAT II & III)

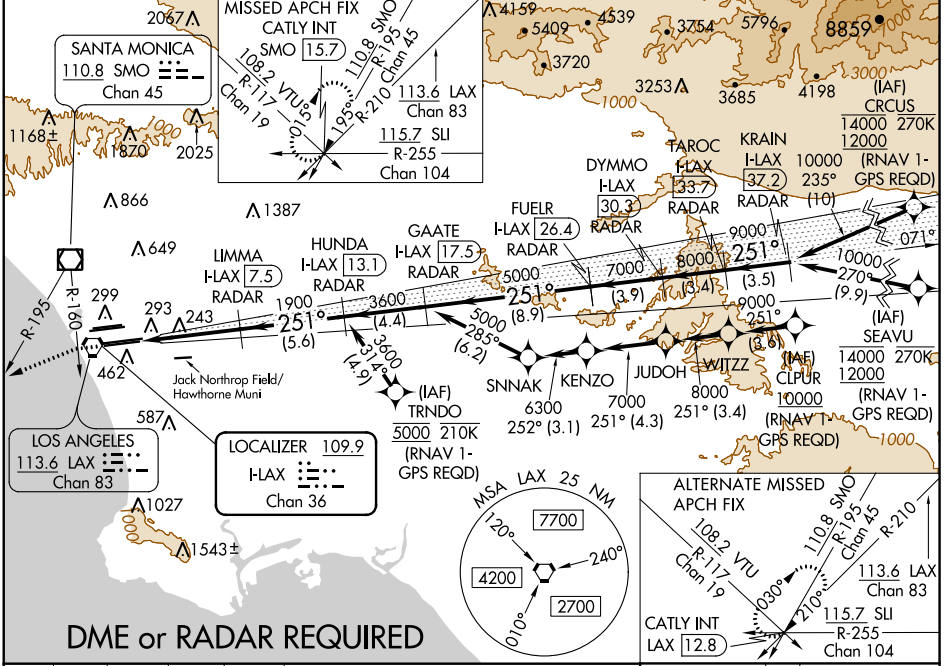
LOS ANGELES INTL (LAX)

**▽** DME or RADAR required.  
Simultaneous approach authorized.  
Simultaneous approach authorized with HHR.



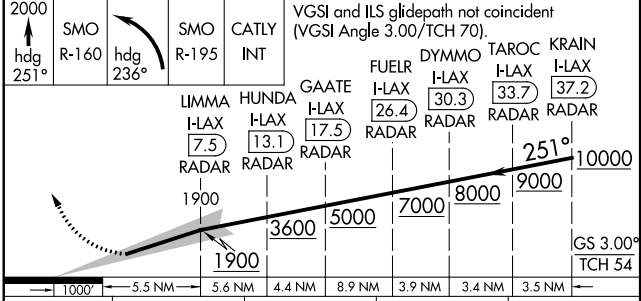
**MISSED APPROACH:** Climb to 2000 on heading 251° until crossing the SMO R-160 then left turn on heading 236° and on the SMO R-195 to CATLY INT/SMO 15.7 DME and hold.

D-ATIS ARR <b>133.8</b> DEP <b>135.65</b>	SOCAL APP CON <b>124.3 363.2</b> (APCH FM WEST) <b>124.5 235.975</b> (225°-044°)	<b>124.9 269.0</b> (090°-224°) <b>128.5 360.7</b> (045°-089°)	LOS ANGELES TOWER <b>N 133.9 239.3</b> <b>S 120.95 379.1</b>	GND CON <b>N 121.65 327.0</b> <b>S 121.75 327.0</b> <b>W 121.4 327.0</b>	CLNC DEL <b>120.35</b> <b>120.35</b> <b>327.0</b>	CPDLC
---	--	--	--	---	--	-------



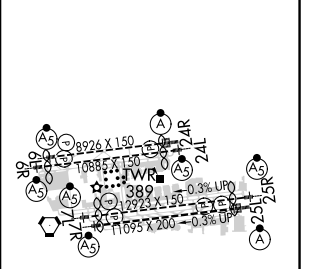
SW-3, 10 OCT 2019 to 07 NOV 2019

SW-3, 10 OCT 2019 to 07 NOV 2019



ELEV 128	<b>D</b>	TDZE 104
----------	----------	----------

CATEGORY	A	B	C	D
S-ILS 25L	CAT II RA 107/12 100 DA 204			
S-ILS 25L	CAT III RVR 06			



## CATEGORY II & III ILS - SPECIAL AIRCREW & AIRCRAFT CERTIFICATION REQUIRED

TDZ/CL Rwyrs 6r, 7L, 24R, and 25L  
HIRL all Rwyrs