

# OSHNN EIGHT DEPARTURE (RNAV)

AL-237 (FAA)

LOS ANGELES INTL (LAX)  
LOS ANGELES, CALIFORNIA

SW-3, 10 OCT 2019 to 07 NOV 2019

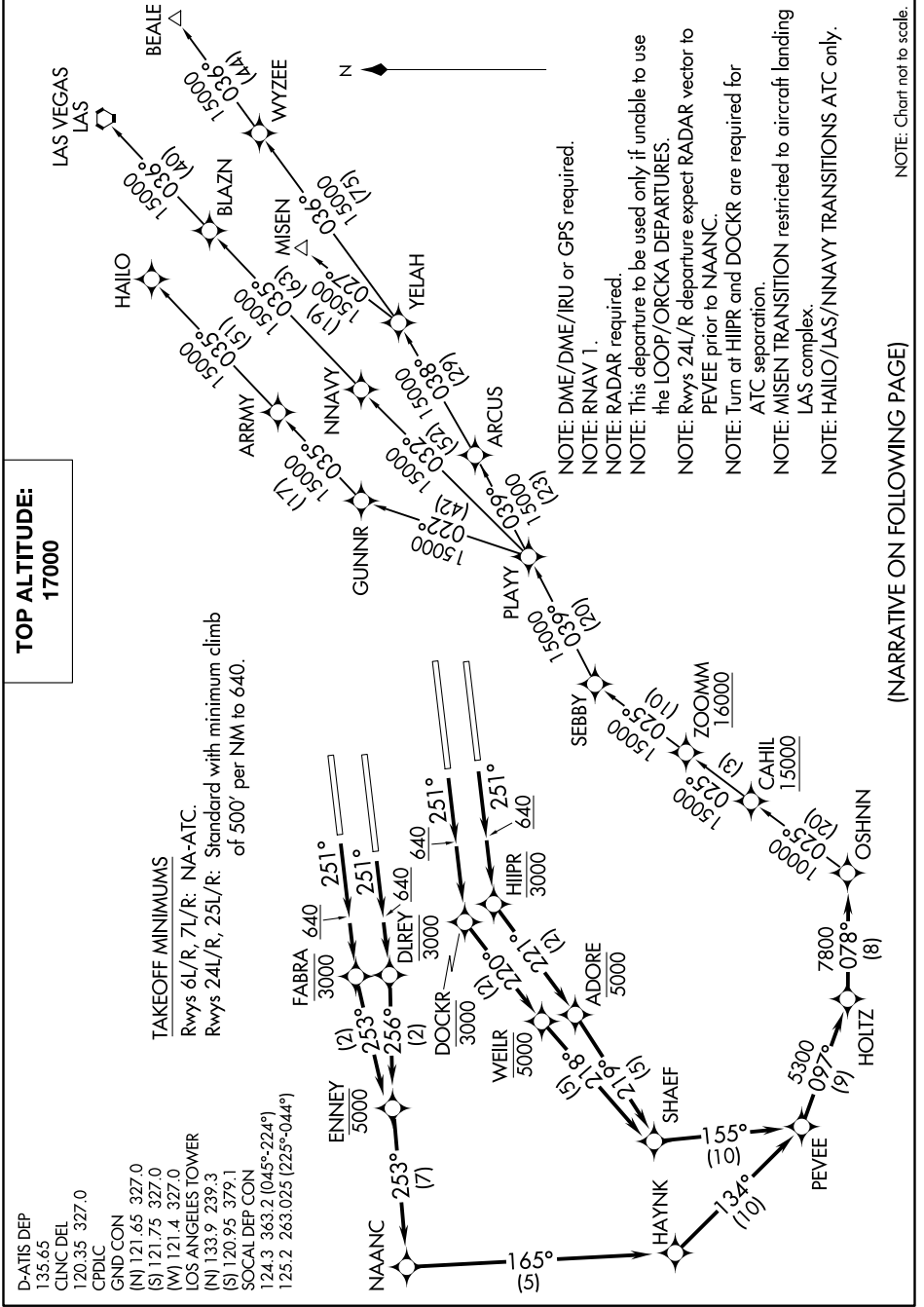
**TOP ALTITUDE:  
17000**

### TAKEOFF MINIMUMS

Rwys 6L/R, 7L/R: NA-ATC.

Rwys 24L/R, 25L/R: Standard with minimum climb of 500' per NM to 640.

- D-ATIS DEP 135.65
- CINC DEL 120.35 327.0
- CPDLC 120.35 327.0
- GND CON (N) 121.65 327.0
- (S) 121.75 327.0
- (W) 121.4 327.0
- LOS ANGELES TOWER (N) 133.9 329.3
- (S) 120.95 329.1
- SOCAL DEP CON 124.3 363.2 (045°-224°)
- 125.2 263.025 (225°-044°)



- NOTE: DME/DME/IRU or GPS required.
- NOTE: RNAV 1.
- NOTE: RADAR required.
- NOTE: This departure to be used only if unable to use the LOOP/ORCKA DEPARTURES.
- NOTE: Rwys 24L/R departure expect RADAR vector to PEVEE prior to NAAANC.
- NOTE: Turn at HJPR and DOCKR are required for ATC separation.
- NOTE: MISEN TRANSITION restricted to aircraft landing LAS complex.
- NOTE: HAILO/LAS/NNNAVY TRANSITIONS ATC only.

(NARRATIVE ON FOLLOWING PAGE)

NOTE: Chart not to scale.

# OSHNN EIGHT DEPARTURE (RNAV)

LOS ANGELES, CALIFORNIA  
LOS ANGELES INTL (LAX)

SW-3, 10 OCT 2019 to 07 NOV 2019