

APP CRS	Rwy Idg	<b>11095</b>
<b>251°</b>	TDZE	<b>104</b>
	Apt Elev	<b>128</b>

# RNAV (RNP) Z RWY 25L

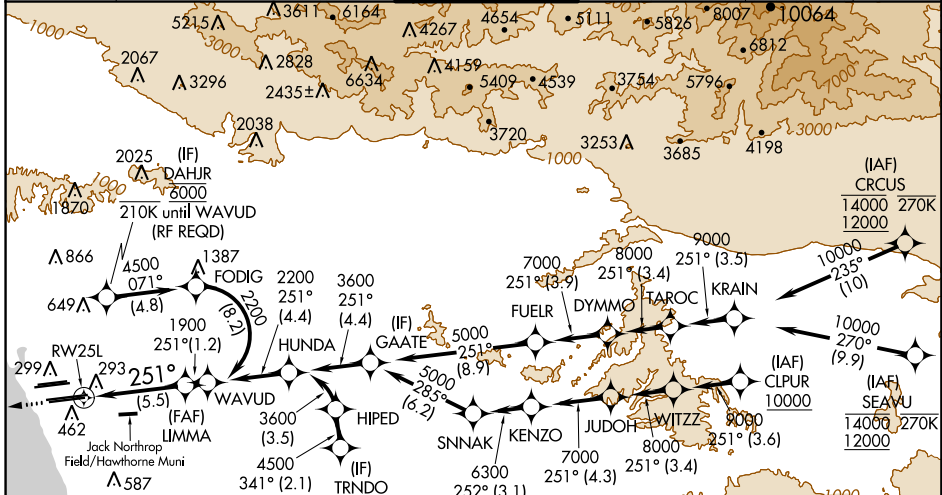
LOS ANGELES INTL (LAX)

For uncompensated Baro-VNAV systems, procedure NA below 5°C (41°F) or above 54°C (130°F).  
GPS required. Simultaneous approach authorized.  
Simultaneous approach authorized with HHR.

ALSF-2

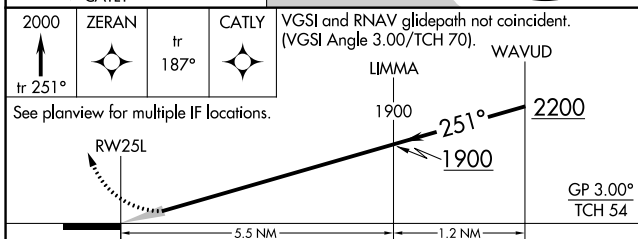
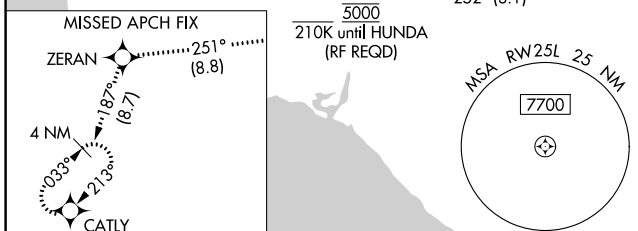
MISSED APPROACH: Climb to 2000 on track 251° to ZERAN and on track 187° to CATLY and hold.

D-ATIS	SOCL APP CON	LOS ANGELES TOWER	GND CON	CLNC DEL	CPDLC
ARR <b>133.8</b>	<b>124.3 363.2</b> (APCH FM WEST)	<b>N 133.9 239.3</b>	<b>N 121.65 327.0</b>	<b>120.35</b>	
DEP <b>135.65</b>	<b>124.5 235.975</b> (225°-044°)	<b>S 120.95 379.1</b> (045°-089°)	<b>S 121.75 327.0</b>	<b>327.0</b>	



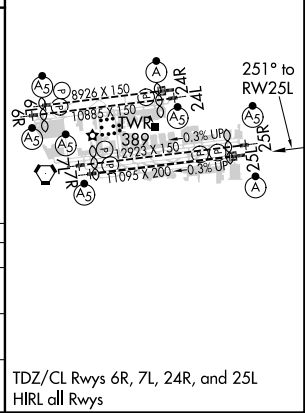
SW-3, 10 OCT 2019 to 07 NOV 2019

SW-3, 10 OCT 2019 to 07 NOV 2019



CATEGORY	A	B	C	D
RNP 0.15 DA		445/30	341 (400- $\frac{5}{8}$ )	
RNP 0.30 DA		543/50	439 (500-1)	
<b>AUTHORIZATION REQUIRED</b>				

ELEV 128	<b>D</b>	TDZE 104
----------	----------	----------



TDZ/CL Rwws 6R, 7L, 24R, and 25L  
HIRL all Rwws